



**National Institute for Health Development  
of Estonia,  
Department of Health Statistics**

**Health Statistics and Medical Technologies  
State Agency of Latvia,  
Health Statistics Department**

**Lithuanian Health Information Centre**

***Health in the Baltic Countries  
2007***

***16-th edition***

2008

## Health in the Baltic countries

---

National Institute for Health Development,  
Hiiu 42, 11619 Tallinn, Estonia  
Phone: 372-6593900,  
Fax: 372-6593901,  
E-mail: [tai@tai.ee](mailto:tai@tai.ee)  
Website: <http://www.tai.ee>  
M.Jesse, director

Health Statistics and Medical Technologies State Agency,  
Duntes 12/22, Riga LV 1005, Latvia  
Phone: 371-67501590  
Fax: 371-67501591  
E-mail: [agentura@vsmtva.gov.lv](mailto:agentura@vsmtva.gov.lv)  
Website: <http://www.vsmtva.gov.lv>  
E. Lavendelis, director

Lithuanian Health Information Centre,  
Kalvariju 153, LT 08221, Vilnius, Lithuania  
Phone: 370-5-2773301  
Fax: 370-5-2773302  
E-mail: [lsic@lsic.lt](mailto:lsic@lsic.lt)  
Website: <http://www.lsic.lt>  
Dr. A. Gaižauskiene, director

---

### Health in the Baltic Countries 2007

---

#### Editorial board:

National Institute for Health Development of Estonia:

K.Karelson, Dr. M. Rätsep, M. Ruuge

Health Statistics and Medical Technologies State Agency of Latvia:

MD, MHSc, PhD J. Karashkevica, Dr. D. Mihalovska

Lithuanian Health Information Centre:

Dr. A. Gaižauskiene, R. Gaidelyte

The edition was prepared by:

Health Statistics and Medical Technologies State Agency, Latvia

I.Karashkevics, Computer layout

## Preface

In the 16<sup>th</sup> edition “Health in the Baltic Countries 2007” there are presented the latest data of health statistics in the Baltic Countries – Republic of Estonia, Republic of Latvia and Republic of Lithuania. The most important figures of population health – demographics, mortality causes, spread of several diseases as well as health care resources and utilization – are included in the publication.

Annual and special reports of medical institutions, computerized health databases and registers are the basic data sources. Some data of vital statistics come from the official publications of the state statistics offices of the Baltic Countries.

This publication is a joint issue of National Institute for Health Development of Estonia, Health Statistics and Medical Technologies State Agency of Latvia and Lithuanian Health Information Centre. These institutions can provide more comprehensive data if necessary.

## Resident population on 01.01.2008

	<b>Estonia</b>	<b>Latvia</b>	<b>Lithuania</b>
<b>Population (thousand)</b>	1340.9	2270.9	3375.6
<b>Per 1 km<sup>2</sup></b>	31.0	35.2	51.7
<b>Urban (thousand)</b>	930.9	1541.0	2255.5
<b>%</b>	69.4	67.9	66.8
<b>Rural (thousand)</b>	410.0	729.9	1120.1
<b>%</b>	30.6	32.1	33.2
<b>Males (thousand)</b>	617.4	1046.9	1572
<b>%</b>	46.0	46.1	46.6
<b>Females (thousand)</b>	723.5	1224.0	1803.6
<b>%</b>	54.0	53.9	53.4
<b>Under working age (%)</b>	16.1	13.8	17.4
<b>Working age (%)</b>	64.3	65.6	63.1
<b>Over working age (%)</b>	19.6	20.6	19.5
<b>Working age</b>			
<b>Males</b>	16-63	15-61	16-62 y.6 m.
<b>Females</b>	16-60	15-60	16-60

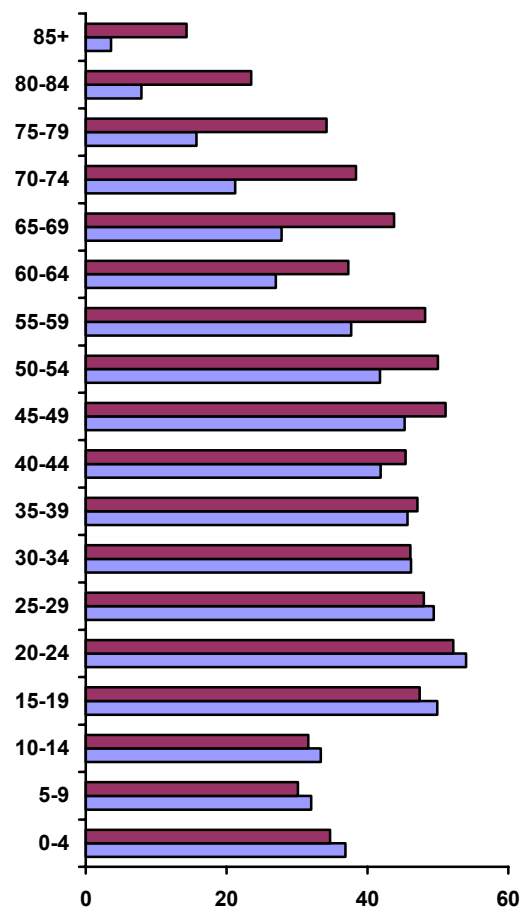
## Health in the Baltic countries

### General data

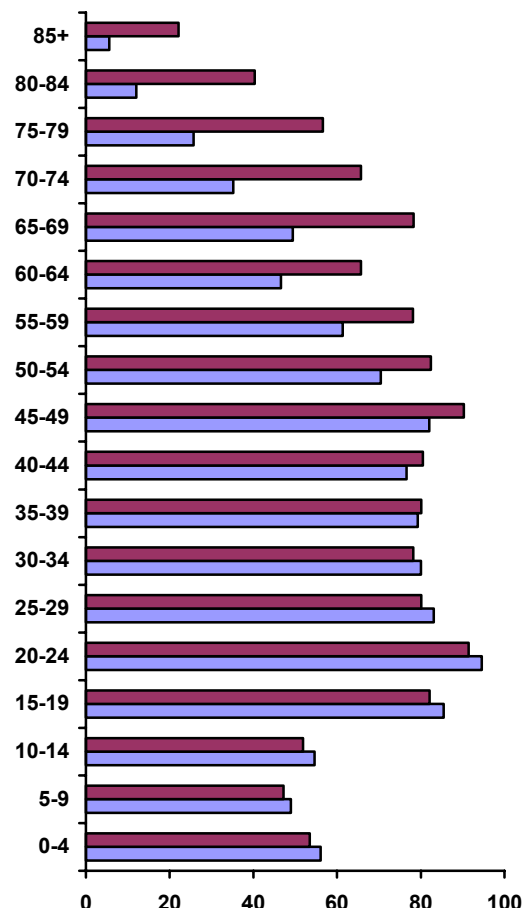
	<b>Estonia</b>	<b>Latvia</b>	<b>Lithuania</b>
Official name of the state	Republic of Estonia (Eesti Vabariik)	Republic of Latvia (Latvijas Republika)	Republic of Lithuania (Lietuvos Respublika)
Independence Day	24 February (1918)	18 November (1918)	16 February (1918)
State's governing body	Parliament (Riigikogu), 101 members, elected for the period of 4 years	Parliament (Saeima), 100 members, elected for the period of 4 years	Parliament (Seimas), 141 members, elected for the period of 4 years
Governmental structure	Republic, the President is elected for the period of 5 years	Republic, the President is elected for the period of 4 years	Republic, the President is elected for the period of 5 years
Area (thousand km <sup>2</sup> )	45.2	64.6	65.3
Major islands	Saaremaa, 2671 km <sup>2</sup> Hiiumaa, 989 km <sup>2</sup> Muhu, 198 km <sup>2</sup>	-	-
Major rivers	Võhandu, 162 km (through lake Tamula) Pärnu, 144 km Põltsamaa, 135 km	Daugava, 1005 km Gauja, 452 km Venta, 346 km	Nemunas, 937.4 km Neris, 509.5 km Venta, 346 km
Major lakes	Peipsi, 3555 km <sup>2</sup> (in Estonia 1529 km <sup>2</sup> ) Võrtsjärv, 271 km <sup>2</sup> Narva veehoidla (artificial lake) 191 km <sup>2</sup> (in Estonia 38 km <sup>2</sup> )	Lubāns, 80.7 km <sup>2</sup> Rāzna, 57.6 km <sup>2</sup> Engure, 40.5 km <sup>2</sup>	Drūkšiai, 44.8 km <sup>2</sup> Dysnai, 24.4 km <sup>2</sup> Dusia, 23.3 km <sup>2</sup>
The highest point	Suur Munamägi, 318 m	Gaiziņkalns, 311.6 m	Juozapinė, 293.6 m
Average daily temperature in 2007	+6.8 °C	+7.3 °C	+7.8 °C
Average daily temperature in January 2007	-1.5 °C	+0.3 °C	+1.2 °C
Average daily temperature in July 2007	+17.0 °C	+16.5 °C	+16.9 °C
Administrative units	15 counties, 33 cities, 14 cities without municipal status, 194 rural municipalities	26 counties, 26 districts, 77 cities and towns, 432 rural municipalities	10 counties, 103 cities and towns, 60 rural municipalities
Capital, resident population (thousand) at the beginning of 2008	Tallinn 397.6	Riga 717.4	Vilnius 555.1
Official language	Estonian	Latvian	Lithuanian
National currency	Estonian kroon=100 sents 1 EEK = 0.064 EUR	Latvian lats=100 santims 1 LVL = 1.423 EUR	Lithuanian lits=100 centas 1 LTL = 0.28962 EUR

Population by age at the beginning of 2008  
(thousand)

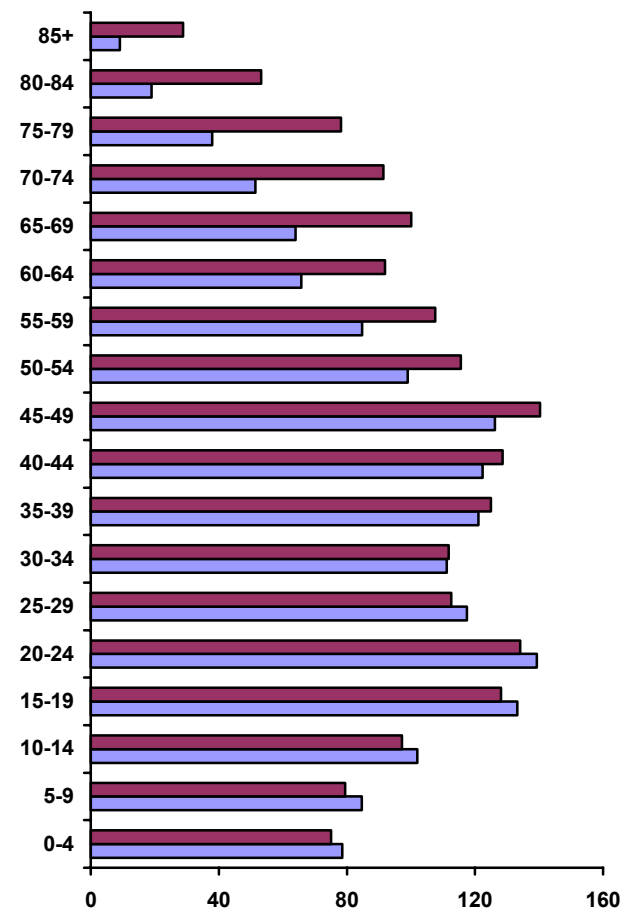
Estonia



Latvia



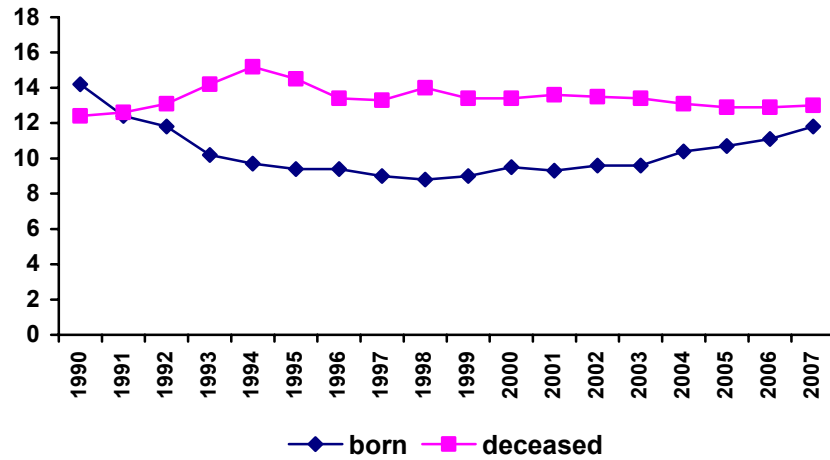
Lithuania



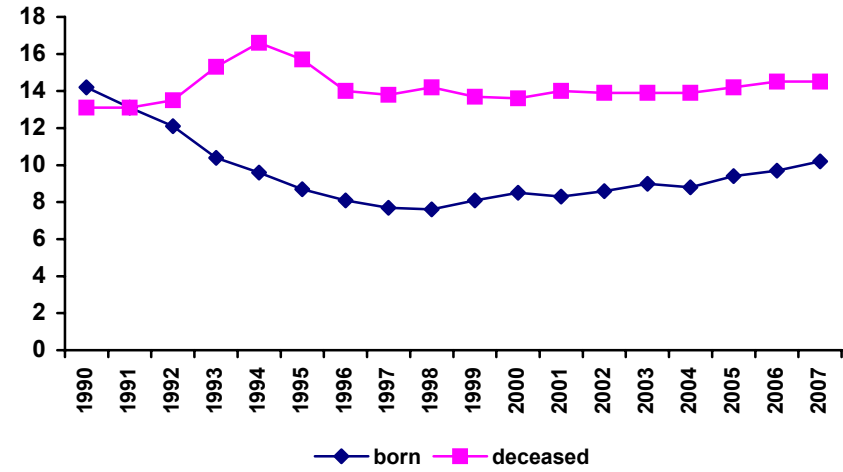
Male Female

Trends of demographics indicators  
Per 1000 population

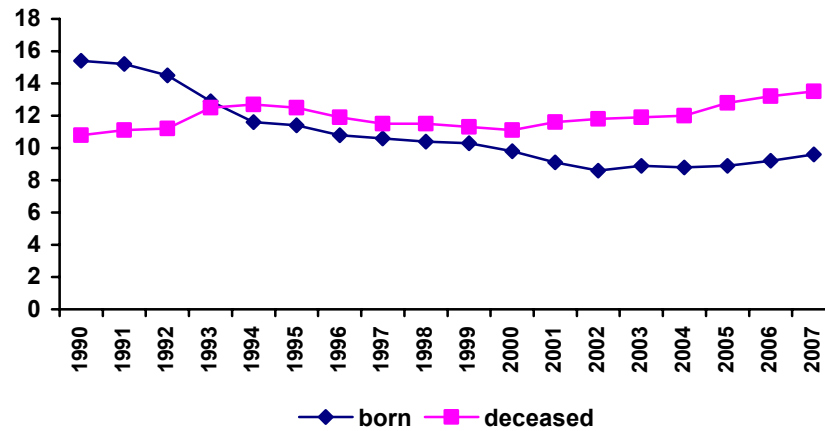
Estonia



Latvia



Lithuania



## Health in the Baltic countries

### Resident population by age and sex at 01.01.2008.

	Estonia						Latvia						Lithuania					
	Total		Males		Females		Total		Males		Females		Total		Males		Females	
	Number	%	Number	%	Number	%	Number	%	Number	%	Number	%	Number	%	Number	%	Number	%
Total	1340935	100.0	617410	100.0	723525	100.0	2270894	100.0	1046904	100.0	1223990	100.0	3366357	100.0	1566994	100.0	1799363	100.0
0-4	71597	5.3	36894	6.0	34703	4.8	109555	4.8	56056	5.4	53499	4.4	153653	4.6	78554	5.0	75099	4.2
5-9	62069	4.6	31958	5.2	30111	4.2	96222	4.2	49011	4.7	47211	3.9	164108	4.9	84567	5.4	79541	4.4
10-14	65037	4.9	33392	5.4	31645	4.4	106532	4.7	54605	5.2	51927	4.2	199237	5.9	102020	6.5	97217	5.4
15-19	97293	7.3	49859	8.1	47434	6.6	167514	7.4	85463	8.2	82051	6.7	261469	7.8	133261	8.5	128208	7.1
20-24	106178	7.9	54004	8.7	52174	7.2	186012	8.2	94570	9.0	91442	7.5	273337	8.1	139261	8.9	134076	7.5
25-29	97390	7.3	49396	8.0	47994	6.6	163197	7.2	83050	7.9	80147	6.5	230019	6.8	117465	7.5	112554	6.3
30-34	92304	6.9	46204	7.5	46100	6.4	158206	7.0	79992	7.6	78214	6.4	222989	6.6	111234	7.1	111755	6.2
35-39	92833	6.9	45709	7.4	47124	6.5	159412	7.0	79312	7.6	80100	6.5	246077	7.3	121089	7.7	124988	6.9
40-44	87287	6.5	41921	6.8	45366	6.3	157091	6.9	76595	7.3	80496	6.6	251161	7.5	122419	7.8	128742	7.2
45-49	96333	7.2	45255	7.3	51078	7.1	172274	7.6	82023	7.8	90251	7.4	266562	7.9	126297	8.1	140265	7.8
50-54	91738	6.8	41759	6.8	49979	6.9	152911	6.7	70482	6.7	82429	6.7	214653	6.4	99012	6.3	115641	6.4
55-59	85936	6.4	37707	6.1	48229	6.7	139447	6.1	61380	5.9	78067	6.4	192278	5.7	84715	5.4	107563	6.0
60-64	64298	4.8	26996	4.4	37302	5.2	111733	4.9	46556	4.4	65177	5.3	157658	4.7	65758	4.2	91900	5.1
65-69	71617	5.3	27844	4.5	43773	6.0	127677	5.6	49357	4.7	78320	6.4	164157	4.9	64030	4.1	100127	5.6
70-74	59601	4.4	21224	3.4	38377	5.3	100878	4.4	35159	3.4	65719	5.4	142750	4.2	51364	3.3	91386	5.1
75-79	49950	3.7	15708	2.5	34242	4.7	82222	3.6	25654	2.5	56568	4.6	116095	3.4	37857	2.4	78238	4.3
80-84	31402	2.3	7897	1.3	23505	3.2	52288	2.3	12002	1.1	40286	3.3	72243	2.1	19021	1.2	53222	3.0
85+	17899	1.3	3611	0.6	14288	2.0	27723	1.2	5637	0.5	22086	1.8	37911	1.1	9070	0.6	28841	1.6
Unknown	173	0.0	72	0.0	101	0.0	-	-	-	-	-	-	-	-	-	-	-	-

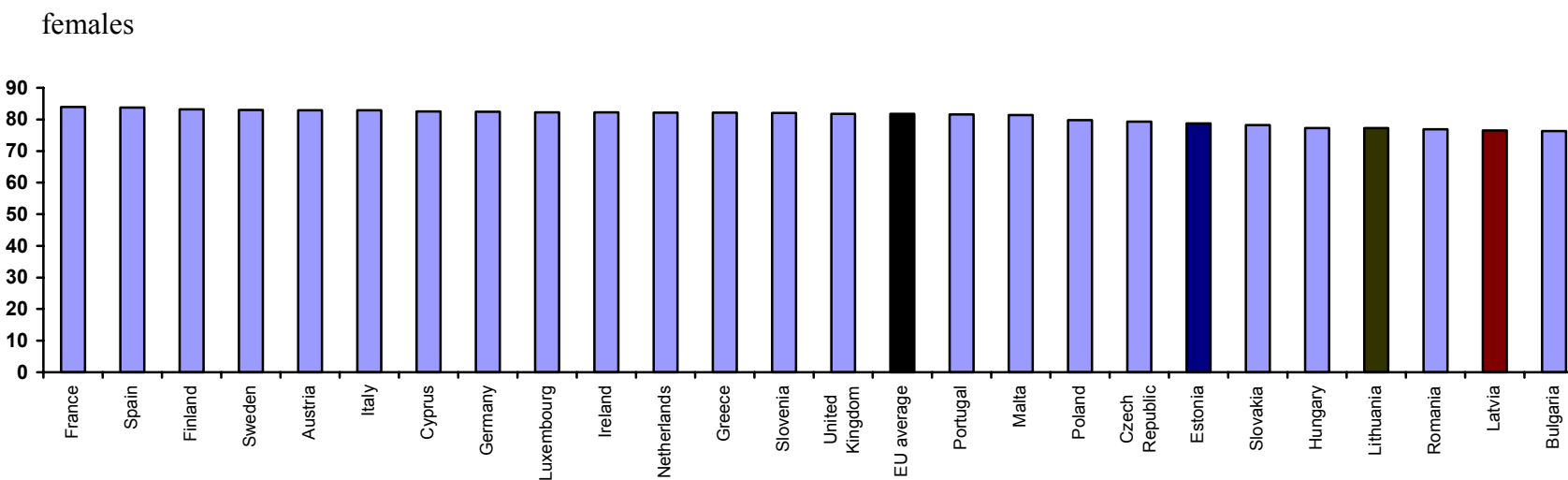
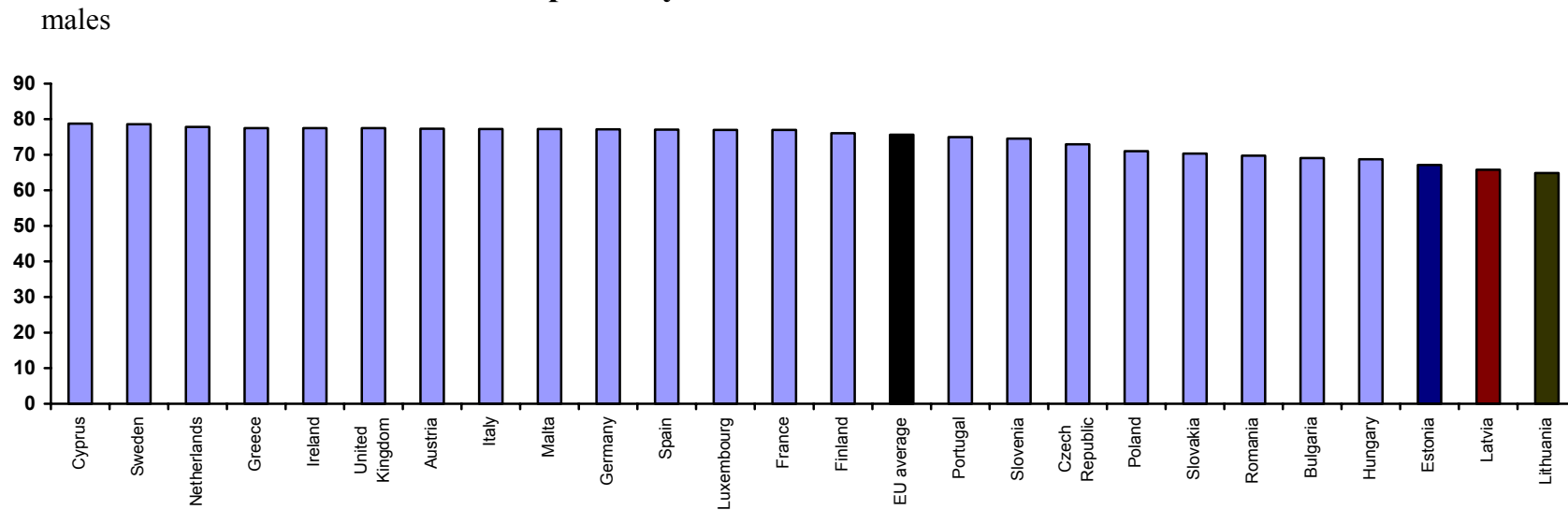
**Health in the Baltic countries**

**Natality, general mortality and natural increase per 1000 population**

Years	Estonia			Latvia			Lithuania		
	Natality	General mortality	Natural increase	Natality	General mortality	Natural increase	Natality	General mortality	Natural increase
1950	18.4	14.4	4.0	17.6	12.9	4.7	23.6	12.0	11.6
1960	16.6	10.5	6.1	16.7	10.0	6.7	22.5	7.8	14.7
1965	14.8	10.6	4.2	13.8	10.1	3.7	18.1	7.9	10.2
1970	16.0	11.2	4.8	14.6	11.3	3.3	17.7	8.9	8.8
1975	15.0	11.6	3.4	14.2	12.2	2.0	15.7	9.5	6.2
1980	14.9	12.4	2.5	14.1	12.8	1.3	15.2	10.5	4.7
1985	15.5	12.6	2.9	15.4	13.2	2.2	16.5	11.1	5.4
1990	14.2	12.4	1.8	14.2	13.1	1.1	15.4	10.8	4.6
1991	12.4	12.6	-0.2	13.1	13.1	0.0	15.2	11.1	4.1
1992	11.8	13.1	-1.3	12.1	13.5	-1.4	14.5	11.2	3.3
1993	10.2	14.2	-4.0	10.4	15.3	-4.9	12.9	12.5	0.4
1994	9.7	15.2	-5.5	9.6	16.6	-7.0	11.6	12.7	-1.1
1995	9.4	14.5	-5.1	8.7	15.7	-7.0	11.4	12.5	-1.1
1996	9.4	13.4	-4.0	8.1	14.0	-5.9	10.8	11.9	-1.1
1997	9.0	13.3	-4.3	7.7	13.8	-6.1	10.6	11.5	-0.9
1998	8.8	14.0	-5.2	7.6	14.2	-6.6	10.4	11.5	-1.1
1999	9.0	13.4	-4.4	8.1	13.7	-5.6	10.3	11.3	-1.0
2000	9.5	13.4	-3.9	8.5	13.6	-5.1	9.8	11.1	-1.3
2001	9.3	13.6	-4.3	8.3	14.0	-5.7	9.1	11.6	-2.5
2002	9.6	13.5	-3.9	8.6	13.9	-5.3	8.6	11.8	-3.2
2003	9.6	13.4	-3.8	9.0	13.9	-4.9	8.9	11.9	-3.0
2004	10.4	13.1	-2.7	8.8	13.9	-5.1	8.8	12.0	-3.2
2005	10.7	12.9	-2.2	9.4	14.2	-4.8	8.9	12.8	-3.9
2006	11.1	12.9	-1.8	9.7	14.5	-4.7	9.2	13.2	-4.0
2007	11.8	13.0	-1.2	10.2	14.5	-4.3	9.6	13.5	-3.9



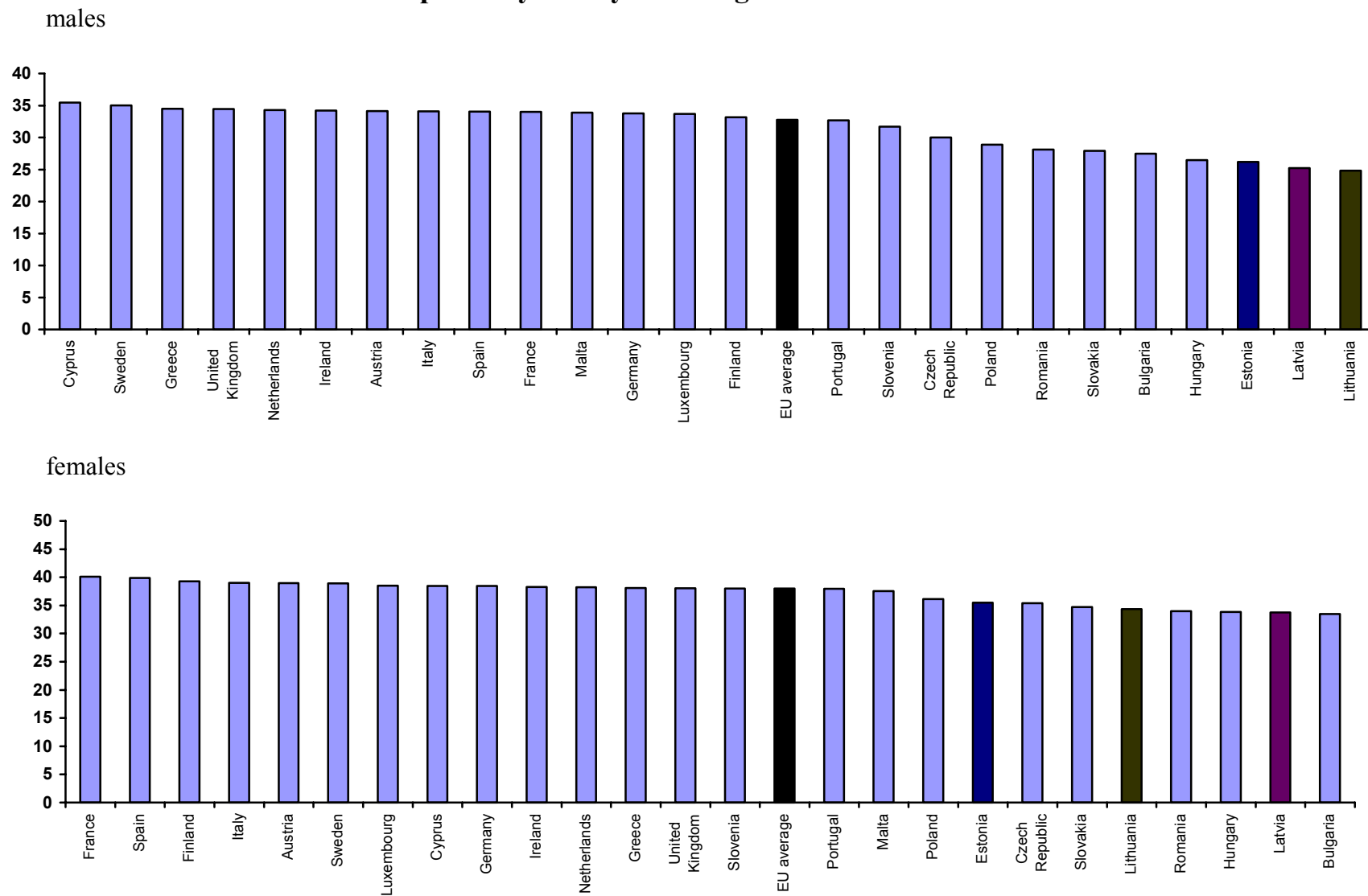
Life expectancy at birth in EU member states\*



\*Data for Estonia, Latvia and Lithuania – 2007, other countries 2003-2007

## Health in the Baltic countries

### Life expectancy at 45 years of age in EU member states\*



\* Data for Estonia, Latvia and Lithuania – 2007, other countries 2003-2007

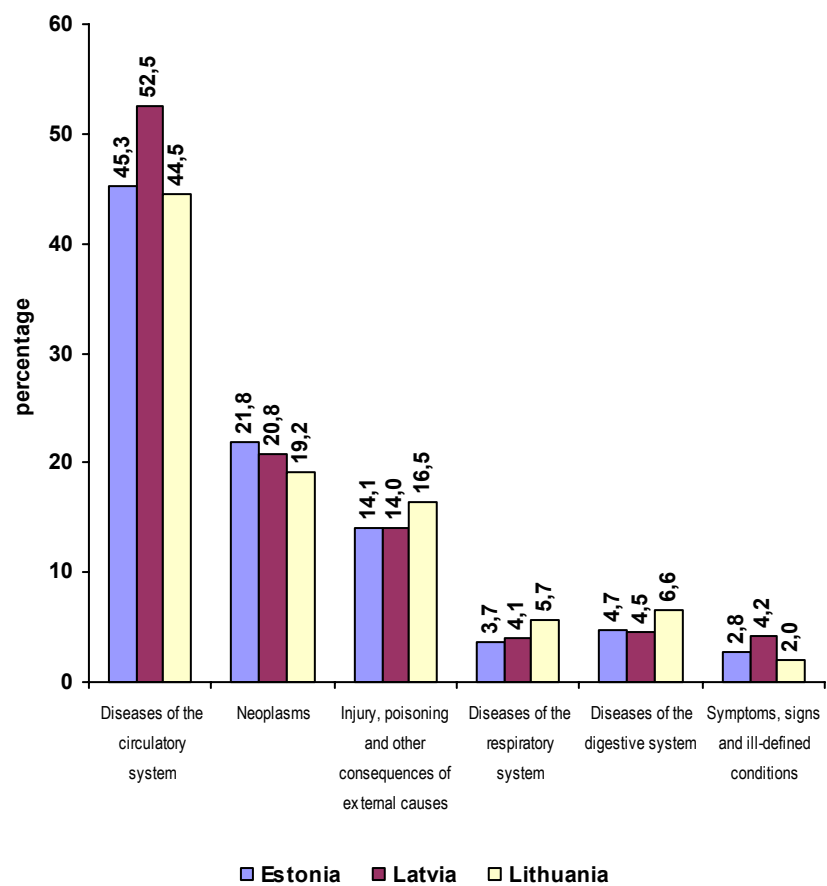
## Health in the Baltic countries

### Deaths by cause per 100,000 population in 2007

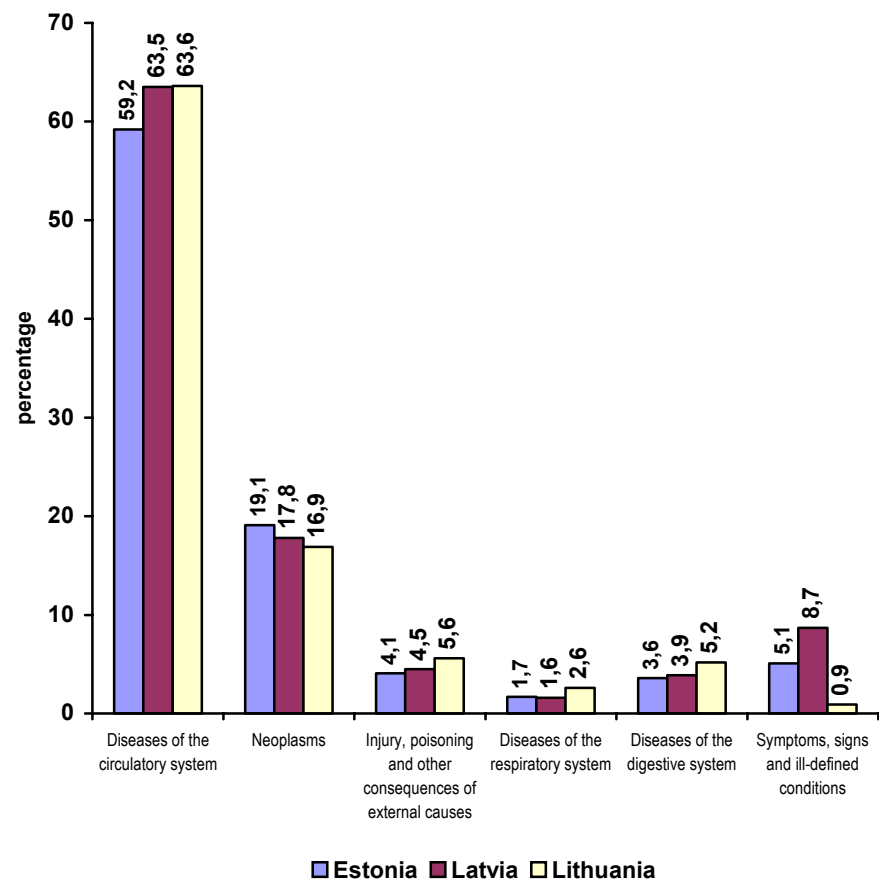
Causes of death	Estonia			Latvia			Lithuania		
	Total	Males	Females	Total	Males	Females	Total	Males	Females
Certain infectious and parasitic diseases	10.4	15.9	5.8	12.9	18.5	8.2	14.9	23.5	7.5
Neoplasms	266.5	317.7	222.8	263.5	304.7	228.3	248.7	305.4	199.3
Diseases of the blood and blood-forming organs and certain disorders involving the immune mechanisms	21.2	19.1	23.0	1.8	0.8	2.6	0.9	0.9	1.0
Endocrine, nutritional and metabolic diseases	1.3	1.0	1.5	18.8	15.9	21.3	10.4	9.3	11.4
Mental and behavioural disorders	18.9	30.8	8.7	9.2	10.6	8.1	3.1	3.9	2.3
Diseases of the nervous system and sense organs	20.6	22.0	19.3	16.3	21.1	12.1	17.7	21.6	14.3
Diseases of the circulatory system	675.1	658.1	689.5	792.7	768.0	813.8	720.1	699.1	738.3
Diseases of the respiratory system	35.6	54.4	19.5	38.7	59.8	20.6	57.9	89.6	30.2
Diseases of the digestive system	54.0	67.7	42.4	56.7	65.3	49.4	80.7	103.7	60.7
Diseases of the skin and subcutaneous tissue	1.2	0.5	1.8	1.8	1.8	1.8	1.8	2.2	1.4
Diseases of the musculoskeletal system and connective tissue	4.1	2.6	5.4	2.9	2.0	3.7	2.8	1.6	3.9
Diseases of the genitourinary system	11.8	11.2	12.3	14.7	16.4	13.3	10.9	12.4	9.6
Pregnancy, childbirth and puerperium	-	-	0.0	-	-	0.5	-	-	0.1
Certain conditions originating in perinatal period	2.7	2.9	2.5	4.2	4.7	3.7	2.1	2.2	2.0
Congenital malformations, deformations and chromosomal abnormalities	3.2	4.1	2.5	4.1	4.7	3.6	3.6	3.8	3.5
Symptoms, signs and abnormal clinical and laboratory findings, not elsewhere classified	50.9	41.1	59.3	88.6	61.7	111.6	20.3	31.3	10.8
Injury, poisoning and certain other consequences of external causes	120.2	205.4	47.4	125.2	204.7	57.3	155.4	259.7	64.5
<b>TOTAL</b>	<b>1297.6</b>	<b>1454.3</b>	<b>1163.8</b>	<b>1452.3</b>	<b>1560.5</b>	<b>1359.8</b>	<b>1351.6</b>	<b>1570.2</b>	<b>1161.0</b>

Main causes of death in 2007

Males

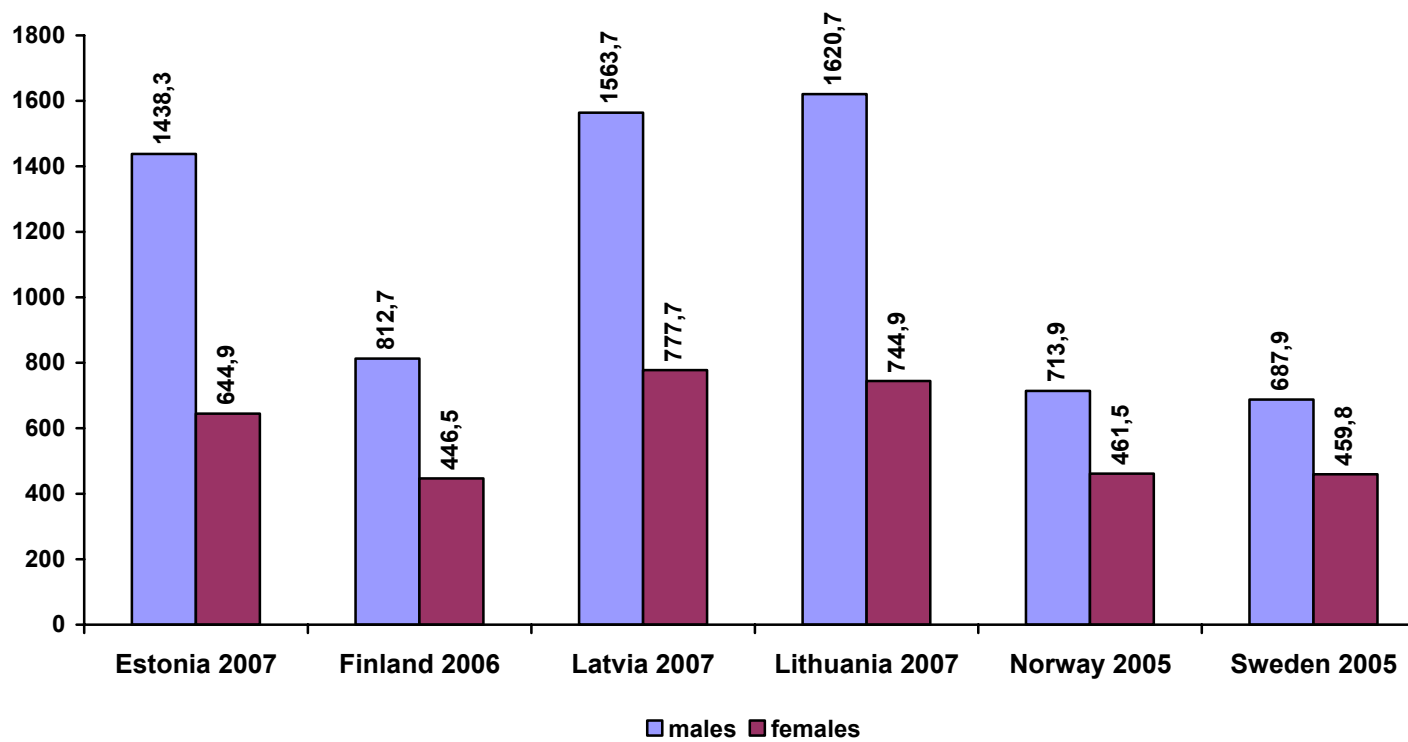


Females



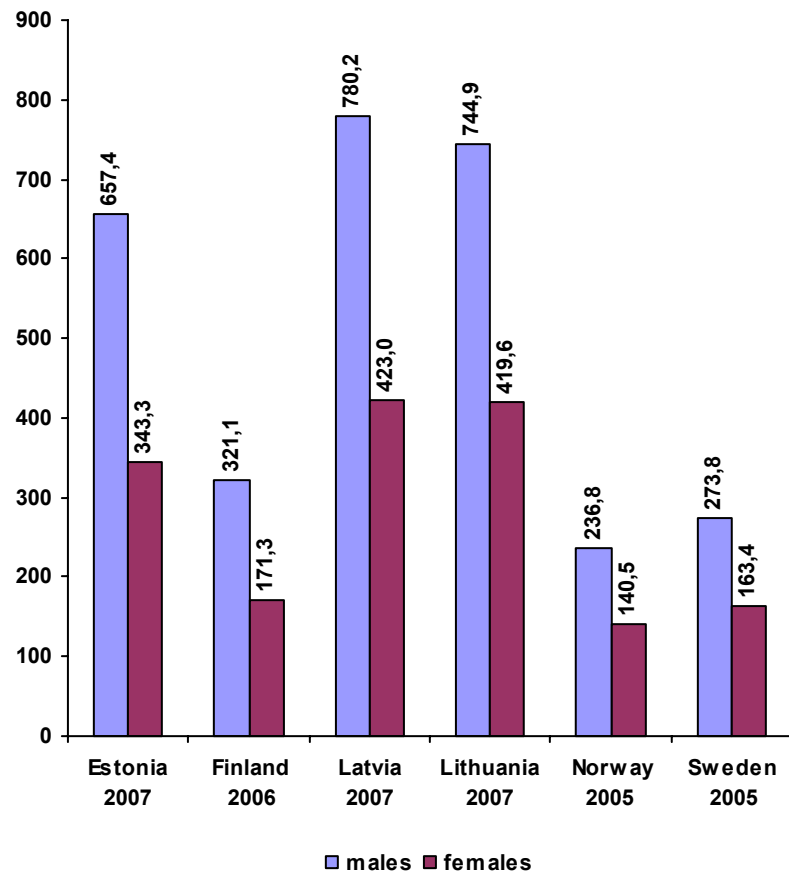
## Health in the Baltic countries

### Age-standardized death rates (per 100,000 European standard population)

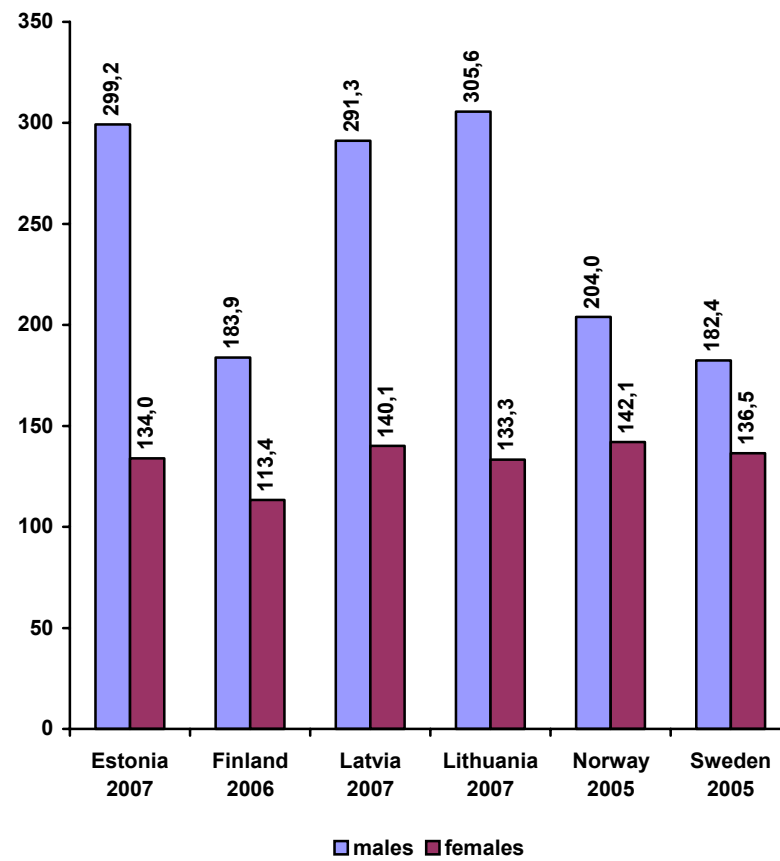


Age-standardized death rates  
(per 100,000 European standard population)

diseases of circulatory system



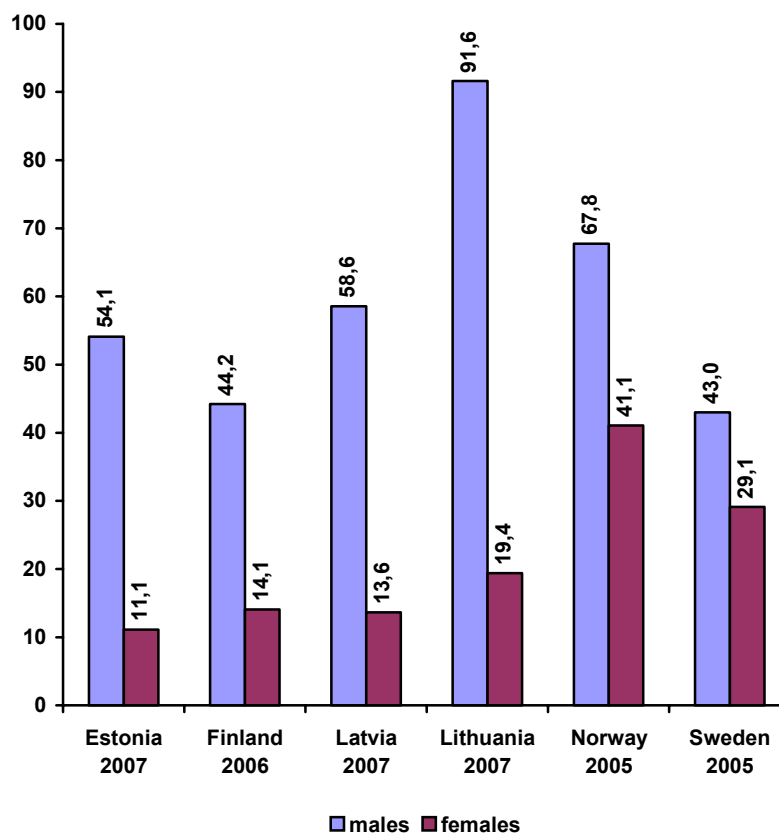
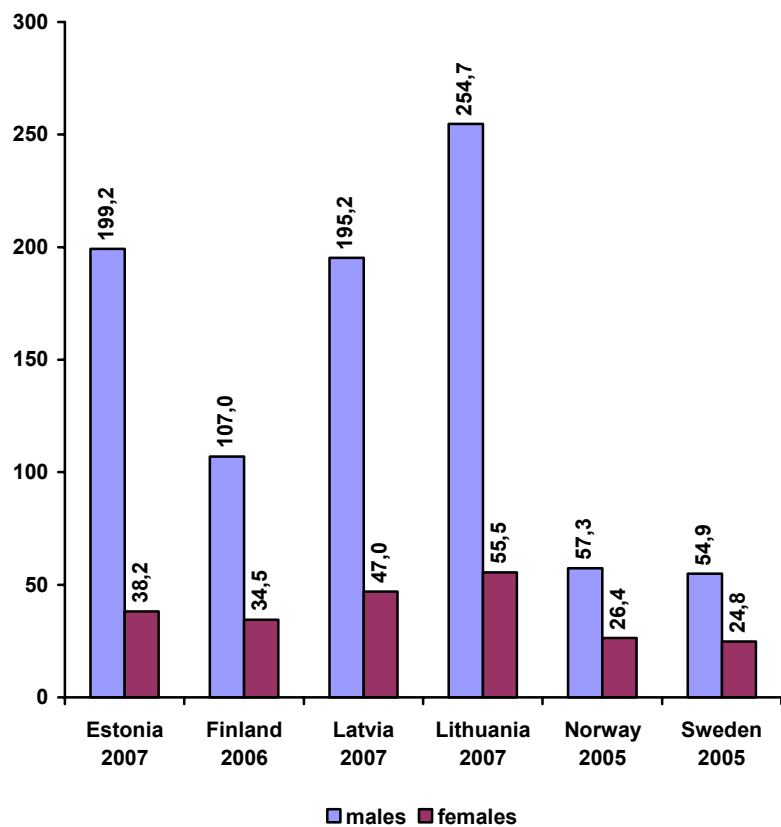
malignant neoplasms



**Age-standardized death rates**  
(per 100,000 European standard population)

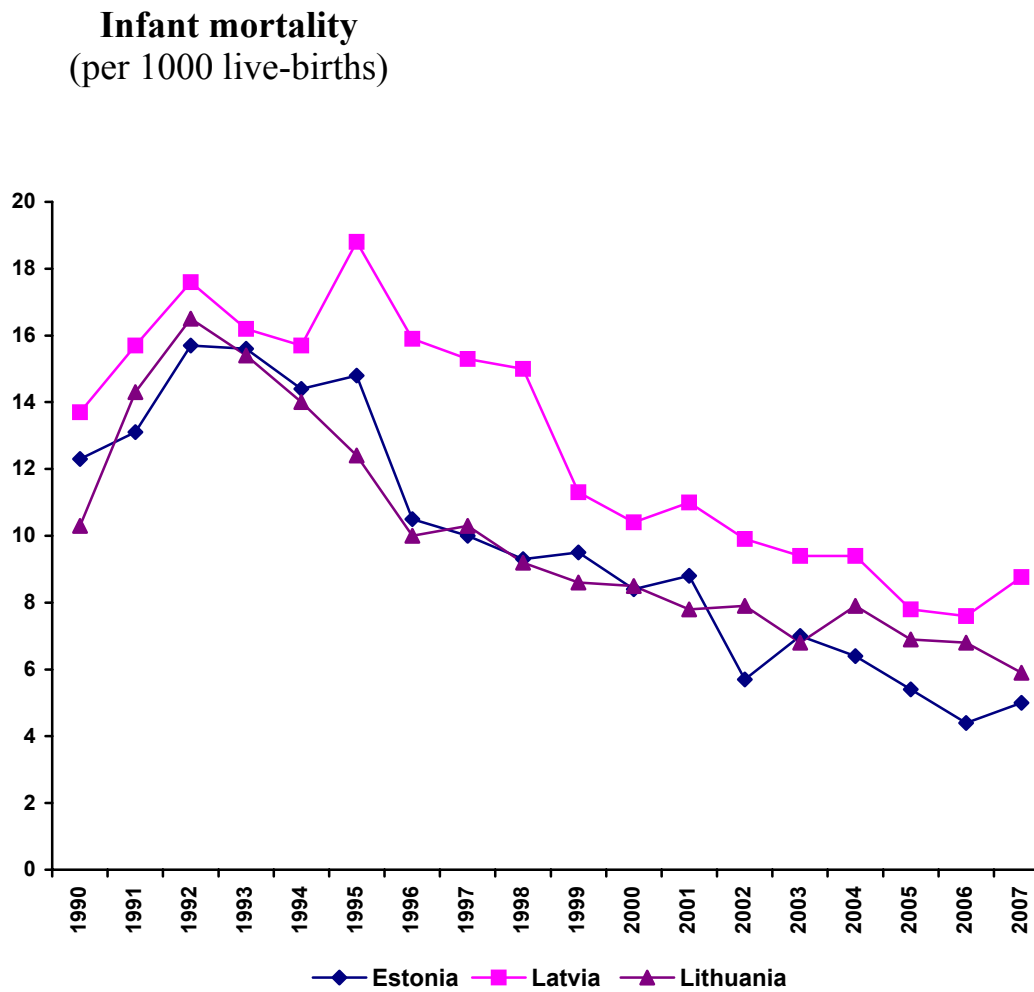
injuries, poisoning and other consequences of external causes

diseases of respiratory system



## Health in the Baltic countries

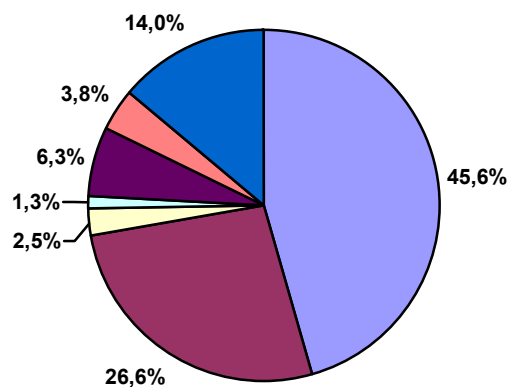
Years	Estonia	Latvia	Lithuania
1940	84.9	74.9	98.5
1960	31.6	27.0	46.5
1965	20.3	18.6	35.4
1970	17.7	17.9	19.4
1975	18.2	20.3	19.6
1980	17.1	15.4	14.4
1985	14.1	13.0	14.2
1990	12.3	13.7	10.3
1991	13.1	15.7	14.3
1992	15.7	17.6	16.5
1993	15.6	16.2	15.4
1994	14.4	15.7	14.0
1995	14.8	18.8	12.4
1996	10.5	15.9	10.0
1997	10.0	15.3	10.3
1998	9.3	10.4	8.5
1999	9.5	11.3	8.6
2000	8.4	10.4	8.5
2001	8.8	11.0	7.8
2002	5.7	9.9	7.9
2003	7.0	9.4	6.8
2004	6.4	9.4	7.9
2005	5.4	7.8	6.9
2006	4.4	7.6	6.8
2007	5.0	8.8	5.9





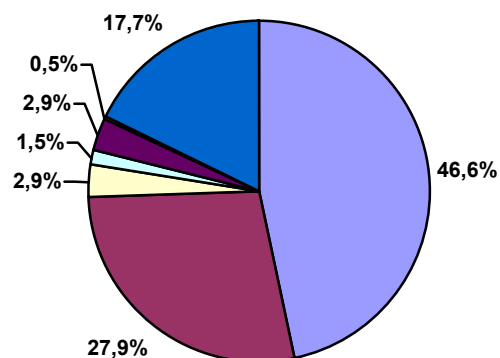
Structure of infant mortality (%) in 2007

Estonia



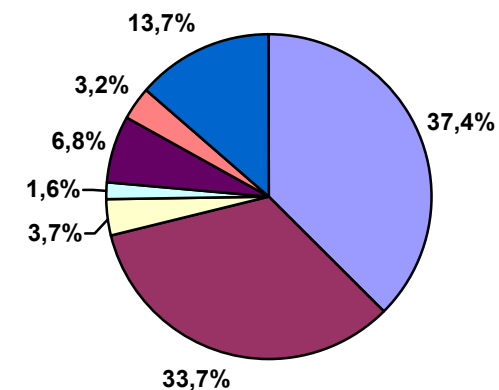
- Certain conditions originating in the perinatal period
- Congenital malformations
- Diseases of the respiratory system
- Infectious and parasitic diseases
- Injury, poisoning and other consequences of external causes
- Diseases of the nervous system and sense organs
- Other causes

Latvia



- Certain conditions originating in the perinatal period
- Congenital malformations
- Diseases of the respiratory system
- Infectious and parasitic diseases
- Injury, poisoning and other consequences of external causes
- Diseases of the nervous system and sense organs
- Other causes

Lithuania



- Certain conditions originating in the perinatal period
- Congenital malformations
- Diseases of the respiratory system
- Infectious and parasitic diseases
- Injury, poisoning and other consequences of external causes
- Diseases of the nervous system and sense organs
- Other causes

**Infant mortality by causes**  
per 10,000 live births in 2007

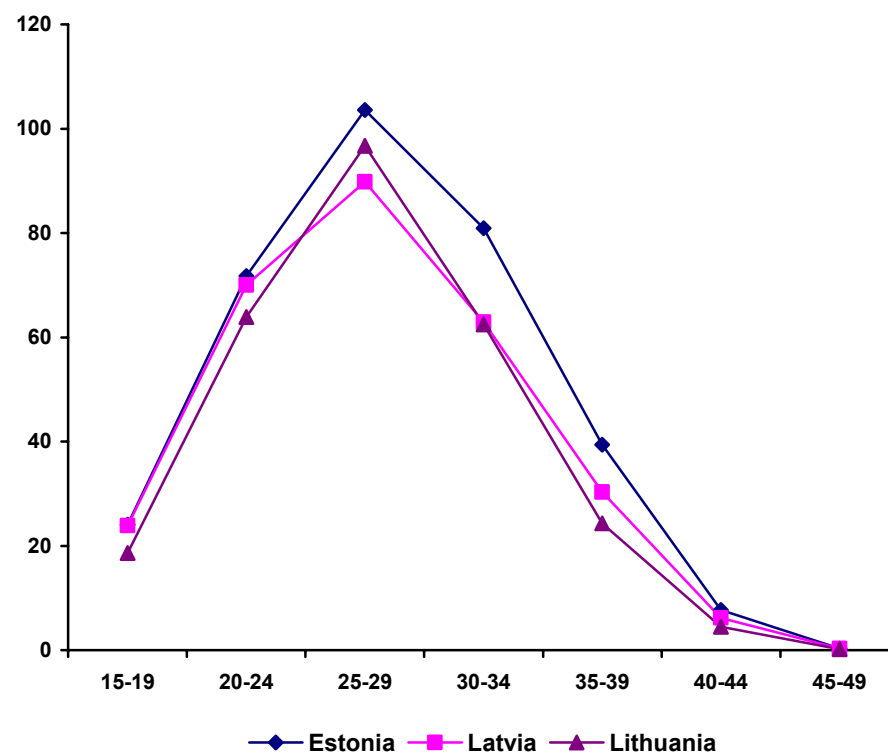
	Estonia		Latvia		Lithuania	
	Rate	%	Rate	%	Rate	%
Certain conditions originating in the perinatal period	22.8	45.6	40.8	46.6	22.1	37.4
Congenital malformations	13.3	26.6	24.5	27.9	19.9	33.7
Diseases of the respiratory system	1.3	2.5	2.6	2.9	2.2	3.7
Infectious and parasitic diseases	0.6	1.3	1.3	1.5	0.9	1.6
Injury, poisoning and other consequences of the external causes	3.2	6.3	2.6	2.9	4.0	6.8
Diseases of the nervous system and sense organs	1.9	3.8	0.4	0.5	1.9	3.2
Diseases of the digestive system	0.6	1.3	0.0	0.0	0.0	0.0
Other causes	6.3	12.7	15.5	17.7	8.1	13.7
<b>TOTAL</b>	<b>50.1</b>	<b>100.0</b>	<b>87.6</b>	<b>100.0</b>	<b>59.1</b>	<b>100.0</b>

**Perinatal, neonatal and maternal mortality**  
in 2007

	Estonia	Latvia	Lithuania
Perinatal mortality per 1000 births	5.9	9.4	7.4
Still-birth rate per 1000 births	4.1	5.2	5.0
Neonatal mortality per 1000 live births	2.9	5.8	3.3
Early neonatal mortality per 1000 live births	1.8	4.2	2.5
Maternal mortality per 100,000 live births	0.0	25.8	6.2
Standard perinatal mortality	4.3	6.5	5.2
Standard still-birth rate	3.2	3.5	3.8

**Birth rates by age of mother in 2007**  
per 1000 women

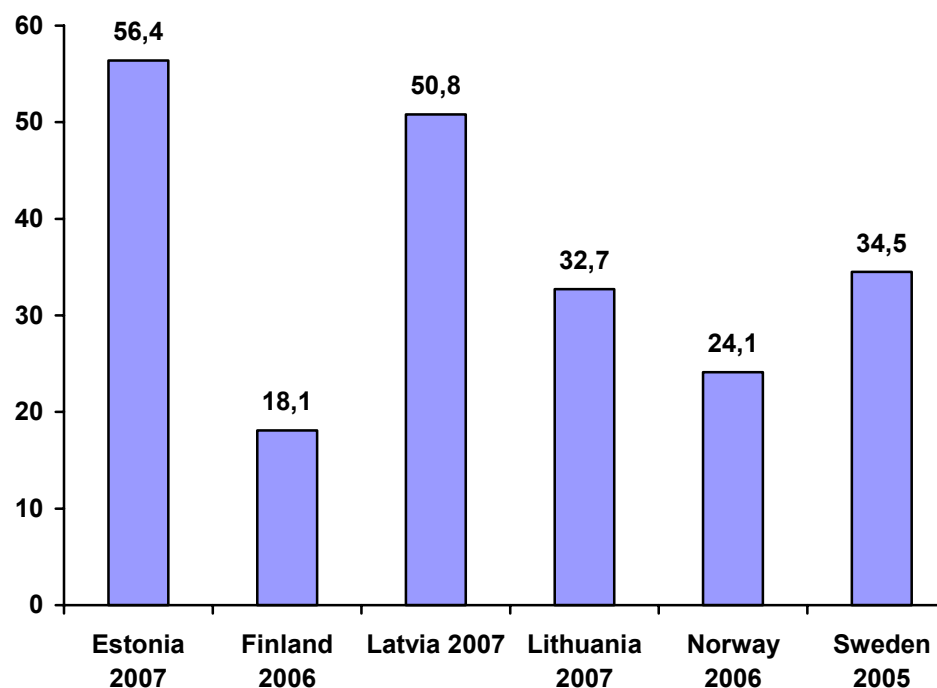
	<b>Estonia</b>	<b>Latvia</b>	<b>Lithuania</b>
Women 15-49 years of age	46.6	40.0	36.7
Of them by age:			
15-19	24.1	23.9	18.6
20-24	71.7	70.0	63.9
25-29	103.6	89.8	96.7
30-34	80.9	62.9	62.5
35-39	39.4	30.3	24.3
40-44	7.7	6.2	4.5
45-49	0.3	0.3	0.2
<b>Total fertility rate</b>	<b>1.64</b>	<b>1.41</b>	<b>1.35</b>



**Abortions in 2007**

	<b>Estonia</b>	<b>Latvia</b>	<b>Lithuania</b>
<b>All abortions</b>			
Total number	11144	16290	14667
Per 1000 women aged 15-49 years	32.9	27.9	16.6
Per 100 live births	70.6	70.0	50.0
<b>Induced abortions</b>			
Total number	8900	11814	9596
Per 1000 women aged 15-49 years	26.3	20.2	10.9
Per 100 live births	56.4	50.8	32.7
<b>Percentage</b>			
Spontaneous abortions	7.1	12.5	23.3
Legal abortions	77.6	71.2	64.5
Medical abortions	2.3	1.3	1.0
Other abortions	13.0	15.0	11.2

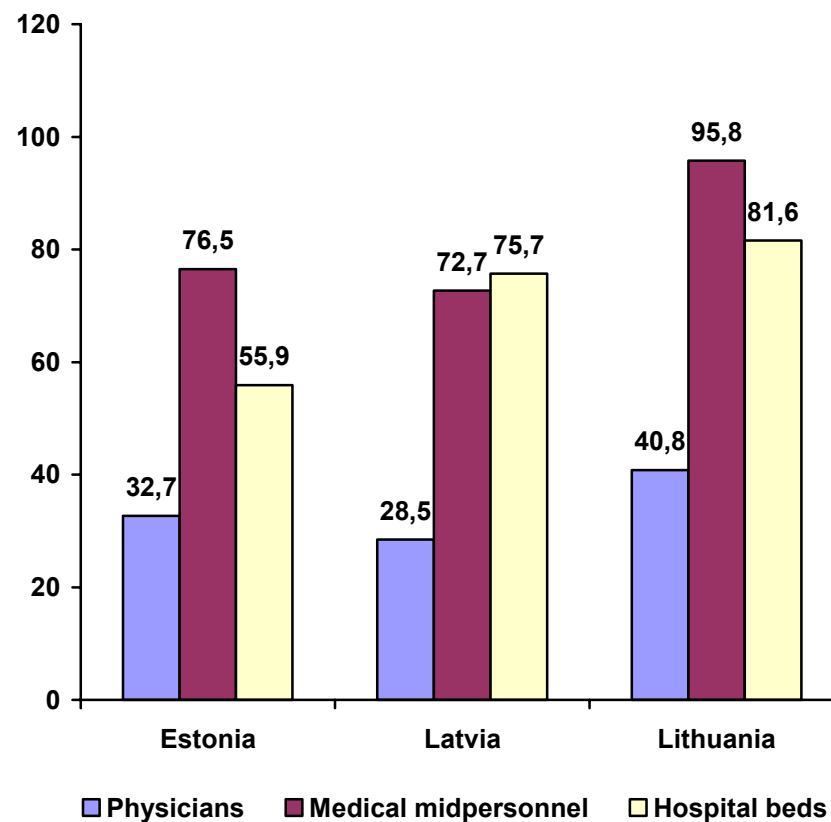
**Induced abortions per 100 live births**



Health facilities in 2007

	Estonia	Latvia	Lithuania
<b>Hospitals</b>	56	94	165
<b>Hospital beds:</b>			
Thousand	7.5	17.2	27.5
Per 10,000 population	55.9	75.7	81.6
<b>Physicians:</b>			
Thousand	4.4*	6.5	13.7
Per 10,000 population	32.7*	28.5	40.8
<b>Dentists:</b>			
Thousand	1.2*	1.6	2.4
Per 10,000 population	8.9*	6.8	7.1
<b>Medical midpersonnel:</b>			
Thousand	10.3*	16.5	32.2
Per 10,000 population	76.5*	72.7	95.8
<b>Hospital admission:</b>			
Thousand	253.8	531.8	802.6
Per 100 population	18.9	23.4	23.8
<b>Physicians visits:</b>			
Million	8.8	13.1	23.1
Per 1 inhabitant	6.5	5.8	6.9

Number of physicians, medical midpersonnel and hospital beds per 10,000 population in 2007\*



\* Estonia: medical staff - data of 2006

Physicians by speciality at the end of 2007

	Estonia *****		Latvia		Lithuania	
	Number	Per 10,000 population	Number	Per 10,000 population	Number	Per 10,000 population
TOTAL *	4393	32.7	6462	28.5	13729	40.8
Of them:						
Family doctors and general practitioners	853	6.4	1250	5.5	1841	5.5
Internal medicine **	524	3.9	735	3.2	2302	6.8
Surgery ***	404	3.0	632	2.8	1233	3.7
Paediatrics	241	1.8	318	1.4	1168	3.5
Gynaecology (include obstetrics)	272	2.0	431	1.9	777	2.3
Oncology	30	0.2	79	0.3	118	0.4
Otolaryngology	100	0.7	156	0.7	286	0.8
Ophthalmology	112	0.8	199	0.9	339	1.0
Anaesthesiology	255	1.9	371	1.6	647	1.9
Neurology	131	1.0	249	1.1	495	1.5
Psychiatry	181	1.3	243	1.1	564	1.7
Narcology	-	-	74	0.3	30	0.1
Tuberculosis *****	-	-	118	0.5	25	0.1
Infectology	33	0.2	61	0.3	71	0.2
Epidemiology	-	-	13	0.1	90	0.3
Dermatology & venerology	78	0.6	124	0.5	170	0.5
Radiology	185	1.4	268	1.2	483	1.4
Pathology	48	0.4	36	0.2	64	0.2
Forensic medicine	-	-	42	0.2	62	0.2
Laboratory	110	0.8	214	0.9	89	0.3
Hygiene	-	-	3	0.01	188	0.6
Others	836	6.2	846	3.7	2687	8.0
* Number of dentists is not included;						
** Include specialists of therapeutics, cardiology, gastroenterology, allergology, endocrinology, haematology, nephrology, pulmonology, dietetics, rheumatology, geriatrics;						
***Include surgeons, neurosurgeons, thoracic surgeons, cardiovascular surgeons, urologists, plastic surgeons, transplantologists, paediatric surgeons, traumatologists;						
**** For Estonia specialists of tuberculosis are included to internal medicine;						
***** Estonia – data of 2006						

Hospital beds by speciality at the end of 2007

	Estonia			Latvia*			Lithuania		
	Number of beds	Per 10000 population	%	Number of beds	Per 10000 population	%	Number of beds	Per 10000 population	%
<b>TOTAL</b>	7473	55.7	100.0	17233	75.7	100	27476	81.6	100
Of them:									
Internal medicine	1454	10.8	19.5	2955	13.0	17.1	4858	14.4	17.7
Rehabilitation	333	2.5	4.5	868	3.8	5.0	1310	3.9	4.8
Surgery (include orthopaedics)	1294	9.6	17.3	3464	15.2	20.1	4839	14.4	17.6
Oncology (include radiology)	99	0.7	1.3	780	3.4	4.5	707	2.1	2.6
Otolaryngology	63	0.5	0.8	186	0.8	1.1	305	0.9	1.1
Ophthalmology	27	0.2	0.4	173	0.8	1.0	310	0.9	1.1
Obstetrics	306	2.3	4.1	634	2.8	3.7	865	2.6	3.1
Gynaecology	197	1.5	2.6	589	2.6	3.4	816	2.4	3.0
Neurology	195	1.5	2.6	1004	4.4	5.8	1693	5.0	6.2
Dermatology & venerology	62	0.5	0.8	116	0.5	0.7	120	0.4	0.4
Infectious	178	1.3	2.4	613	2.7	3.6	563	1.7	2.0
Tuberculosis	270	2.0	3.6	943	4.1	5.5	1277	3.8	4.6
Paediatrics	322	2.4	4.3	832	3.7	4.8	1401	4.2	5.1
Psychiatry	754	5.6	10.1	3119	13.7	18.1	3191	9.5	11.6
Narcology	-	-	-	391	1.7	2.3	262	0.8	1.0
General & nursing	1348	10.1	18.0	376	1.7	2.2	4243	12.6	15.4

\* Hospital beds average in 2007; excluding short-term social care beds

**Selected notifiable diseases**  
per 100,000 population in 2007

	<b>Estonia</b>	<b>Latvia</b>	<b>Lithuania</b>
Typhoid fever and paratyphoid	0.1	0.1	0.1
Salmonella infections	31.9	27.5	69.0
Bacillary dysentery	8.5	3.7	4.4
Other intestinal infections	255.4	294.0	263.9
Diphtheria	0.0	0.8	0.0
Whooping cough	30.5	1.2	0.5
Meningococcal infection	0.8	0.0	2.0
Measles	0.1	0.0	0.0
Tick-borne viral encephalitis	10.4	7.5	6.9
Viral hepatitis, total	20.0	86.6	5.8
A	0.7	0.7	0.7
B	3.3	7.2	2.5
Acute upper respiratory infections	18548.1	n.a.	18028.5
Influenza	211.1	n.a.	1650.8
<b>Malignant neoplasms</b>			
Incidence	451.7*	445.1	482.7
Prevalence	2776.6**	2615.5	1998.7*
<b>Tuberculosis</b>			
Incidence (excl. relapses)	30.4	47.4	58.6
Prevalence	27.7	60.7	203.0
Syphilis	5.7	13.2	8.2
Gonorrhoea	13.0	29.4	14.0
AIDS	4.2	1.6	0.8
HIV carrier	47.2	15.4	3.1

n.a. – data are not being collected

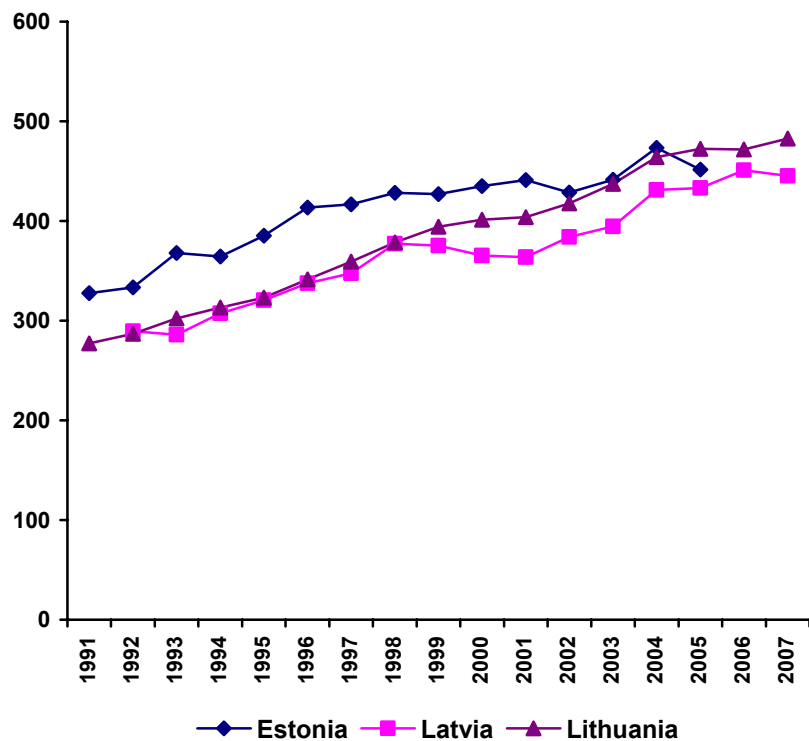
\*data of 2005

\*\* data of 2003

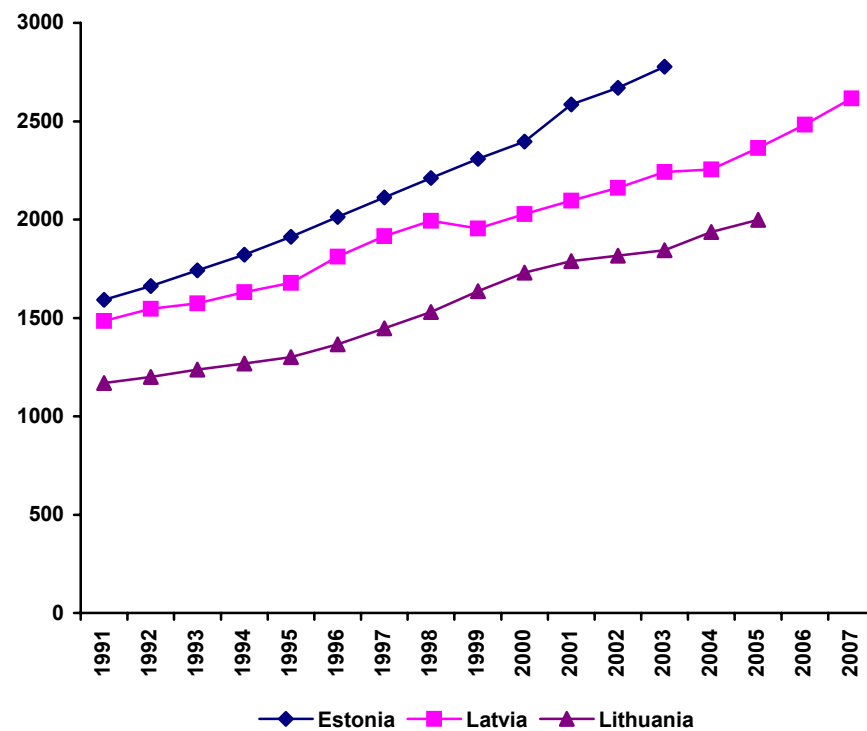


Malignant neoplasms  
(per 100,000 population)

incidence

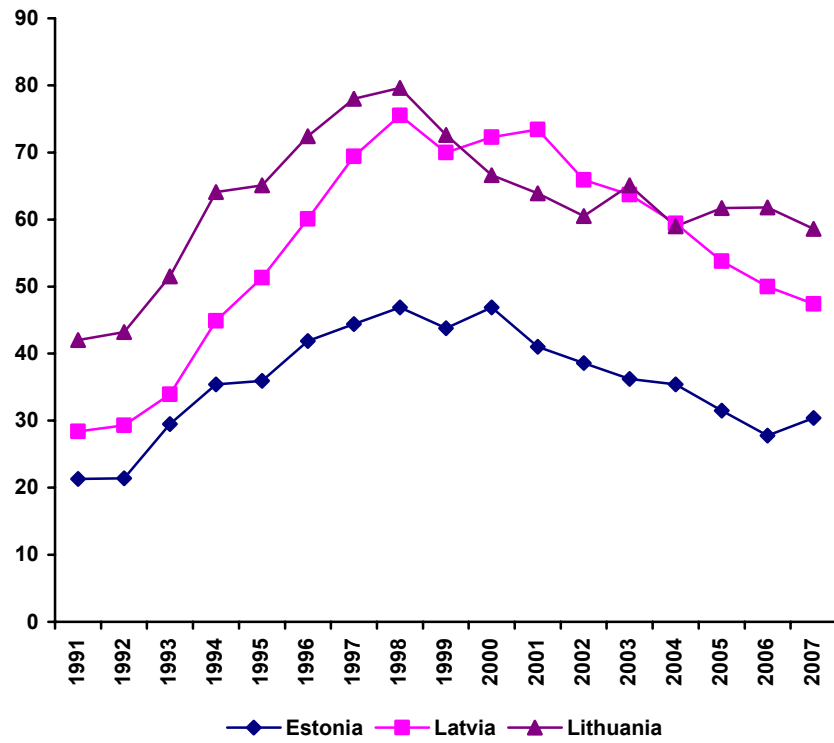


prevalence

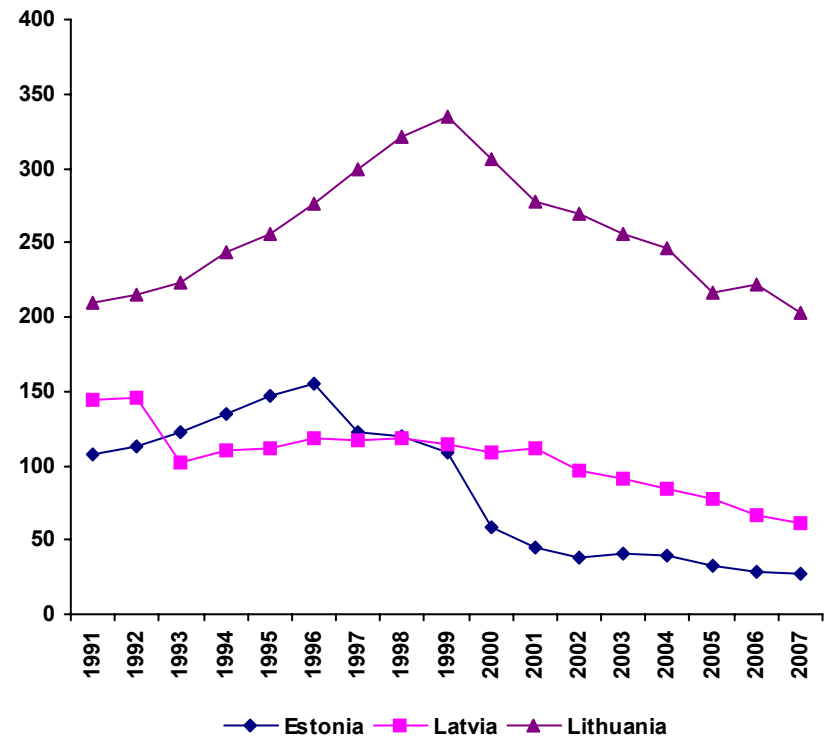


**Tuberculosis**  
(per 100,000 population)

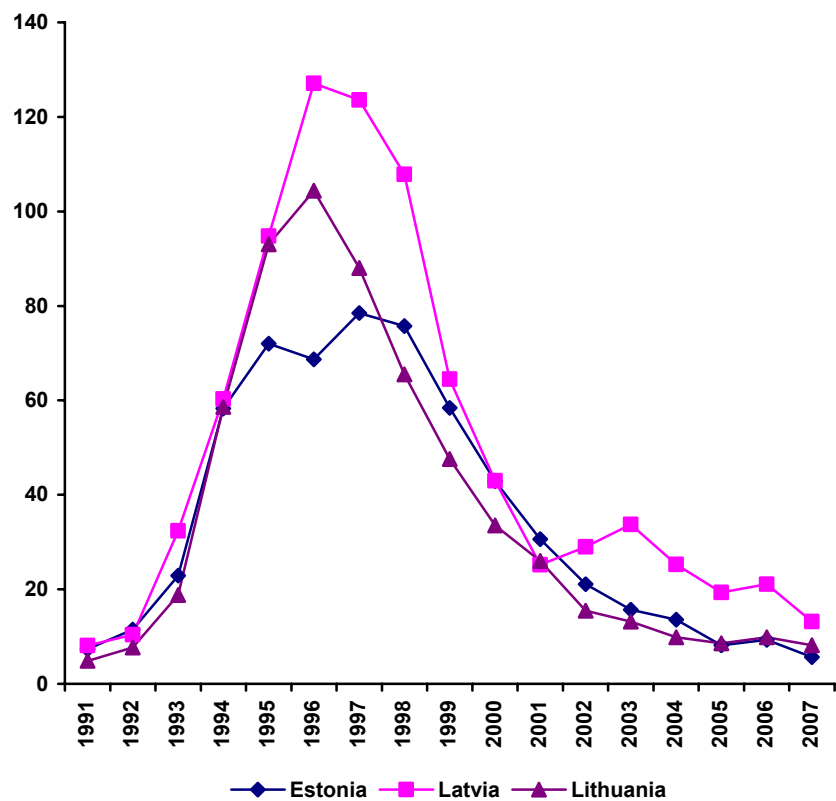
incidence (excl. relapses)



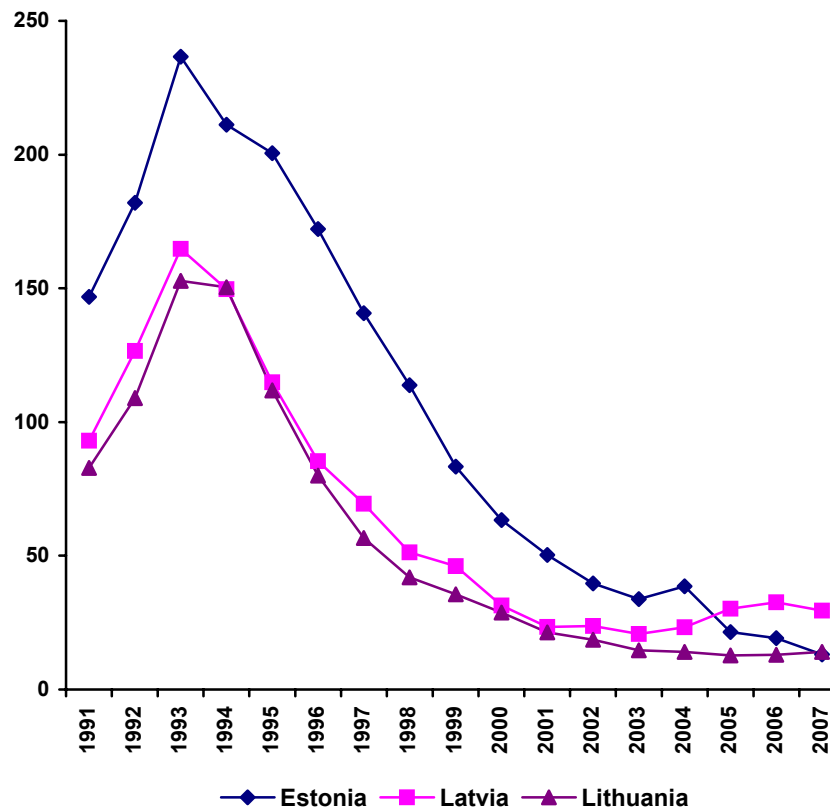
prevalence



**Incidence of syphilis**  
(per 100,000 population)



**Incidence of gonorrhoea**  
(per 100,000 population)

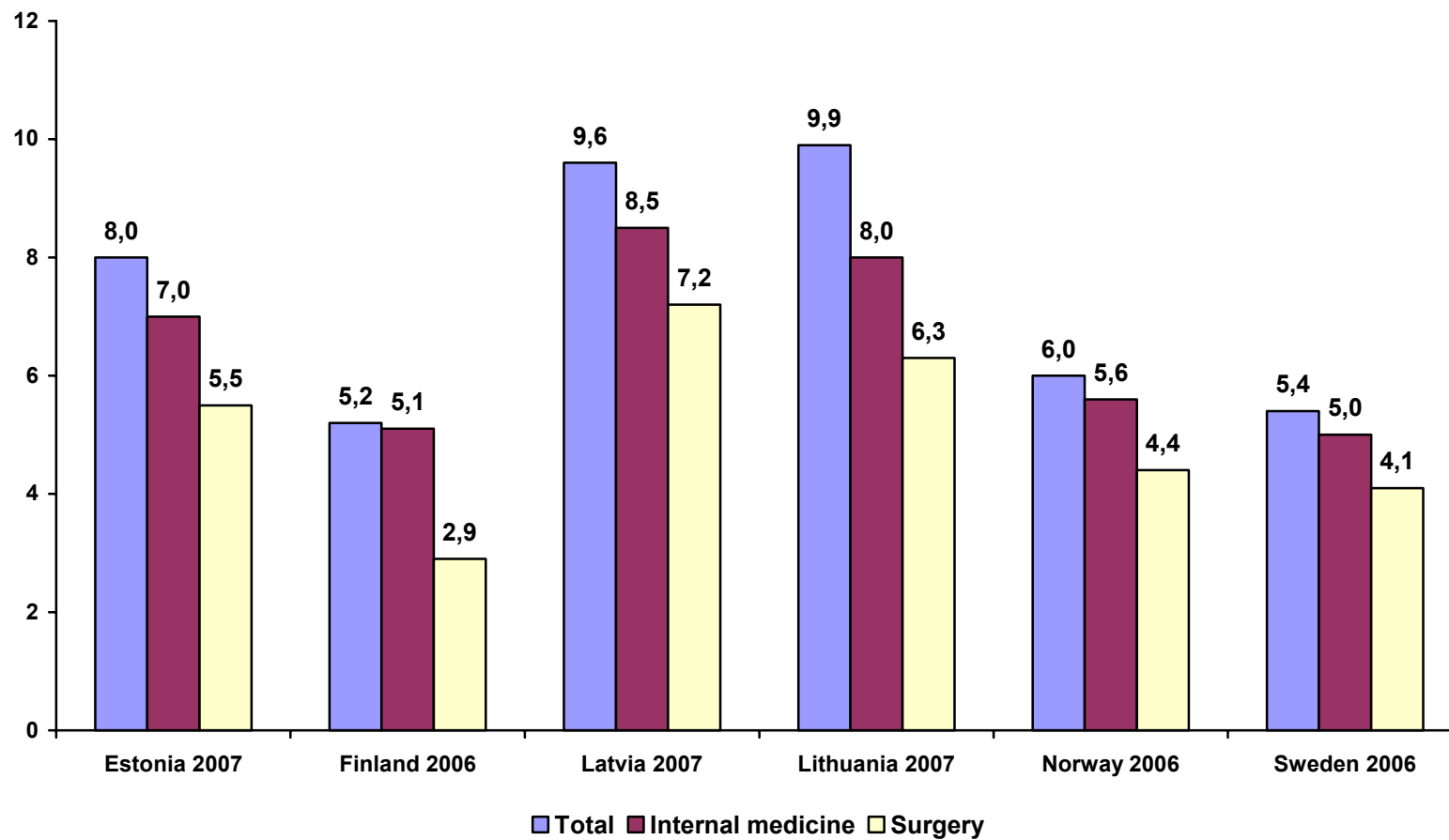


**Hospital beds utilization by speciality in 2007**

	Estonia					Latvia*					Lithuania				
	Admission per 1000 pop.	Bed occupancy		Average length of stay	Bed turnover	Admission per 1000 pop.	Bed occupancy		Average length of stay	Bed turnover	Admission per 1000 pop.	Bed occupancy		Average length of stay	Bed turnover
		Days	%				Days	%				Days	%		
TOTAL	189.1	275.5	75.5	8.0	34.5	228.5	290.9	79.7	9.6	30.9	237.8	291.0	79.7	9.9	29.5
Internal medicine	39.8	284.8	78.0	7.0	39.2	46.0	299.1	81.9	8.5	36.5	50.5	303.3	83.1	8.0	37.8
Rehabilitation	5.2	255.9	70.1	12.1	21.0	7.8	323.9	88.7	15.9	20.4	4.7	316.0	86.6	24.4	12.9
Surgery (include orthopaedics)	48.2	275.1	75.4	5.5	48.9	58.6	276.5	75.8	7.2	39.1	59.2	267.4	73.2	6.3	42.8
Oncology (include radiology)	2.8	315.4	86.4	7.7	40.0	9.8	270.8	74.2	9.5	28.8	6.5	297.7	81.6	9.4	31.7
Otolaryngology	8.8	276.4	75.7	1.6	172.9	4.4	261.8	71.7	4.9	53.2	5.7	261.5	71.6	4.1	63.6
Ophthalmology	1.2	180.9	49.6	2.9	61.9	4.1	245.8	67.3	4.6	53.6	6.9	241.8	66.3	3.2	75.5
Obstetrics	15.9	220.4	60.4	3.2	69.4	12.8	231.9	63.5	5.1	45.7	12.7	236.8	64.9	4.8	49.2
Gynaecology	11.6	209.9	57.5	2.8	74.4	18.3	266.9	73.1	3.8	70.8	15.4	215.2	59.0	3.4	63.9
Neurology	5.9	275.6	75.5	6.2	42.5	14.5	308.2	84.4	9.8	33.3	17.6	299.4	82.0	8.4	35.7
Dermatology & venerology	1.2	267.5	73.3	9.9	27.2	1.3	287.0	78.6	11.0	26.0	1.0	269.6	73.9	10.1	26.8
Infectious	5.3	241.3	66.1	6.0	40.3	11.9	250.9	68.8	5.7	44.1	7.6	258.3	70.8	5.3	48.4
Tuberculosis	0.9	238.6	65.4	52.4	4.5	3.0	268.3	73.5	37.0	7.5	1.8	319.2	87.4	66.5	4.8
Paediatrics	11.4	228.8	62.7	4.5	50.1	13.4	263.9	72.3	7.1	37.2	18.0	264.5	72.5	5.8	45.6
Psychiatry	11.0	347.8	95.3	17.2	20.1	8.4	338.6	92.8	56.7	6.1	9.0	293.9	80.5	30.1	9.8
Narcology	-	-	-	-	-	10.3	294.5	80.7	4.9	59.9	2.1	322.5	88.4	11.2	28.7
General & nursing	9.6	299.1	81.9	27.6	10.5	4.1	233.5	64.0	10.7	25.0	8.6	334.5	91.7	47.8	7.0

\* Without short-term social care beds

Average length of stay (days) in the Baltic and Nordic countries



**Health in the Baltic countries**

**Discharges by groups of diseases in 2007**

	<b>Estonia**</b>				<b>Latvia***</b>				<b>Lithuania</b>			
	children		adults		children		adults		children		adults	
	discharges per 1000 pop.	average length of stay	discharges per 1000 pop.	average length of stay	discharges per 1000 pop.	average length of stay	discharges per 1000 pop.	average length of stay	discharges per 1000 pop.	average length of stay	discharges per 1000 pop.	average length of stay
Certain infectious and parasitic diseases	19.5	3.5	4.7	16.6	20.1	6.6	6.1	21.4	19.6	5.6	5.1	26.9
Neoplasms	4.2	3.4	18.8	8.1	2.5	10.8	23.9	9.0	4.2	5.7	24.1	9.1
Diseases of the blood and blood forming organs and certain disorders involving the immune mechanisms	1.8	3.9	1.1	7.1	0.8	7.9	0.8	9.1	0.9	5.1	1.2	7.5
Endocrine, nutritional and metabolic diseases	1.8	5.5	3.7	8.6	2.1	6.8	4.6	7.5	2.6	6.4	4.6	9.4
Mental disorders and behavioural disorders	5.9	8.8	13.0	16.2	9.5	19.7	22.0	22.4	5.1	12.5	12.9	25.9
Diseases of the nervous system	7.1	6.6	4.9	10.1	9.6*	8.1*	13.7*	7.2*	6.1	6.6	14.4	9.8
Diseases of the eye and adnexa	0.8	1.6	1.2	3.2	-	-	-	-	3.2	4.9	7.2	3.2
Diseases of the ear and mastoid process	5.6	3.2	0.9	4.0	-	-	-	-	2.9	5.8	1.5	7.3
Diseases of the circulatory system	1.8	3.1	39.2	10.6	1.7	4.1	47.3	8.9	2.5	5.0	56.5	13.1
Diseases of the respiratory system	54.1	3.5	14.2	5.5	70.9	3.4	13.4	8.9	63.8	5.5	14.7	9.5
Diseases of the digestive system	11.2	2.9	17.3	5.3	19.0	4.5	19.2	6.8	16.9	4.0	18.8	7.1
Diseases of the skin and subcutaneous tissue	3.6	3.7	3.2	8.7	5.9	5.6	4.0	8.4	5.9	4.3	4.2	8.7
Diseases of the musculo-skeletal and connective tissue	3.3	4.4	13.9	7.3	5.4	11.3	18.8	10.0	4.0	6.4	12.7	9.0
Diseases of the genitourinary system	6.3	4.3	12.1	4.6	7.4	6.4	16.9	5.0	6.6	5.4	18.3	4.5
Pregnancy, childbirth and puerperium	0.1	3.4	38.9	3.2	3.3	4.2	25.0	4.6	2.4	4.0	22.3	4.1
Certain conditions originating in perinatal period	17.0	7.7	-	-	16.2	7.3	-	-	17.6	6.6	-	-
Congenital malformations, deformations and chromosomal abnormalities	8.3	5.9	0.6	5.3	6.0	8.0	0.6	6.3	7.0	5.6	0.8	3.7
Symptoms, signs and abnormal clinical and laboratory findings, not elsewhere classified	4.1	3.3	1.3	3.9	0.7	3.6	0.2	5.2	7.1	20.2	1.7	3.6
Injury, poisoning and certain other consequences of external causes	12.2	3.3	11.9	9.7	21.5	4.5	21.1	8.0	19.1	4.1	19.9	9.7
<b>TOTAL</b>	<b>172.0</b>	<b>4.3</b>	<b>185.0</b>	<b>8.2</b>	<b>202.6</b>	<b>6.9</b>	<b>237.5</b>	<b>9.5</b>	<b>203.2</b>	<b>6.0</b>	<b>242.7</b>	<b>10.2</b>

\* Diseases of the nervous system and sense organs

\*\* Estonia – data of 2006

\*\*\*Without short term social care beds

Surgical operations in hospitals in 2007

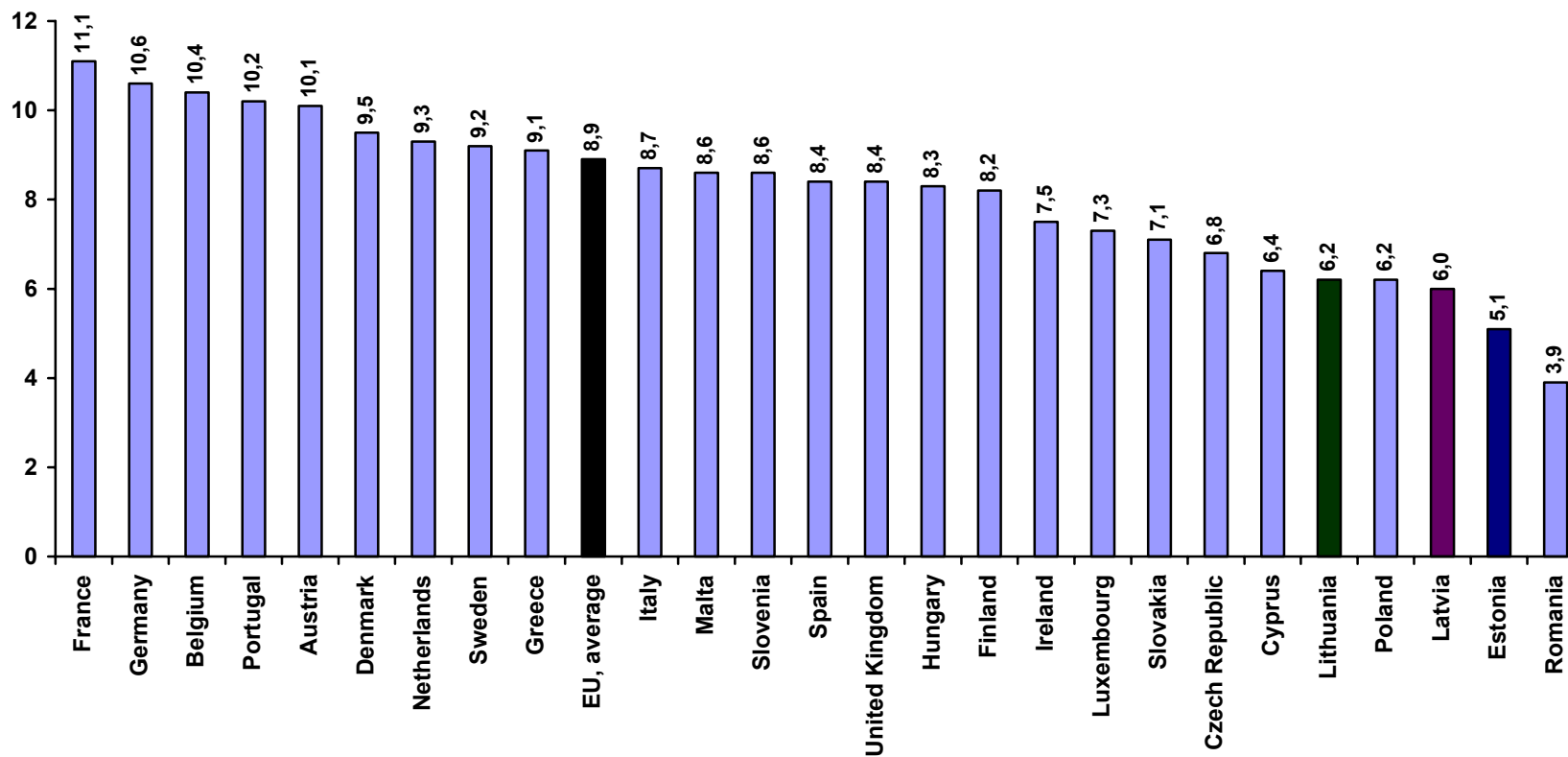
	Estonia			Latvia			Lithuania		
	Number	Per 100,000 population	%	Number	Per 100,000 population	%	Number	Per 100,000 population	%
TOTAL	85 032	6338.0	100	164 467	7225.8	100.0	288 590	8549.2	100.0
On the nervous system	2 577	192.1	3.0	3 528	155.0	2.1	8 112	240.3	2.8
On the endocrine system	616	45.9	0.7	2 059	90.5	1.2	2 228	66.0	0.8
On the eye	1 731	129.0	2.0	7 531	330.9	4.6	21 366	633.0	7.4
On the ear, throat and nose	12 965	966.3	15.2	8 837	388.3	5.4	22 977	680.7	8.0
On the respiratory system	1 533	114.3	1.8	1 908	83.8	1.2	3 640	107.8	1.3
On the heart	3 749	279.4	4.4	9 895	434.7	6.0	3 476	103.0	1.2
On the vessels	3 874	288.7	4.6	4 916	216.0	2.9	12 300	364.4	4.3
On the digestive system	12 245	912.7	14.4	19 220	844.4	11.7	40 519	1200.3	14.0
On the kidneys and ureter	2 851	212.5	3.4	5 391*	236.9*	3.3*	7 328	217.1	2.5
On the prostate**	1 071	173.3	1.3	-	-	-	9 159	582.6	3.2
On the female genital organs***	8 764	1210.8	10.3	25 916	2111.9	15.7	37 394	2073.3	13.0
Obstetrical operations***	11 175	1543.8	13.1	23 780	1937.9	14.4	28 640	1587.9	9.9
On the musculoskeletal system	14 473	1078.7	17.0	28 167	1237.5	17.1	46 117	1366.2	16.0
On the breast	945	70.4	1.1	2 366	103.9	1.4	3 357	99.4	1.2
On the skin and subcutaneous tissue	5 452	406.4	6.4	13 175	578.8	8.2	29 191	864.8	10.1
Other procedures	1 011	75.4	1.2	13 169	578.6	8.1	12 786	378.8	4.4

\*) Data for Latvia - including operations on prostate

\*\* ) Per 100,000 male population

\*\*\* ) Per 100,000 female population

Total health care expenditure as % of GDP in EU member states



Note: WHO data 2004 - 2007; data for Estonia, Latvia and Lithuania - 2006

\*Estonia and Lithuania – calculated using the SHA (OECD)



### Obstetric Definitions

Live birth -	Foetus that after complete expulsion or extraction from its mother breathes or shows any other evidence of life, irrespective of the duration of the pregnancy.		rate is used for international comparison including births with a weight of 1000 g or more.
Still birth -	Death prior to the complete expulsion or extraction from its mother of a product of conception after 22 weeks of gestation. Standard rate is used for international comparison including births with a weight of 1000 g or more.	Maternal death -	The death of a woman while pregnant or within 42 days after termination of pregnancy, irrespective of the duration and the site of the pregnancy, from any cause related to or aggravated by the pregnancy or its management, but not from accidental or incidental causes.
Infant death -	Live-born infant that dies during the first year of life.	Abortion -	Spontaneous or induced (legal, therapeutic, criminal) abortion is pregnancy termination or artificial extraction of the product of the conception during the first 22 weeks of gestation.
Neonatal death -	Death occurring at the age of 0 to 27 full days of life (27 days 23 hours 59 min.). The first day of life is considered as day zero.		
Early neonatal death -	Death occurring at the age of 0 to 6 full days of life (6 days 23 hours 59 min.). The first day of life is considered as day zero.	Still birth rate -	The average number of children that would be born per woman if all women lived to the end of their childbearing years and bore children according to a given set of age-specific fertility rates.
Perinatal death -	Foetal deaths and live-born infants that die at the age of 0 to 6 full days of life. Standard		

### Sources

1. Statistical Yearbook of Estonia 2008; Statistics Estonia. Tallinn, 2008
2. Statistical database on the website of Statistical Office of Estonia: <http://www.stat.ee>
3. Statistical data on the website of National Institute for Health Development: <http://www.tai.ee>
4. Demography 2007; Central Statistical Bureau of Latvia; Riga, 2008
5. Yearbook of Health Care Statistics in Latvia 2007; Health Statistics and Medical Technologies State Agency of Latvia, Health Statistics Department; Riga, 2008
6. Branch statistical overviews and databases of Health Statistics Department, Health Statistics and Medical Technologies State Agency of Latvia
7. Statistical Yearbook of Lithuania 2007; Department of Statistics to the Government of the Republic of Lithuania; Vilnius, 2008
8. Demographic Yearbook 2007; Department of Statistics to the Government of the Republic of Lithuania; Vilnius, 2008
9. Health Statistics of Lithuania 2007; Lithuanian Health Information Centre; Vilnius, 2008
10. Health for All database, WHO Regional Office for Europe