



**National Institute for Health Development of Estonia,
Department of Health Statistics**

The National Health Service of Latvia

**Health Information Centre,
Institute of Hygiene, Lithuania**

Health in the Baltic Countries

2010

19th edition

2011

CONTENTS

Preface.....	5
Resident population.....	5
General data.....	6
Population by age.....	7
Trends of demographics indicators.....	8
Resident population by age and gender.....	9
Natality, mortality and natural increase per 1000 population.....	10
Life expectancy at birth in EU member states.....	11
Life expectancy at 45 years of age in EU member states.....	12
Death cause per 100,000 population.....	13
Main cause of death.....	14
Age-standardised death rates.....	15
Selected causes of death per 100,000 population.....	18
Infant mortality per 1000 live births.....	19
Structure of infant mortality in percentage.....	20
Infant mortality by cause per 10,000 live births.....	21
Perinatal, neonatal and maternal mortality.....	21
Births rate by age of mother.....	22
Abortions.....	23
Selected results of health behaviour survey.....	24
Health facilities.....	25
Practising physicians by speciality.....	26
Hospital beds by speciality.....	27
Selected notifiable diseases per 100,000 population.....	28
Incidence of malignant neoplasms by main sites.....	29
Hospital beds use by speciality.....	30
Average length of stay (days) in the Baltic and Nordic countries.....	31
Discharges by groups of diseases.....	32
Surgical operation in the hospitals.....	33
Sales of medical products by ATC groups.....	34
Health care expenditures.....	35
Total health care expenditures as % of GDP in EU member states.....	36
Obstetrics definitions.....	37
Sources.....	38
Further information.....	39

Symbols used in the tables:

Zero or no applicable	-
Data not available	...

Preface

“Health in the Baltic Countries 2010” is the nineteenth edition of the series and is aimed at providing a basis for the comparison of health statistics of the three Baltic States – namely Estonia, Latvia and Lithuania.

The publication is targeted at health professionals, policy and opinion formers, those involved in research, students of health and any of the general public interested in the health of their fellow citizens.

The most important sources of data for this publication were the annual statistical reports of the various medical institutions as well as health databases and registries. Some data was taken from official publications and the web pages of the national statistics offices of the Baltic States. *The Health for All database* of the World Health Organisation and NOMESCO publication entitled *Health Statistics in the Nordic Countries 2008* were used as sources of information for tables containing data from other European countries.

Resident population on 01.01.2011

	Estonia	Latvia	Lithuania
Population (thousand)	1340.2	2229.6	3244.6
Per 1 km ²	30.9	34.5	49.7
Urban (thousand)	930.6	1505.5	2171.2
%	69.4	67.5	66.9
Rural (thousand)	409.6	724.2	1073.4
%	30.6	32.5	33.1
Males (thousand)	617.8	1029.4	1507.3
%	46.1	46.2	46.5
Females (thousand)	722.4	1200.3	1737.3
%	53.9	53.8	53.5
Below working age (%)	16.3	13.7	16.2
Working age (%)	64.3	65.8	63.7
Above working age (%)	19.4	20.5	20.1
<i>Working age</i>			
<i>Males</i>	<i>16-63</i>	<i>15 - 61</i>	<i>16-62.5</i>
<i>Females</i>	<i>16-61</i>	<i>15 - 61</i>	<i>16-60</i>

Health in the Baltic countries

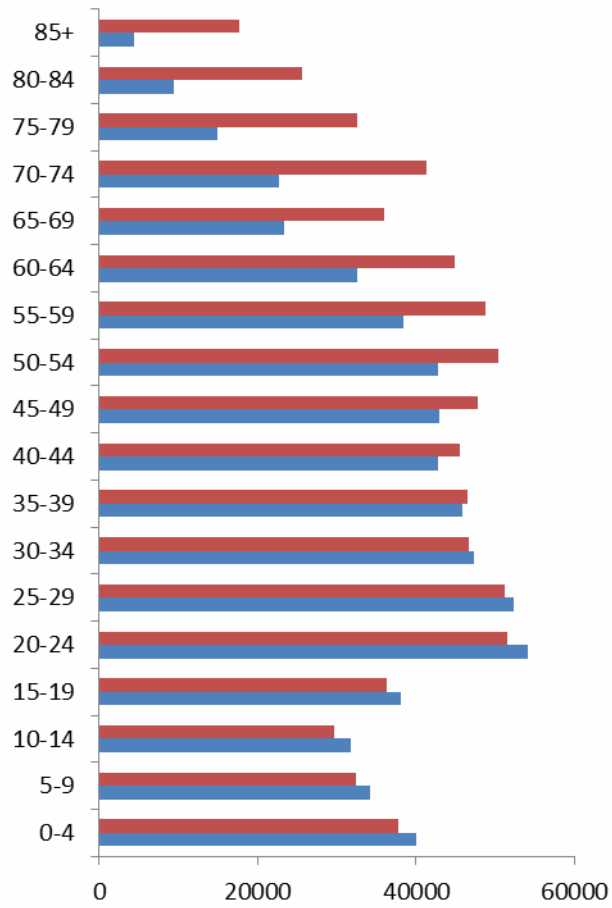
General data

	Estonia	Latvia	Lithuania
Official name of the state	Republic of Estonia (Eesti Vabariik)	Republic of Latvia (Latvijas Republika)	Republic of Lithuania (Lietuvos Respublika)
Independence Day	24 February (1918)	18 November (1918)	16 February (1918)
Governing body of the state	Parliament (Riigikogu), 101 members, elected for a period of 4 years	Parliament (Saeima), 100 members, elected for a period of 4 years	Parliament (Seimas), 141 members, elected for a period of 4 years
Governmental structure	Republic, the President is elected for the period of 5 years	Republic, the President is elected for the period of 4 years	Republic, the President is elected for the period of 5 years
Area (thousand km ²)	45.2	64.6	65.3
Major islands	Saaremaa, 2671 km ² Hiiumaa, 989 km ² Muhu, 198 km ²	-	-
Major rivers	Võhandu, 162 km (through lake Tamula) Pärnu, 144 km Põltsamaa, 135 km	Daugava, 1005 km Gauja, 452 km Venta, 346 km	Nemunas, 937.4 km Neris, 509.5 km Venta, 346 km
Major lakes	Peipsi, 3555 km ² (in Estonia 1529 km ²) Võrtsjärv, 271 km ² Narva veehoidla (artificial lake) 191 km ² (in Estonia 38 km ²)	Lubāns, 80.7 km ² Rāzna, 57.6 km ² Engure, 40.5 km ²	Drūkšiai, 44.8 km ² Dysnai, 24.4 km ² Dusia, 23.3 km ²
The highest point	Suur Munamägi, 318 m	Gaiziņkalns, 311.6 m	Juozapinė, 293.6 m
Average daily temperature in January 2010	- 11.4° C	- 11.5° C	- 10.5 °C
Average daily temperature in July 2010	+ 22.0° C	+ 21.5° C	+ 21.5 °C
Average daily temperature 2010	+ 5.1° C	+ 5.6° C	+ 6.3 °C
Administrative units at the beginning of 2011	15 counties, 33 cities, 14 cities without municipal status, 193 rural municipalities	76 cities and towns, 110 counties	10 counties, 60 municipalities, 103 cities and towns,
Capital, resident population (thousand) at the beginning of 2011	Tallinn 400.3	Riga 700.1	Vilnius 554.1
State language	Estonian	Latvian	Lithuanian
Currency	Estonian kroon=100 sents* 1 EEK = 0.064 EUR	Latvian lats=100 santims 1 LVL = 1.423 EUR	Lithuanian lits=100 centas 1 LTL = 0.28962 EUR

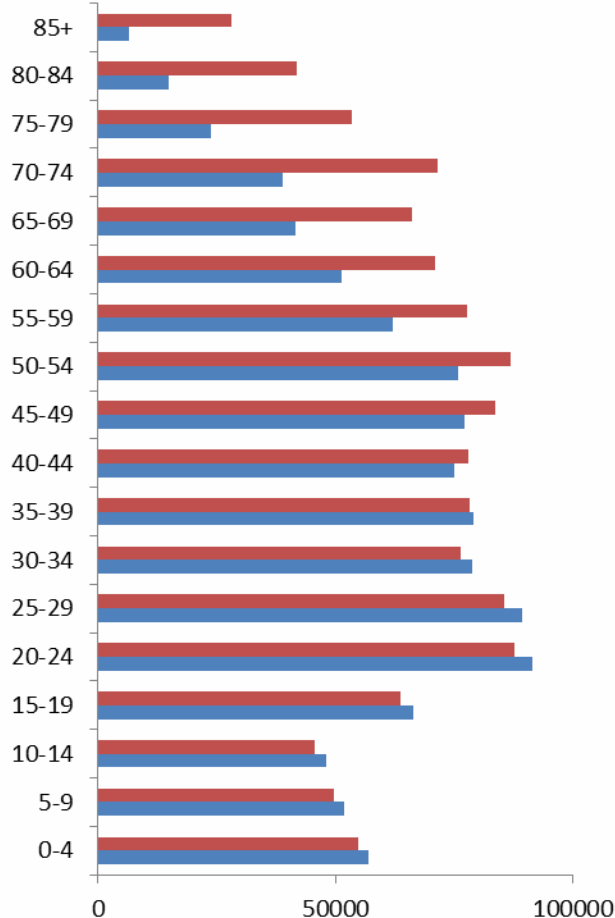
* On 1 January 2011, Estonia replaced the kroon with the euro.

Population by age at the beginning of 2011

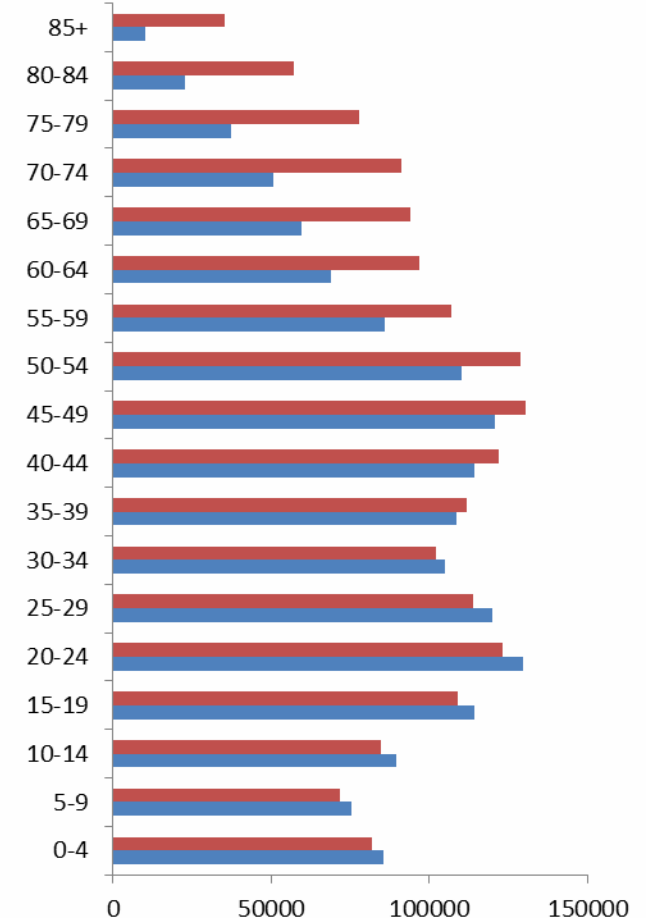
Estonia



Latvia



Lithuania

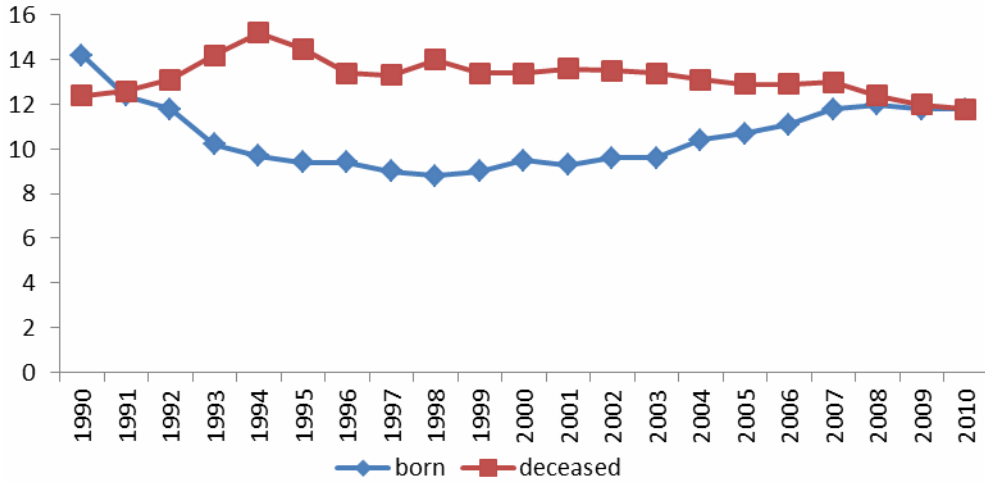


Female Male

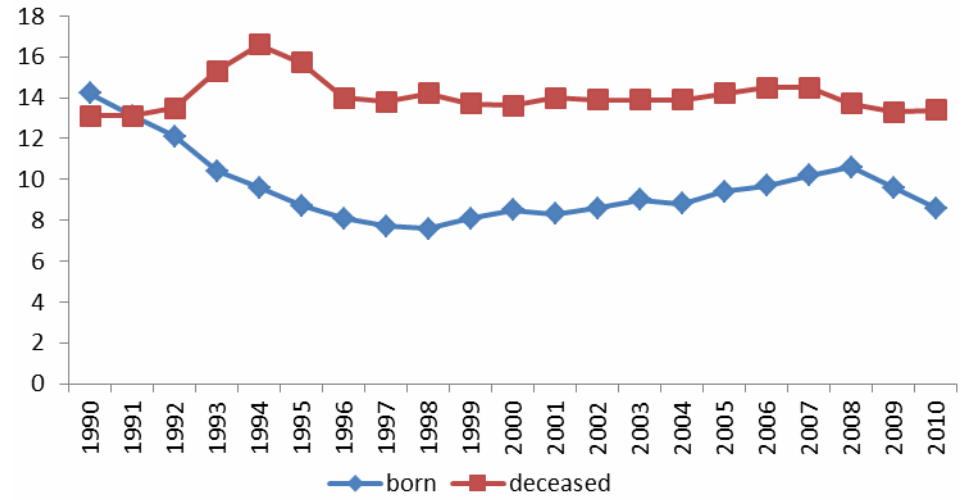
Health in the Baltic countries

Trends in demographics indicators Per 1000 population

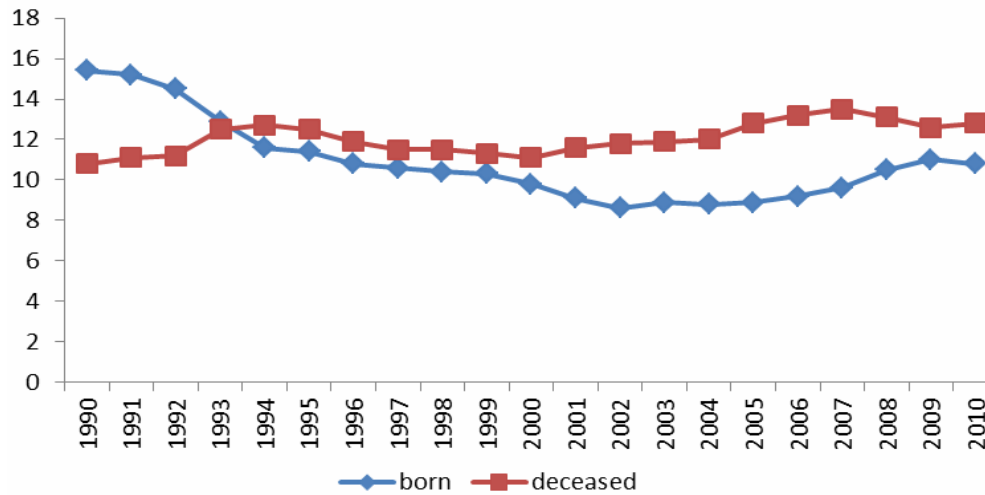
Estonia



Latvia



Lithuania



Health in the Baltic countries

Resident population by age and gender at 01.01.2011

	Estonia						Latvia						Lithuania					
	Total		Males		Females		Total		Males		Females		Total		Males		Females	
	Number	%	Number	%	Number	%	Number	%	Number	%	Number	%	Number	%	Number	%	Number	%
Total	1340194	100.0	617757	100.0	722437	100.0	2229641	100.0	1029391	100.0	1200250	100.0	3244601	100.0	1507268	100.0	1737333	100.0
0-4	77893	5.8	40081	6.5	37812	5.2	111559	5.0	56861	5.5	54698	4.6	167184	5.2	85525	5.7	81659	4.7
5-9	66446	5.0	34119	5.5	32327	4.5	101407	4.5	51865	5.0	49542	4.1	146877	4.5	75247	5.0	71630	4.1
10-14	61361	4.6	31669	5.1	29692	4.1	93563	4.2	47923	4.7	45640	3.8	173834	5.4	89399	5.9	84435	4.9
15-19	74379	5.5	38050	6.2	36329	5.0	130073	5.8	66345	6.4	63728	5.3	223075	6.9	114173	7.6	108902	6.3
20-24	105663	7.9	54120	8.8	51543	7.1	179273	8.0	91429	8.9	87844	7.3	252861	7.8	129743	8.6	123118	7.1
25-29	103380	7.7	52273	8.5	51107	7.1	174940	7.8	89437	8.7	85503	7.1	233616	7.2	119929	8.0	113687	6.5
30-34	93927	7.0	47308	7.7	46619	6.5	155120	7.0	78834	7.7	76286	6.4	206981	6.4	104809	7.0	102172	5.9
35-39	92310	6.9	45850	7.4	46460	6.4	157539	7.1	79177	7.7	78362	6.5	220128	6.8	108448	7.2	111680	6.4
40-44	88181	6.6	42712	6.9	45469	6.3	153184	6.9	75121	7.3	78063	6.5	236092	7.3	114317	7.6	121775	7.0
45-49	90802	6.8	42987	7.0	47815	6.6	160724	7.2	77174	7.5	83550	7.0	251011	7.7	120589	8.0	130422	7.5
50-54	93194	7.0	42774	6.9	50420	7.0	162968	7.3	75946	7.4	87022	7.3	239128	7.4	110225	7.3	128903	7.4
55-59	87113	6.5	38342	6.2	48771	6.8	139652	6.3	62007	6.0	77645	6.5	192616	5.9	85765	5.7	106851	6.2
60-64	77423	5.8	32503	5.3	44920	6.2	122513	5.5	51399	5.0	71114	5.9	165429	5.1	68721	4.6	96708	5.6
65-69	59349	4.4	23367	3.8	35982	5.0	107718	4.8	41521	4.0	66197	5.5	153450	4.7	59578	4.0	93872	5.4
70-74	64040	4.8	22680	3.7	41360	5.7	110569	5.0	38955	3.8	71614	6.0	142033	4.4	50746	3.4	91287	5.3
75-79	47476	3.5	14984	2.4	32492	4.5	77441	3.5	23882	2.3	53559	4.5	114993	3.5	37226	2.5	77767	4.5
80-84	35014	2.6	9477	1.5	25537	3.5	56795	2.5	14962	1.5	41833	3.5	79823	2.5	22681	1.5	57142	3.3
85+	22128	1.7	4409	0.7	17719	2.5	34603	1.6	6553	0.6	28050	2.3	45470	1.4	10147	0.7	35323	2.0
Unknown	115	0.01	52	0.01	63	0.01	-	-	-	-	-	-	-	-	-	-	-	-

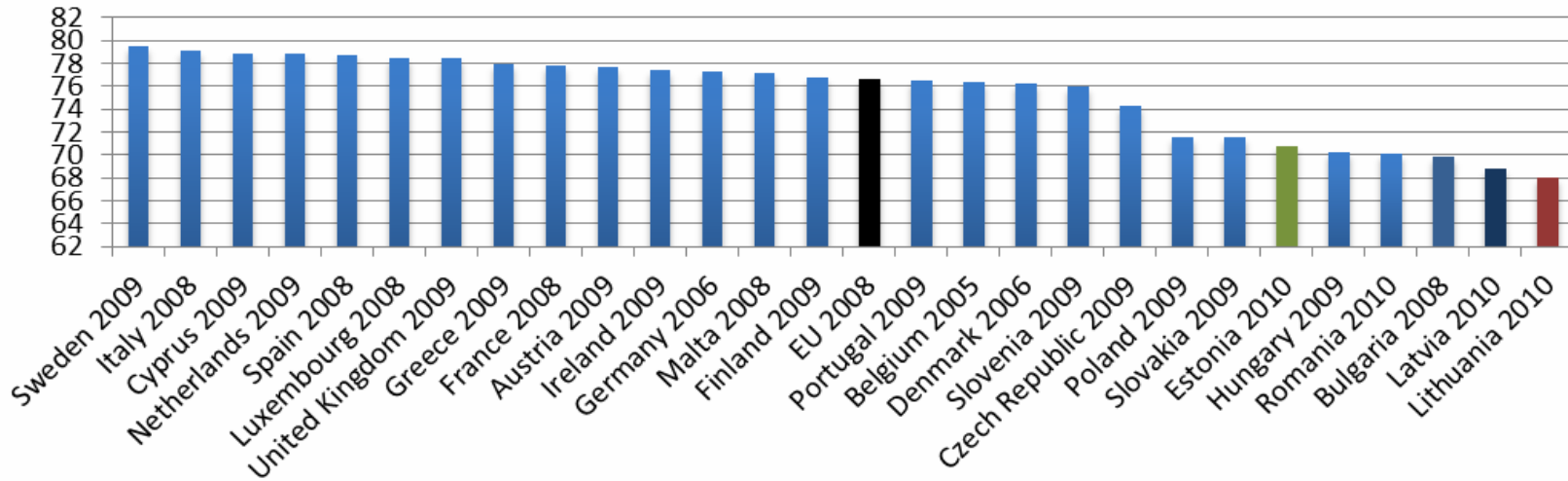
Health in the Baltic countries

Natality, mortality and natural increase per 1000 population

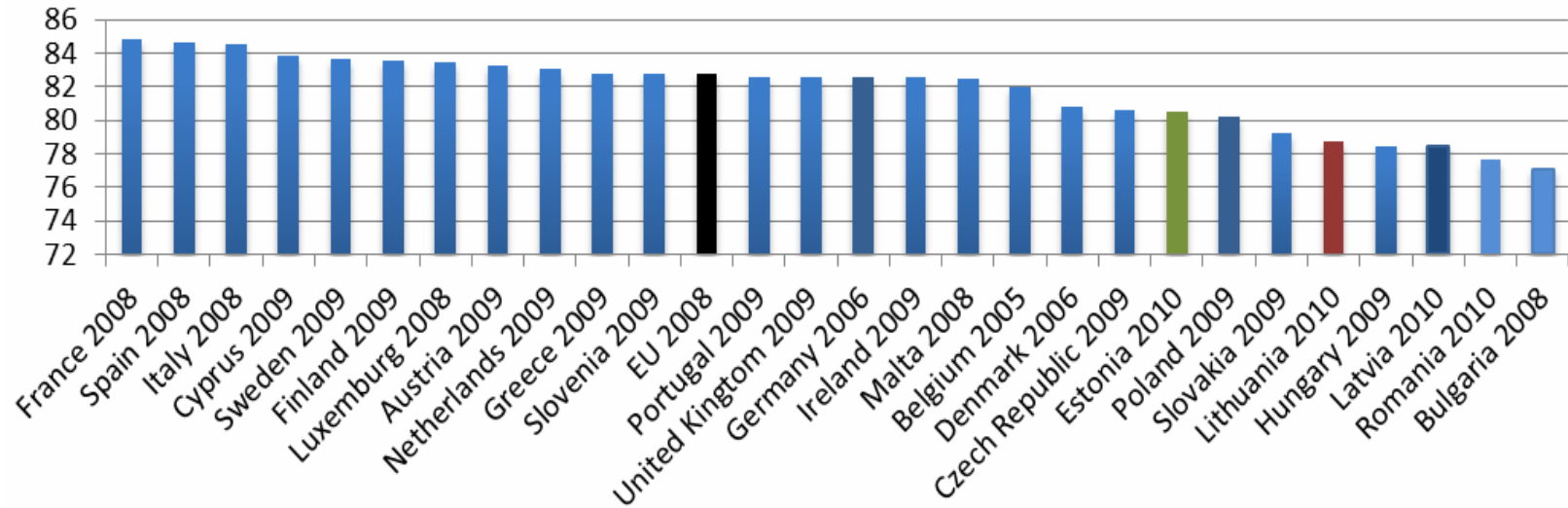
Years	Estonia			Latvia			Lithuania		
	Natality	Mortality	Natural increase	Natality	Mortality	Natural increase	Natality	Mortality	Natural increase
1965	14.8	10.6	4.2	13.8	10.1	3.7	18.1	7.9	10.2
1970	16.0	11.2	4.8	14.6	11.3	3.3	17.7	8.9	8.8
1975	15.0	11.6	3.4	14.2	12.2	2.0	15.7	9.5	6.2
1980	14.9	12.4	2.5	14.1	12.8	1.3	15.2	10.5	4.7
1985	15.5	12.6	2.9	15.4	13.2	2.2	16.5	11.1	5.4
1990	14.2	12.4	1.8	14.2	13.1	1.1	15.4	10.8	4.6
1991	12.4	12.6	-0.2	13.1	13.1	0.0	15.2	11.1	4.1
1992	11.8	13.1	-1.3	12.1	13.5	-1.4	14.5	11.2	3.3
1993	10.2	14.2	-4.0	10.4	15.3	-4.9	12.9	12.5	0.4
1994	9.7	15.2	-5.5	9.6	16.6	-7.0	11.6	12.7	-1.1
1995	9.4	14.5	-5.1	8.7	15.7	-7.0	11.4	12.5	-1.1
1996	9.4	13.4	-4.0	8.1	14.0	-5.9	10.8	11.9	-1.1
1997	9.0	13.3	-4.3	7.7	13.8	-6.1	10.6	11.5	-0.9
1998	8.8	14.0	-5.2	7.6	14.2	-6.6	10.4	11.5	-1.1
1999	9.0	13.4	-4.4	8.1	13.7	-5.6	10.3	11.3	-1.0
2000	9.5	13.4	-3.9	8.5	13.6	-5.1	9.8	11.1	-1.3
2001	9.3	13.6	-4.3	8.3	14.0	-5.7	9.1	11.6	-2.5
2002	9.6	13.5	-3.9	8.6	13.9	-5.3	8.6	11.8	-3.2
2003	9.6	13.4	-3.8	9.0	13.9	-4.9	8.9	11.9	-3.0
2004	10.4	13.1	-2.7	8.8	13.9	-5.1	8.8	12.0	-3.2
2005	10.7	12.9	-2.2	9.4	14.2	-4.8	8.9	12.8	-3.9
2006	11.1	12.9	-1.8	9.7	14.5	-4.7	9.2	13.2	-4.0
2007	11.8	13.0	-1.2	10.2	14.5	-4.3	9.6	13.5	-3.9
2008	12.0	12.4	-0.4	10.6	13.7	-3.1	10.5	13.1	-2.6
2009	11.8	12.0	-0.2	9.6	13.3	-3.7	11.0	12.6	-1.6
2010	11.8	11.8	0.03	8.6	13.4	-4.8	10.8	12.8	-2.0

Life expectancy at birth in EU member states

Males

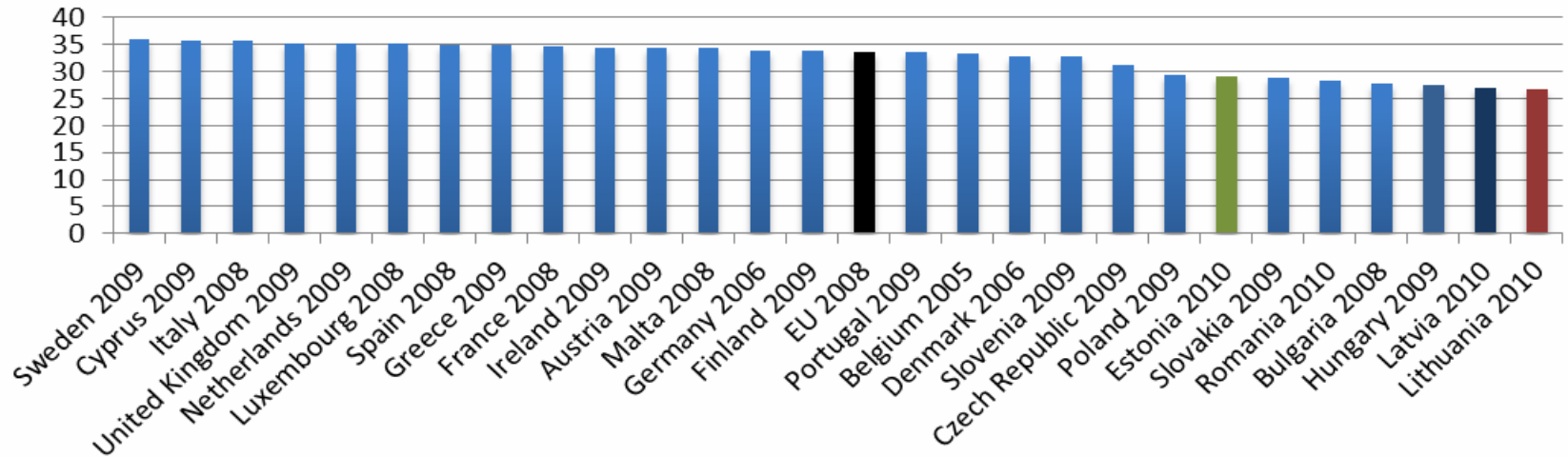


Females

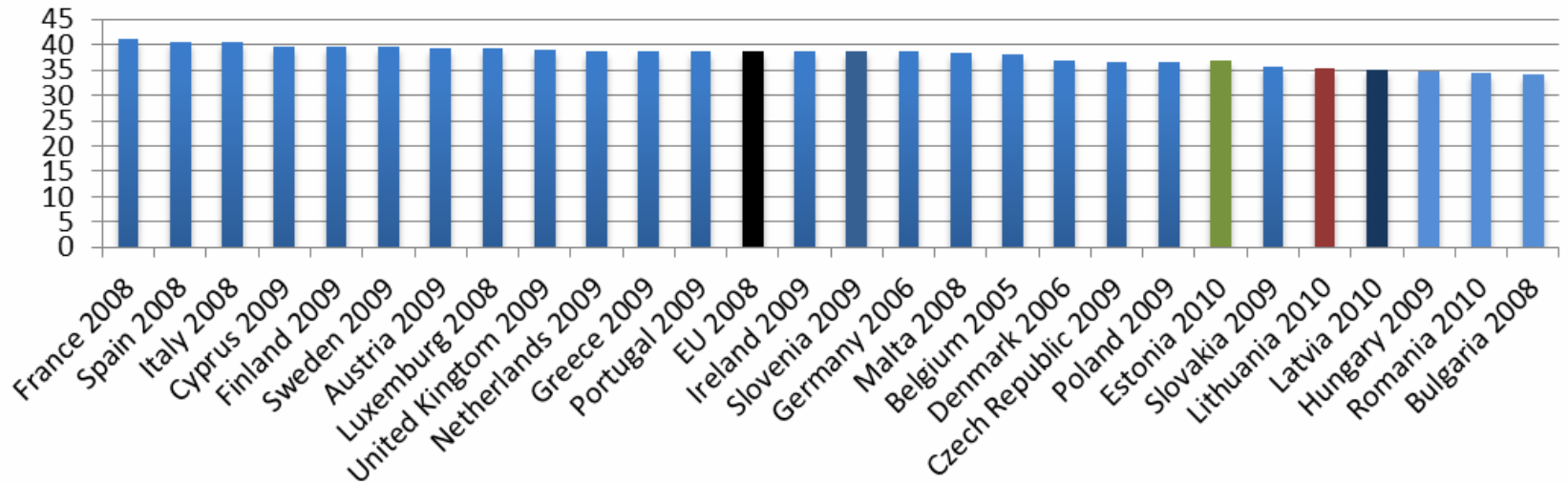


Life expectancy at 45 years of age in EU member states

Males



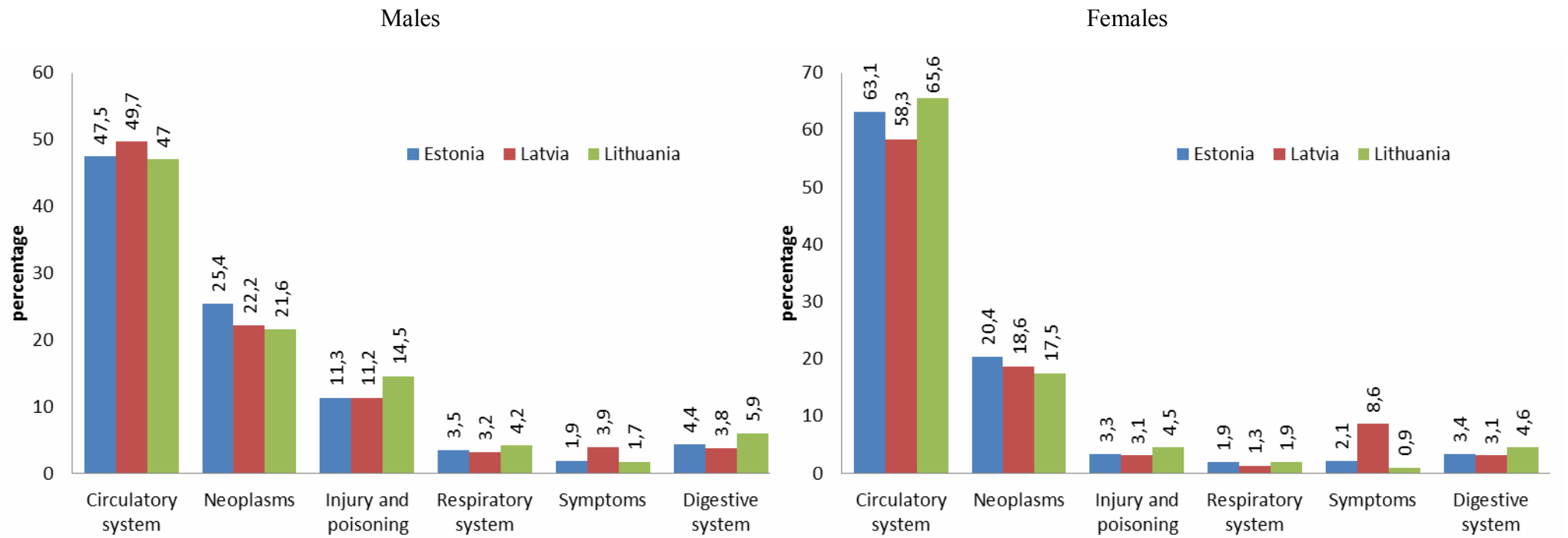
Females



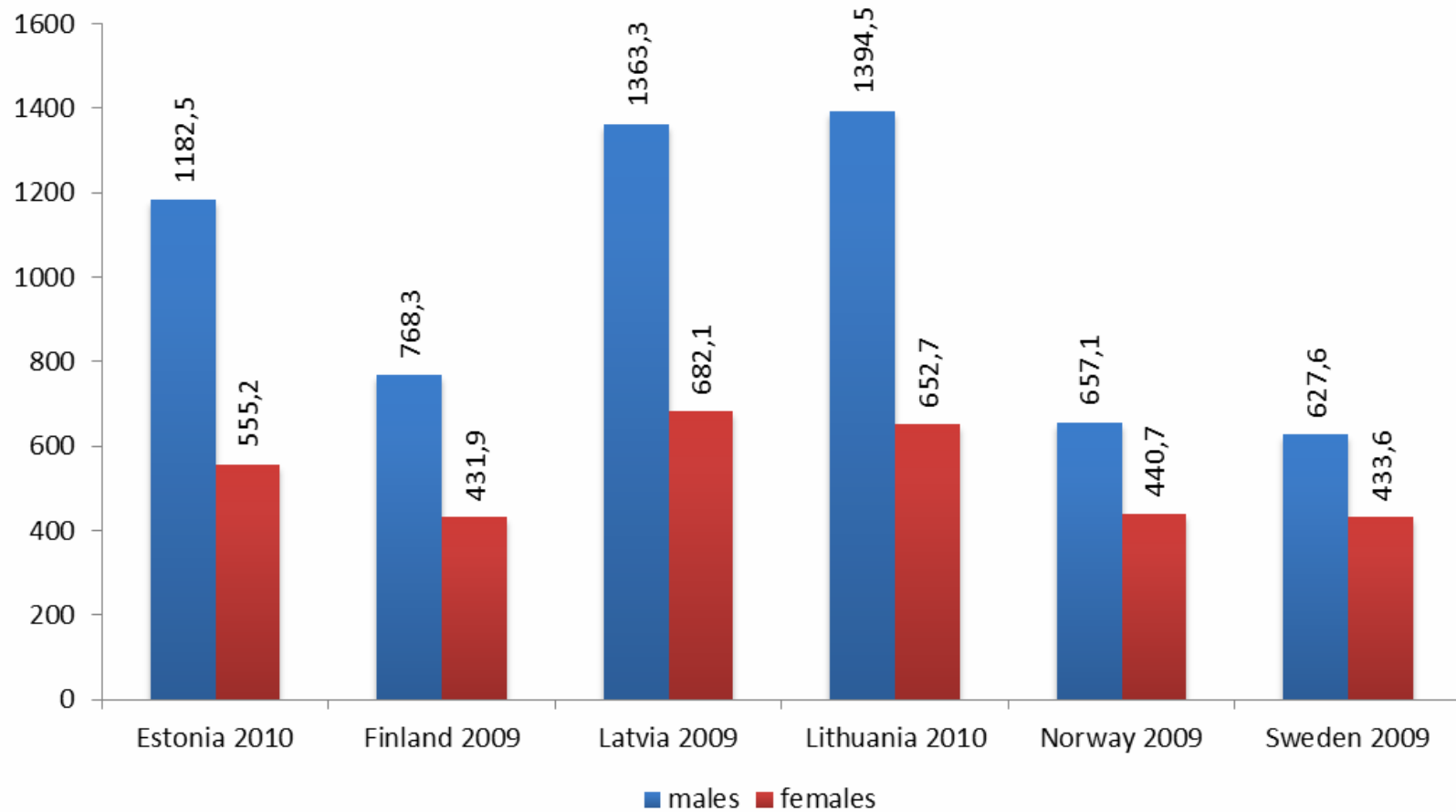
Deaths by cause per 100,000 population in 2010

Causes of death	Estonia			Latvia			Lithuania		
	Total	Males	Females	Total	Males	Females	Total	Males	Females
Certain infectious and parasitic diseases	9.0	13.9	4.7	11.0	15.1	7.5	14.6	20.7	9.4
Neoplasms	269.0	318.7	226.5	273.6	313.9	239.1	251.2	304.2	205.1
Diseases of the blood and blood-forming organs and certain disorders involving the immune mechanisms	0.9	1.1	0.7	1.3	0.9	1.7	1.4	1.2	1.6
Endocrine, nutritional and metabolic diseases	13.2	12.6	13.7	26.3	18.7	32.8	9.5	8.6	10.3
Mental and behavioural disorders	9.6	14.4	5.5	11.2	13.1	9.6	2.6	2.5	2.8
Diseases of the nervous system and sensory organs	19.0	17.0	20.6	11.7	13.8	10.0	18.2	20.5	16.1
Diseases of the circulatory system	652.9	597.1	700.6	727.1	701.5	749.0	718.8	663.2	767.2
Diseases of the respiratory system	31.7	43.6	21.6	29.6	45.3	16.2	38.9	58.6	21.9
Diseases of the digestive system	45.9	55.5	37.6	46.7	54.1	40.4	67.5	83.7	53.3
Diseases of the skin and subcutaneous tissue	1.3	1.1	1.4	2.0	1.9	2.1	1.2	1.2	1.2
Diseases of the musculoskeletal system and connective tissue	3.7	2.4	4.7	4.0	2.4	5.4	2.9	2.2	3.5
Diseases of the genitourinary system	9.0	8.9	9.1	13.7	12.3	14.8	9.7	8.6	10.6
Pregnancy, childbirth and puerperium	-	-	0.1	-	-	0.3	-	-	0.1
Certain conditions originating in perinatal period	1.7	2.6	1.0	2.6	2.9	2.3	2	2.2	1.8
Congenital malformations, deformations and chromosomal abnormalities	2.4	1.9	2.8	2.9	3.0	2.7	3.1	3.6	2.7
Symptoms, signs and abnormal clinical and laboratory findings, not elsewhere classified	23.7	23.6	23.7	85.0	54.9	110.8	16.7	24.4	10.1
Injury, poisoning and certain other consequences of external causes	84.7	141.4	36.3	94.1	157.3	39.9	123.1	204.6	52.3
TOTAL	1177.6	1255.9	1110.7	1343.0	1411.0	1284.7	1281.5	1409.9	1170.0

Main causes of death in 2010



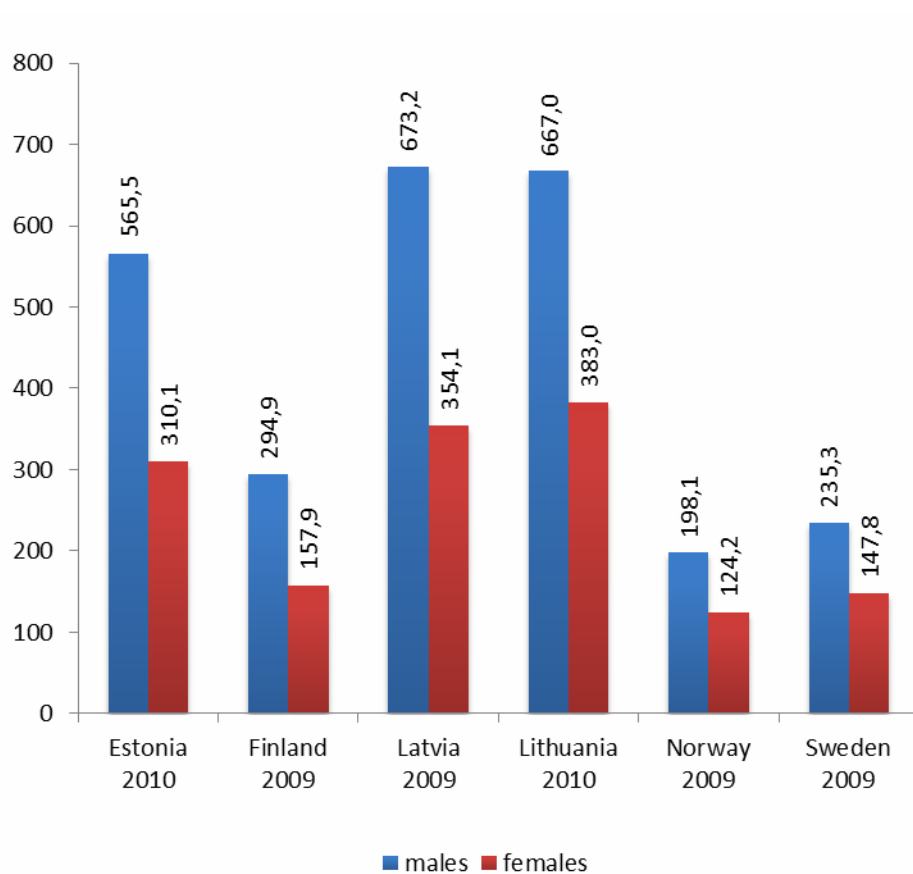
Age-standardised death rates
(per 100,000 European standard population)



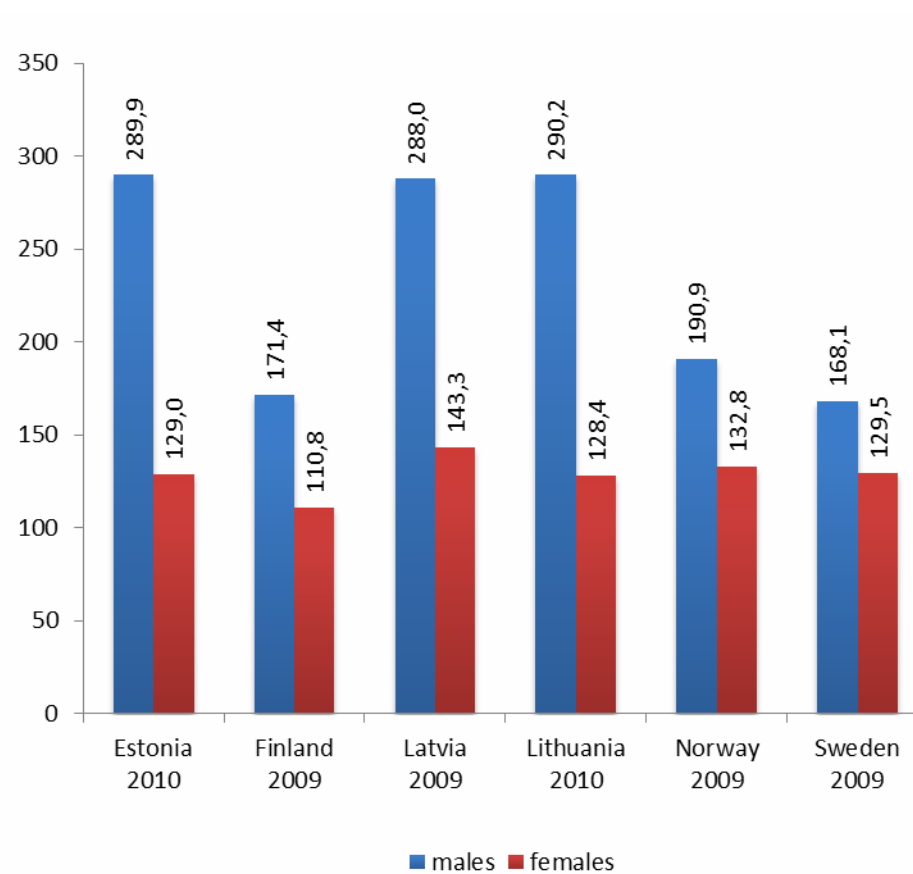
Health in the Baltic countries

Age-standardised death rates (per 100,000 European standard population)

diseases of circulatory system



malignant neoplasms

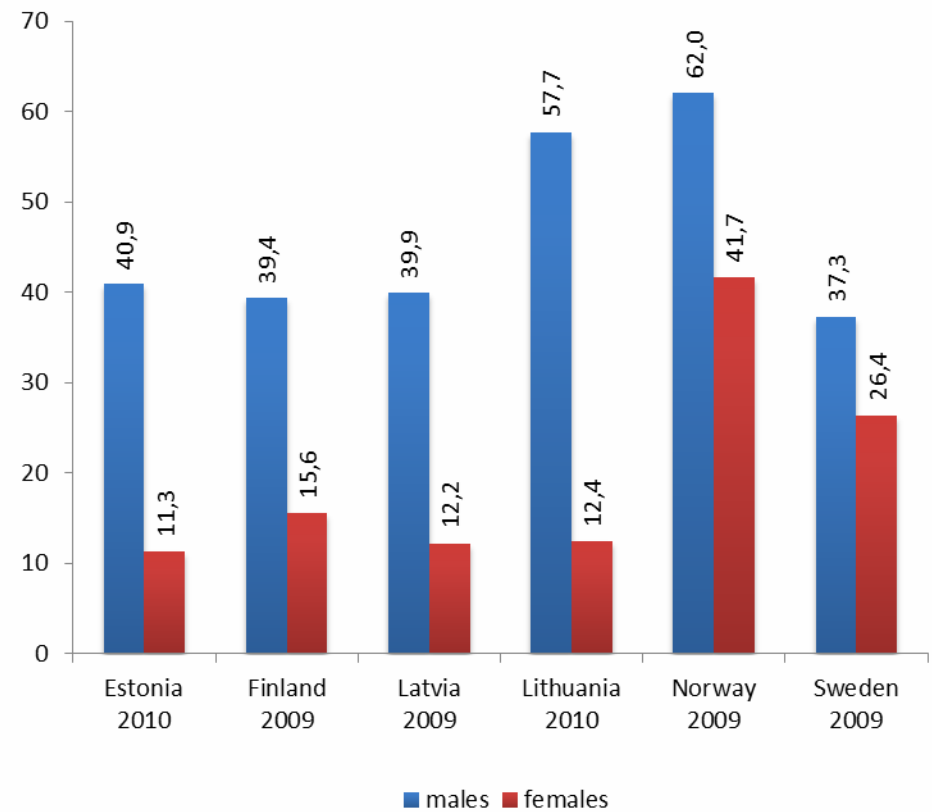
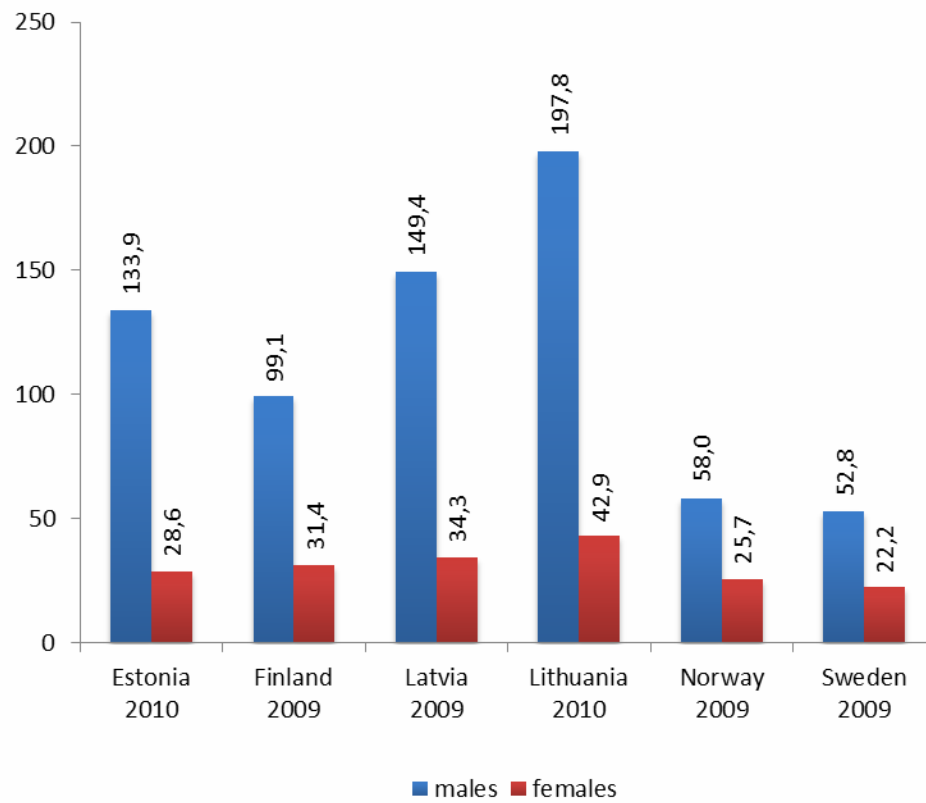


Health in the Baltic countries

Age-standardised death rates (per 100,000 European standard population)

injuries, poisoning and other consequences of external causes

diseases of respiratory system



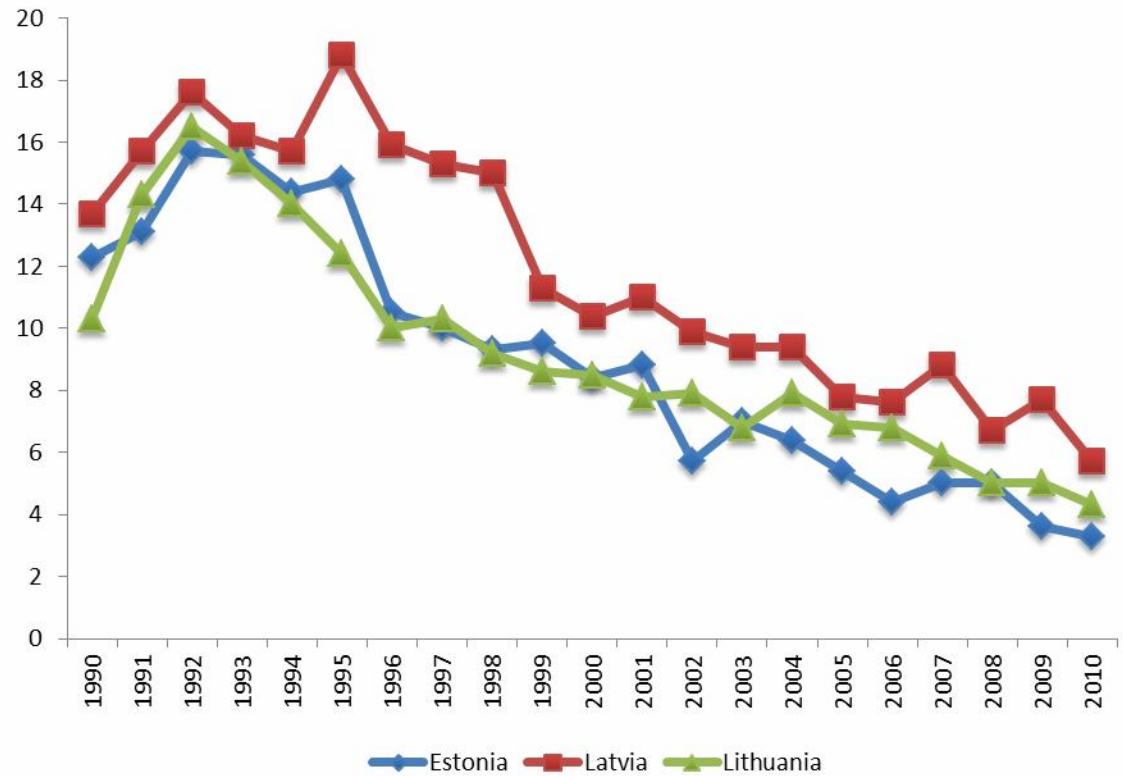
Health in the Baltic countries

Selected causes of deaths per 100,000 population in 2010

Causes of death	ICD-10 codes	Estonia			Latvia			Lithuania		
		Total	Males	Females	Total	Males	Females	Total	Males	Females
Tuberculosis	A15-A19	2.7	5.0	0.7	3.5	6.2	1.2	6.7	11.7	2.3
AIDS	B20-B24	3.1	5.2	1.4	2.6	4.0	1.4	0.5	1.0	0.2
Stomach cancer	C16	21.6	26.1	17.7	22.2	27.5	17.8	20.7	26.9	15.3
Colon cancer	C18	17.7	18.0	17.4	16.5	15.2	17.6	15.9	15.9	16.0
Rectum cancer	C19-C21	12.8	14.4	11.5	13.9	15.6	12.4	13.1	15.5	10.9
Trachea, bronchus and lung cancer	C33-C34	47.8	81.9	18.7	44.9	79.1	15.6	39.6	73.0	10.6
Breast cancer	C50	16.9	0.0	31.4	19.0	0.2	35.2	17.6	0.3	32.7
Cervix uteri cancer	C53	-	-	9.8	-	-	11.8	-	-	13.8
Prostate cancer	C61	-	41.5	-	-	35.1	-	-	37.8	-
Diabetes	E10-E14	11.3	11.2	11.5	24.0	17.2	29.9	8.4	7.7	9.1
Ischaemic heart disease	I20-I25	322.6	307.7	335.3	383.7	389.2	379.0	459.8	429.1	486.4
of which myocardial infarction	I21-I22	47.9	54.9	41.9	62.2	74.5	51.6	38.8	43.0	35.1
Cerebrovascular diseases	I60-I69	100.6	81.1	117.2	208.1	171.0	240.0	175.2	137.3	208.1
Atherosclerosis	I70	12.3	11.0	13.4	17.4	14.7	19.7	5.4	5.8	5.1
Pneumonia	J12-J18	10.6	14.3	7.5	13.7	19.5	8.7	12.0	17.1	7.6
Chronic bronchitis, asthma	J41-J46	17.3	25.3	10.5	12.6	20.7	5.6	23.9	37.1	24.2
Alcoholic liver disease	K70	15.0	22.7	8.4	7.8	12.4	3.9	13.5	21.2	6.9
Fibrosis and cirrhosis of liver	K74	5.8	5.8	5.7	10.7	13.7	8.1	15.9	21.1	11.4
Transport accidents	V01-V99	7.3	12.0	3.3	11.4	17.3	6.3	11.3	18.3	5.2
Falls	W00-W19	6.9	10.2	4.0	6.3	9.5	3.5	9.3	14.7	4.6
Accidental drowning and submersion	W65-W74	6.7	11.7	2.5	10.4	19.3	2.8	9.7	17.2	3.2
Exposure to excessive natural cold	X31	5.9	9.6	2.8	8.1	13.0	3.9	11.8	17.4	7.0
Accidental poisoning by alcohol	X45	7.3	10.7	4.4	5.5	9.7	1.9	9.4	15.9	3.8
Intentional self-harm	X60-X84	16.6	29.3	5.8	19.5	36.3	5.1	31.0	54.3	10.7
Assault	X85-Y09	4.7	7.8	2.1	6.2	9.5	3.3	5.2	7.9	2.9

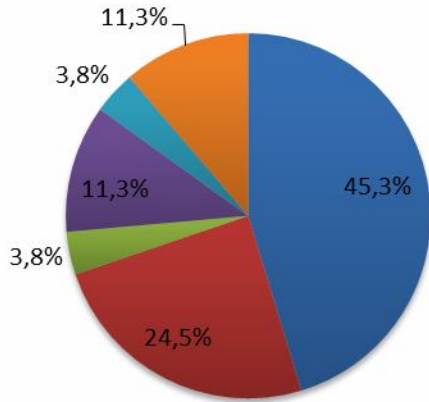
Infant mortality per 1000 live births

Years	Estonia	Latvia	Lithuania
1960	31.6	27.0	46.5
1965	20.3	18.6	35.4
1970	17.7	17.9	19.4
1975	18.2	20.3	19.6
1980	17.1	15.4	14.4
1985	14.1	13.0	14.2
1990	12.3	13.7	10.3
1991	13.1	15.7	14.3
1992	15.7	17.6	16.5
1993	15.6	16.2	15.4
1994	14.4	15.7	14.0
1995	14.8	18.8	12.4
1996	10.5	15.9	10.0
1997	10.0	15.3	10.3
1998	9.3	15.0	9.2
1999	9.5	11.3	8.6
2000	8.4	10.4	8.5
2001	8.8	11.0	7.8
2002	5.7	9.9	7.9
2003	7.0	9.4	6.8
2004	6.4	9.4	7.9
2005	5.4	7.8	6.9
2006	4.4	7.6	6.8
2007	5.0	8.8	5.9
2008	5.0	6.7	5.0
2009	3.6	7.7	5.0
2010	3.3	5.7	4.3



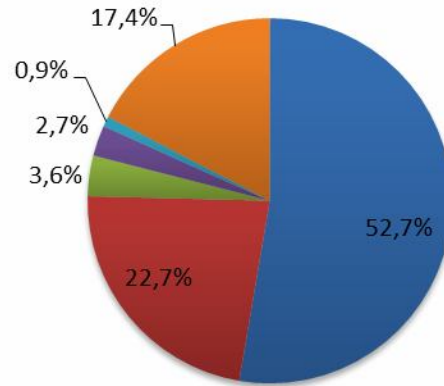
Structure of infant mortality in percentage in 2010

Estonia



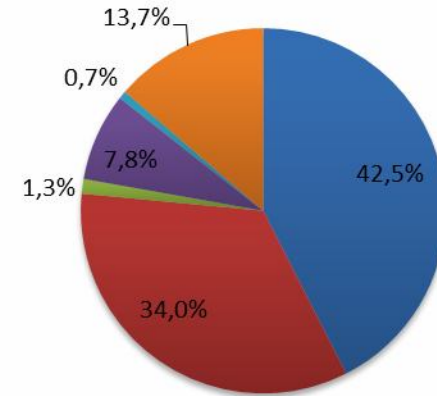
- Perinatal conditions
- Congenital anomalies
- Infectious & parasitic
- Injury & poisoning
- Respiratory system
- Others

Latvia



- Perinatal conditions
- Congenital anomalies
- Infectious & parasitic
- Injury & poisoning
- Respiratory system
- Others

Lithuania



- Perinatal conditions
- Congenital anomalies
- Infectious & parasitic
- Injury & poisoning
- Respiratory system
- Others

Health in the Baltic countries

Infant mortality by cause per 10,000 live births in 2010

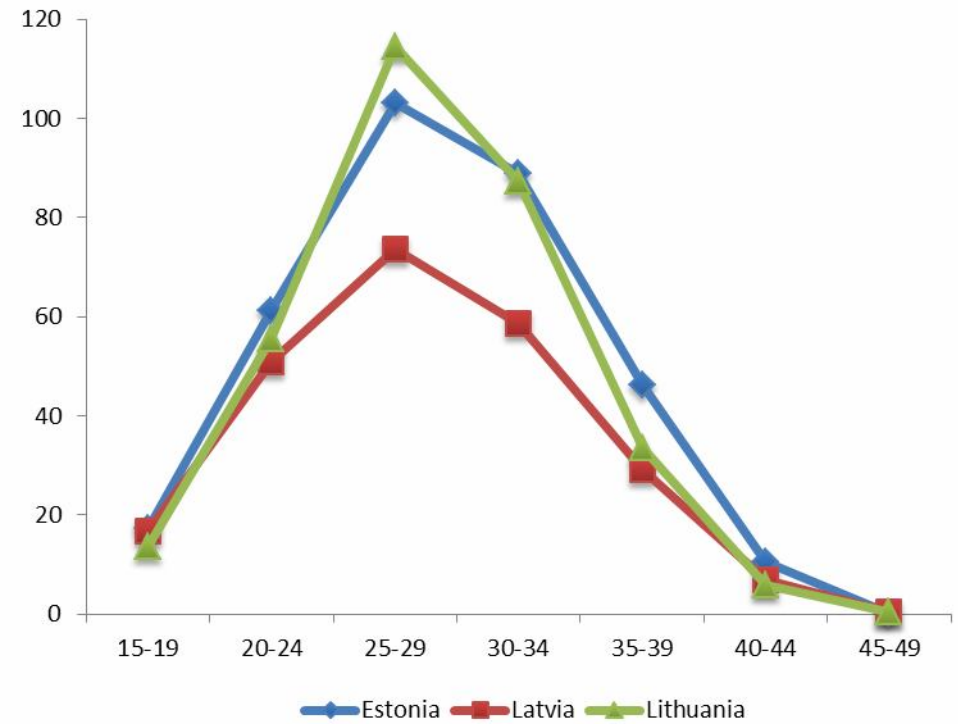
	Estonia		Latvia		Lithuania	
	Rate	%	Rate	%	Rate	%
Certain conditions originating in the perinatal period	15.2	45.3	30.3	52.7	18.2	42.5
Congenital malformations	8.2	24.5	13.1	22.7	14.5	34.0
Diseases of the respiratory system	1.3	3.8	0.5	0.9	0.3	0.7
Infectious and parasitic diseases	1.3	3.8	2.1	3.6	0.5	1.3
Injury, poisoning and other consequences of the external causes	3.8	11.3	1.6	2.7	3.3	7.8
Diseases of the nervous system and sensory organs	1.3	3.8	1.0	1.8	1.4	3.3
Diseases of the digestive system	0	0.0	1.0	1.8	0	0.0
Other causes	2.5	7.5	7.8	13.8	4.5	10.4
TOTAL	33.5	100	57.5	100	42.7	100

Perinatal, neonatal and maternal mortality in 2010

	Estonia	Latvia	Lithuania
Perinatal mortality per 1000 births	5.7	8.2	5.6
Stillbirth rate per 1000 births	4.2	5.7	4.1
Neonatal mortality per 1000 live births	1.9	3.6	2.3
Early neonatal mortality per 1000 live births	1.6	2.5	1.5
Maternal mortality per 100,000 live births	6.3	26.1	5.6
Standard perinatal mortality	3.3	5.7	4.0
Standard stillbirth rate	2.4	4.2	3.3

Birth rates by age of mother in 2010
per 1000 females

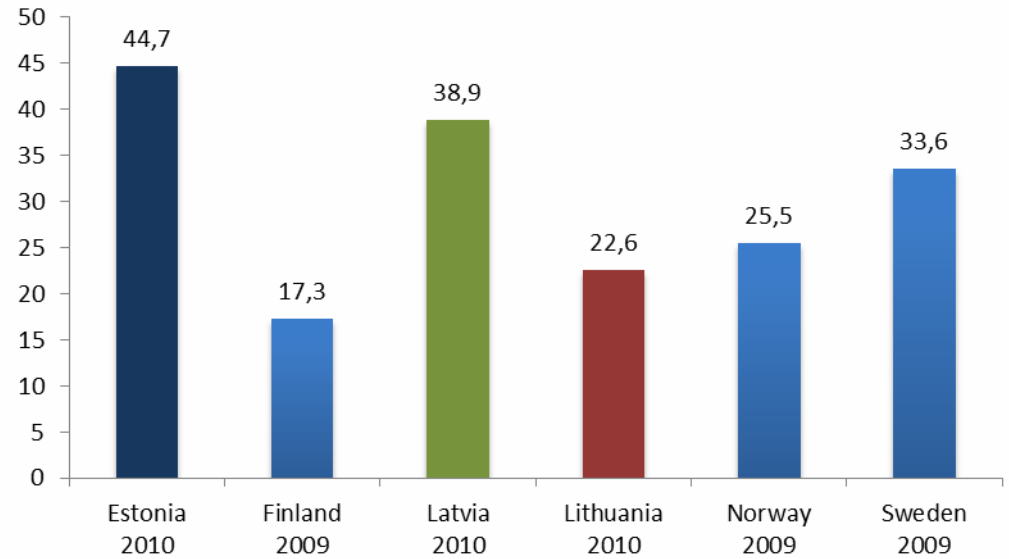
	Estonia	Latvia	Lithuania
Women aged 15-49	48.3	34.4	42.7
By specific age groups:			
15-19	17.1	16.6	13.6
20-24	61.2	50.8	55.4
25-29	103.2	73.7	114.4
30-34	88.8	58.7	87.2
35-39	46.1	29.0	33.4
40-44	10.5	7.0	5.9
45-49	0.2	0.3	0.3
Total fertility rate	1.64	1.18	1.55



Abortions in 2010

	Estonia	Latvia	Lithuania
Total abortions			
Total number	9087	10820	11590
Per 1000 women aged 15-49	27.7	19.3	13.9
Per 100 live births	57.4	56.5	37.6
Induced abortions			
Total number	7068	7443	6989
Per 1000 women aged 15-49	21.6	13.3	8.4
Per 100 live births	44.7	38.9	22.6
Percentage			
Spontaneous abortions	6.9	12.1	26.3
Legal abortions	74.7	67.4	58.9
Medical abortions	3	1.3	1.4
Other abortions	15.3	19.2	13.4

Induced abortions per 100 live births



Selected results of health behaviour survey in 2010, percentage

	Estonia, age group 16-64			Latvia, age group 15-64			Lithuania, age group 20-64		
	Total	Male	Female	Total	Male	Female	Total	Male	Female
Proportion of persons, who assessed their own health status to be good and reasonably good	48.2	45.5	50.1	55.6	59.0	52.3	49.4	50.5	48.7
Prevalence of overweight (BMI 25.0-29.9)	31.7	36.6	28.4	29.6	31.8	27.5	34.8	41.8	30.5
Prevalence of obesity (BMI \geq 30)	16.9	17.0	16.8	15.5	13.0	17.9	21.5	20.3	22.2
Proportion of daily smokers	26.2	36.8	18.7	33.7	47.4	20.7	21.8	34.2	14.4
Proportion of non-smokers	42.1	26.3	53.1	48.8	31.1	65.4	50.6	29.7	63.3
Proportion of persons eating fresh vegetables at least 3 days a week	51.1	43.7	56.1	66.8	60.7	72.6	55.9	50.0	59.4
Proportion of persons, who have leisure time physical exercise at least 30 min. on 4 and more days a week	14.8	15.8	14.1	19.7	22.7	16.7	28.6	29.2	28.3

Sources:

EE: National Institute of Health Development, Health Behavior among Estonian Adult Population 2010

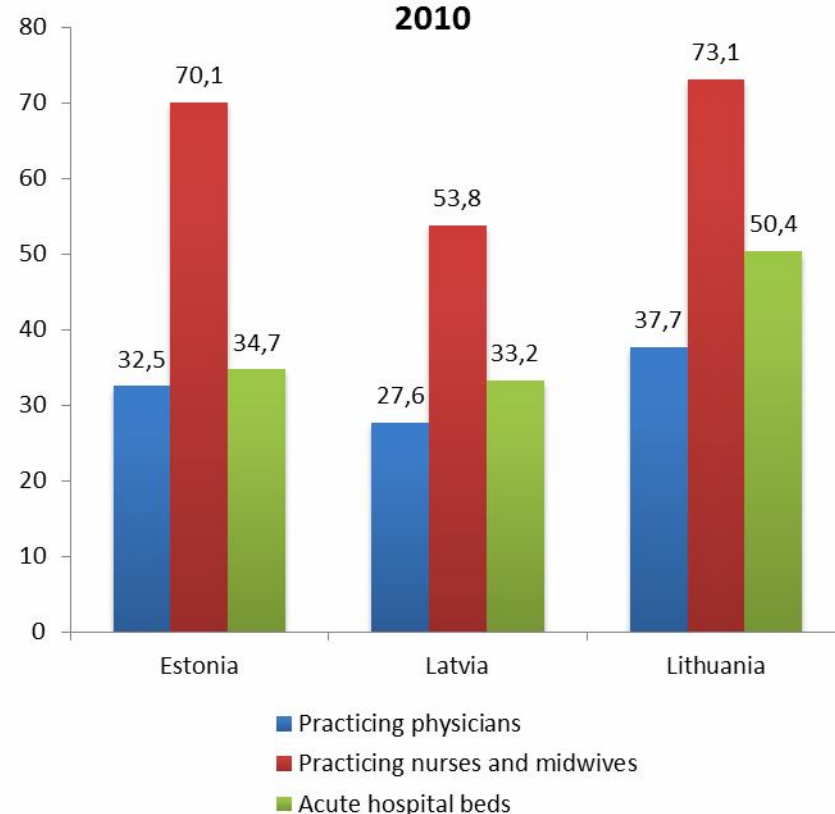
LV: The Centre of Health Economics; Health Behavior among Latvian Adult Population 2010

LT: Kaunas Medical University, Health Behavior among Lithuanian Adult Population 2010

Health facilities in 2010

	Estonia	Latvia	Lithuania
Hospitals	59	67	163
excl. nursing hospitals	36	61	113
Acute ¹ hospitals	33	36	84
Hospital beds thousand	7.1	11.9	26.8
per 10000 population	53.3	53.2	82.6
Hospital beds (excl. nursing) thousand	5.6	11.5	22.2
per 10000 population	41.7	51.2	68.4
Acute¹ hospital beds thousand	4.6	7.4	16.4
per 10000 population	34.7	33.2	50.4
Practicing physicians thousand	4.3	6.1	12.2
per 10000 population	32.5	27.6	37.7
Practicing dentists thousand	1.2	1.5	2.5
per 10000 population	9.0	6.7	7.8
Practicing nurses and midwives thousand	9.4 ²	12.0 ³	23.7
per 10000 population	70.1 ²	53.8 ³	73.1
Hospital admissions thousand	243.4	380.2	758.4
per 100 population	18.2	17.0	23.1
Hospital admissions (excl. nursing) thousand	227.2	366.7	727.0
per 100 population	17.0	16.4	22.1
Acute¹ hospital admissions thousand	213.5	313.9	668.5
per 100 population	15.9	14.0	20.3
Number of hospital day cases thousands	51.7	125.0	61.5
per 100 population	3.9	5.6	1.9
Physicians' outpatient visits⁴ millions	8.0	12.5	22.8
per 1 inhabitant	6.0	5.6	6.9

Physicians, nursing professionals and acute hospital beds per 10.000 population in 2010



¹ Acute hospitals/beds/admissions – nursing, palliative care, geriatrics, rehabilitation, tuberculosis and psychiatric hospitals/beds/admissions are excluded; for Estonia - short-term (with ALOS up to 18 days) rehabilitation care beds are included.

² Including associate professional nurses (with medical specialty)

³ Including physician's assistants (feldshers)

⁴ Dentist visits are excluded

Practising physicians by speciality at the end of 2010

	Estonia ¹		Latvia		Lithuania	
	Number	Per 10,000 population	Number	Per 10,000 population	Number	Per 10,000 population
TOTAL	4355	32.5	6146	27.6	12226	37.7
of them:						
Family doctors / general practitioners	865	6.5	1310	5.9	1838	5.7
Internal medicine	523	3.9	675	3.0	2107	6.5
Surgery	407	3.0	598	2.7	1179	3.6
Paediatrics	168	1.3	308	1.4	1048	17.2
Gynaecology (including obstetrics)	256	1.9	406	1.8	660	2.0
Oncology	37	0.3	61	0.3	97	0.3
Otolaryngology	95	0.7	147	0.7	270	0.8
Ophthalmology	124	0.9	204	0.9	344	1.1
Anaesthesiology	260	1.9	336	1.5	658	2.0
Neurology	128	1.0	217	1.0	449	1.4
Psychiatry	183	1.4	248	1.1	533	1.6
Addiction specialists	-	-	60	0.3	21	0.1
Tuberculosis	-	-	109	0.5	13	0.04
Infectology	33	0.3	49	0.2	57	0.2
Epidemiology	-	-	7	0.03	-	-
Dermatology & venerology	73	0.5	113	0.5	170	0.5
Radiology	188	1.4	239	1.1	457	0.2
Pathology	53	0.4	33	0.1	61	0.2
Forensic medicine	-	-	45	0.2	48	0.3
Laboratory	138	1.0	178	0.8	80	1.4
Hygiene	-	-	2	0.01	-	-
Others	824	6.2	801	3.6	2136	6.6

¹ In Estonia there are not separate specialists of tuberculosis, addictions and forensic medicine; the term of physicians does not include specialities of hygiene and epidemiology

Hospital beds by speciality at the end of 2010

	Estonia			Latvia¹			Lithuania		
	Number of beds	Per 10000 population	%	Number of beds	Per 10000 population	%	Number of beds	Per 10000 population	%
TOTAL	7145	53.3	100.0	11920	53.2	100.0	26804	82.6	100
of which:									
Internal medicine	1289	9.6	18.0	1872	8.4	15.7	4951	15.3	18.5
Rehabilitation	297	2.2	4.2	462	2.1	3.9	1378	4.2	5.1
Surgery (including orthopaedics)	1230	9.2	17.2	2227	9.9	18.7	4497	13.9	16.8
Oncology (including radiology)	132	1.0	1.8	567	2.5	4.8	696	2.1	2.6
Otolaryngology	58	0.4	0.8	109	0.5	0.9	286	0.9	1.1
Ophthalmology	24	0.2	0.3	83	0.4	0.7	293	0.9	1.1
Obstetrics	276	2.1	3.9	476	2.1	4.0	806	2.5	3.0
Gynaecology	175	1.3	2.4	318	1.4	2.7	650	2.0	2.4
Neurology	151	1.1	2.1	620	2.8	5.2	1480	4.6	5.5
Dermatology & venerology	30	0.2	0.4	15	0.1	0.1	114	0.4	0.4
Infectious	185	1.4	2.6	558	2.5	4.7	461	1.4	1.7
Tuberculosis	211	1.6	3.0	686	3.1	5.8	1150	3.5	4.3
Paediatrics	257	1.9	3.6	588	2.6	4.9	1419	4.4	5.3
Psychiatry	730	5.5	10.2	2398	10.7	20.1	3032	9.3	11.3
Addiction treatment	-	-	-	277	1.2	2.3	271	0.8	1.0
General & nursing	1557	11.6	21.8	664	3.0	5.6	4614	14.2	17.2

¹ Hospital beds average per year, excluding short-term social care beds

Selected notifiable diseases per 100,000 population in 2010

	ICD-10	Estonia	Latvia	Lithuania
Salmonella infections	A02	30.9	42.5	53.7
Bacillary dysentery	A03	3.4	0.5	1.3
Enteritis Rotaviralis	A08.0	96.2	145.6	77.7
Other intestinal infections	A04, A05, A08.1-5, A09	146.0 ¹	273.2 ²	438.0
Diphtheria	A36	-	0.1	-
Whooping cough	A37	96.6	0.4	0.6
Meningococcal infection	A39	0.1	0.4	1.5
Measles	B05	-	-	0.06
Tick-borne viral encephalitis	A84	15.0	22.1	18.6
Viral hepatitis, total	B15-B19	25.5	69.9	6.2
A	B15	0.4	13.3	0.5
B	B16.2, B16,9	1.7	3.8	2.2
C	B17.1	2.5	2.7	1.2
Acute upper respiratory infections	J00-J06	11370.5	...	16828.0
Influenza	J10-J11	97.4	...	103.0
Syphilis	A50-A53	5.1	6.0	10.6
Gonorrhoea	A54	8.1	15.9	9.6
AIDS	B20-B24	1.9	5.5	1.0
HIV carrier	Z21	27.8	12.2	4.7
Incidence of tuberculosis (excl. relapses)	A15-A19	24.6	36.8	47.9
Incidence of malignant neoplasms	C00-C97	506.2 ³	473.4	533.1 ⁴

¹ A04.0-6, 8-9; A05.0; A08.1-5

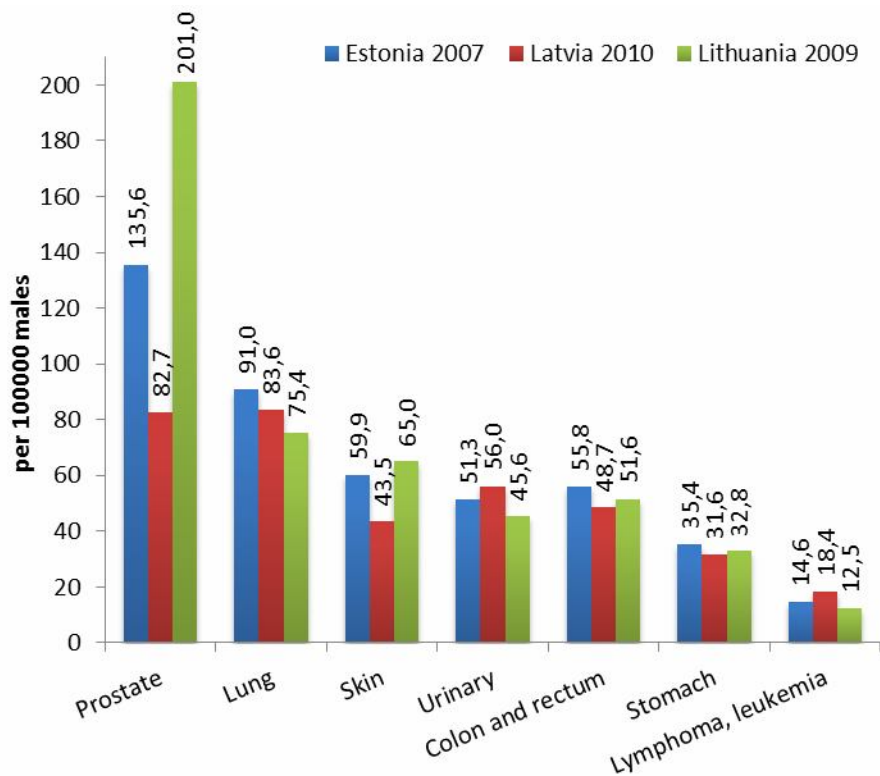
² A04; A05; A07.9; A08.1-4; A09

³ data for 2007

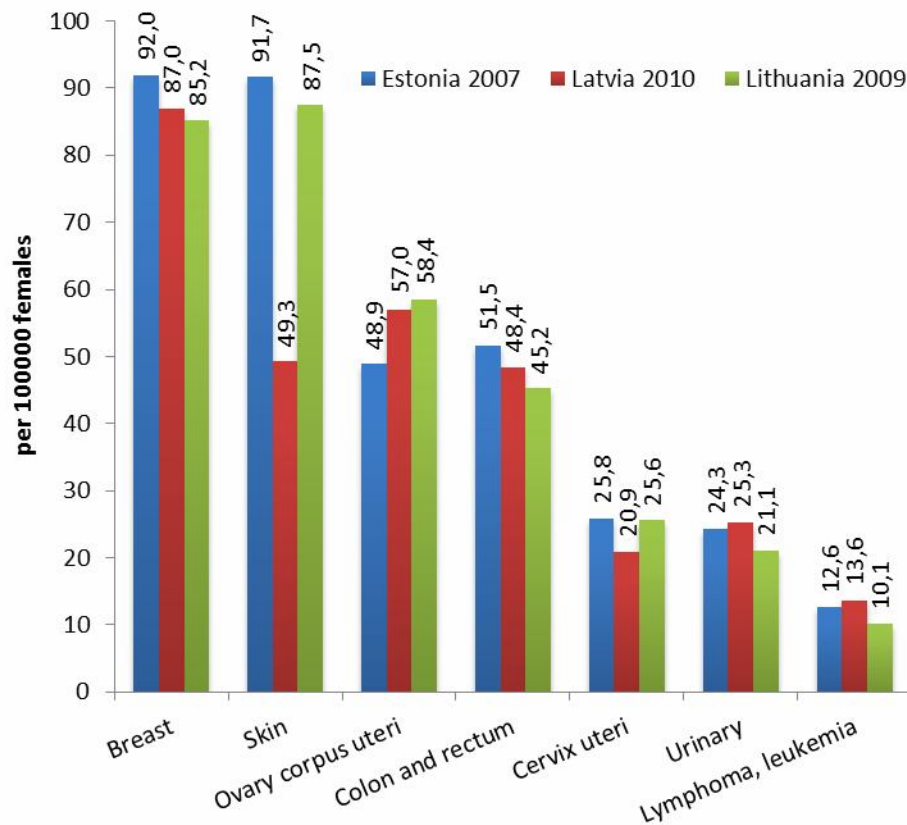
⁴ data for 2009

Incidence of malignant neoplasms by main sites

Males



Females



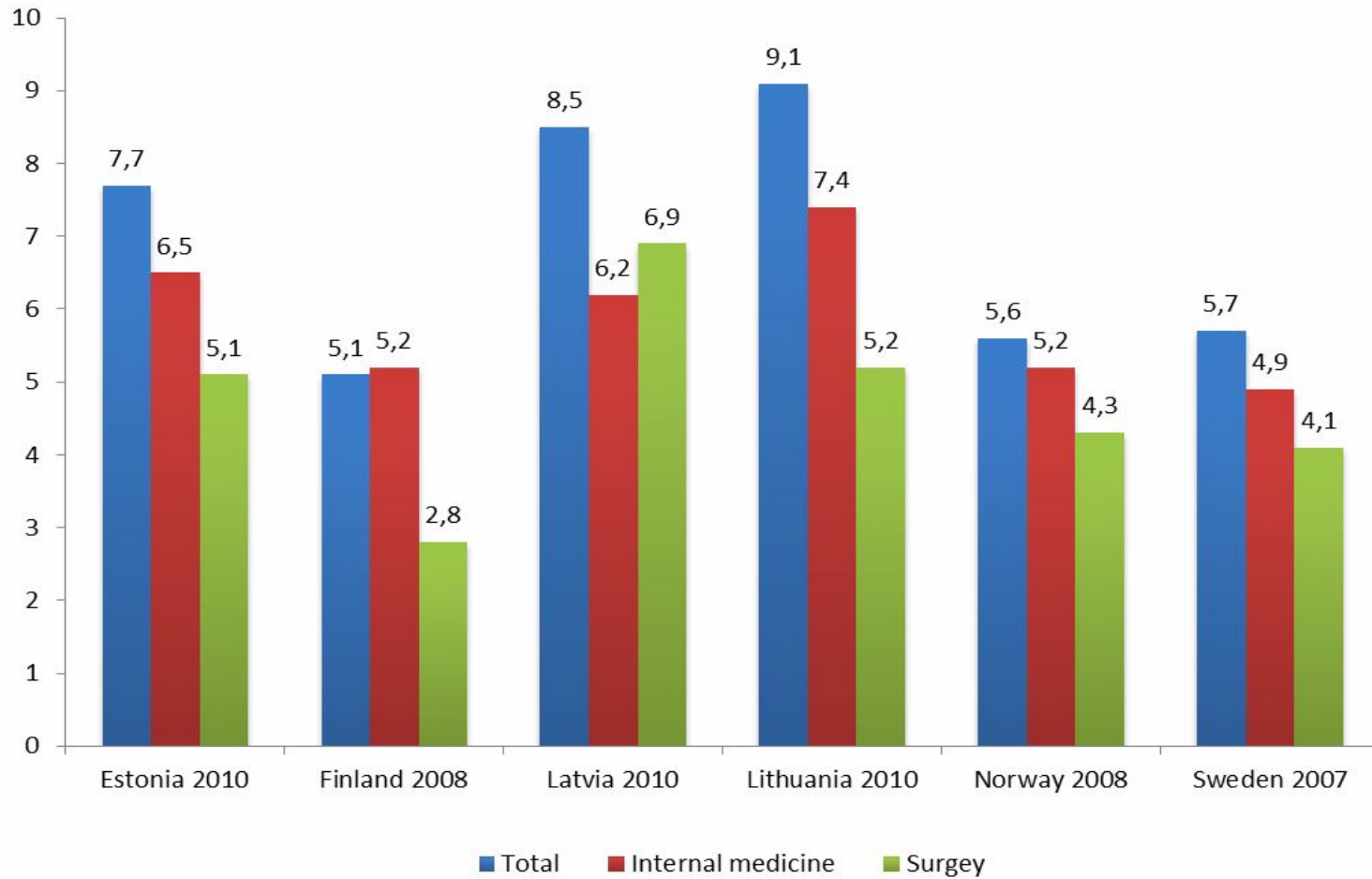
Hospital beds use by speciality in 2010

	Estonia					Latvia ¹					Lithuania ²				
	Admission per 1000 pop.	Bed occupancy		Average length of stay	Bed turnover	Admission per 1000 pop.	Bed occupancy		Average length of stay	Bed turnover	Admission per 1000 pop.	Bed occupancy		Average length of stay	Bed turnover
		Days	%				Days	%				Days	%		
TOTAL	181.6	269.8	73.9	7.7	35.2	169.8	272.5	74.7	8.5	31.9	249.5	279.8	76.7	9.1	30.7
Internal medicine	37.9	282.9	77.5	6.5	42.0	34.9	270.8	74.2	6.2	43.4	54.2	287.0	78.6	7.4	39.0
Rehabilitation	5.0	284.3	77.9	11.5	24.4	5.0	278.2	76.2	11.4	24.3	5.2	270.4	74.1	21.0	12.9
Surgery (including orthopaedics)	45.7	266.8	73.1	5.1	51.5	40.4	268.7	73.6	6.9	38.8	64.2	246.5	67.5	5.2	47.6
Oncology (include radiology)	3.1	292.8	80.2	8.6	33.6	6.5	222.5	61.0	8.6	25.8	7.3	285.3	78.2	8.2	34.6
Otolaryngology	7.2	250.9	68.7	1.6	158.5	2.6	237.3	65.0	4.3	55.0	5.7	247.4	67.8	3.7	66.1
Ophthalmology	1.2	135.8	37.2	2.0	67.3	2.5	247.6	67.8	3.6	68.8	7.9	218.3	59.8	2.4	90.2
Obstetrics	15.4	208.0	57.0	2.8	73.7	10.2	215.7	59.1	4.5	48.4	12.8	224.4	61.5	4.4	51.5
Gynaecology	10.0	192.0	52.6	2.6	73.1	8.3	214.9	58.9	3.7	58.8	12.8	192.7	52.8	3.0	64.2
Neurology	6.3	279.8	76.6	5.4	50.8	10.3	285.8	78.3	7.6	37.7	17.1	301.5	82.6	8.0	37.6
Dermatology & venerology	1.0	248.4	68.1	9.0	27.6	0.1	45.7	12.5	3.7	12.3	1.0	277.3	76.0	9.9	28.0
Infectious	5.8	222.0	60.8	5.2	42.3	12.4	254.5	69.7	5.1	50.2	7.2	273.2	74.9	4.7	57.7
Tuberculosis	0.5	235.7	64.6	66.6	3.4	3.0	266.7	73.1	26.6	10.0	1.5	297.3	81.4	69.1	4.3
Paediatrics	11.5	235.8	64.6	3.7	60.6	11.9	273.6	75.0	6.1	45.1	20.8	259.6	71.1	5.1	50.8
Psychiatry	9.7	316.7	86.8	17.3	18.2	7.3	322.4	88.3	47.1	6.9	9.3	295.0	80.8	28.7	10.3
Addiction treatment	-	-	-	-	-	6.4	226.8	62.1	4.4	52.0	1.8	278.3	76.2	12.2	22.8
General & nursing	12.0	298.1	81.7	25.2	11.8	7.8	258.7	70.9	9.6	26.9	9.5	328.2	89.9	46.7	7.0

¹ Excluding short-term social care beds

² Including hospital day cases (about 7% of admissions)

Average length of stay (days) in the Baltic and Nordic countries



Health in the Baltic countries

Discharges¹ by groups of diseases in 2010

	Estonia				Latvia ²				Lithuania			
	Children (0-14)		Adults (15 +)		Children (0-17)		Adults (18 +)		Children (0-17)		Adults (18 +)	
	discharges per 1000 pop.	average length of stay	discharges per 1000 pop.	average length of stay	discharges per 1000 pop.	average length of stay	discharges per 1000 pop.	average length of stay	discharges per 1000 pop.	average length of stay	discharges per 1000 pop.	average length of stay
Certain infectious and parasitic diseases	22.3	3.1	4.3	16.3	23.7	5.4	5.3	18.0	24.5	4.9	5.1	25.1
Neoplasms	3.2	5	20.0	8.1	3.0	7.9	15.6	8.6	3.5	6.9	21.8	9.6
Diseases of the blood and blood forming organs and certain disorders involving the immune mechanisms	1.0	3.4	1.3	6.9	1.1	6.0	0.8	6.8	0.9	5.9	1.3	7.1
Endocrine, nutritional and metabolic diseases	1.5	4.5	3.6	7.7	2.1	5.7	2.7	7.4	2.9	5.9	4.1	8.6
Mental and behavioural disorders	5.5	9.7	12.0	17.4	7.7	28.0	15.7	22.6	5.3	12.2	12.7	25.2
Diseases of the nervous system	5.4	5.9	5.3	9.3					6.4	5.8	14.3	9.7
Diseases of the eye and adnexa	0.8	0.9	1.2	2.4	10.2 ³	6.6 ³	9.2 ³	6.0 ³	2.8	4.8	6.3	2.9
Diseases of the ear and mastoid process	5.1	3.4	0.9	3.6					2.4	5.4	1.7	6.9
Diseases of the circulatory system	1.2	3.3	39.1	10.6	2.0	3.5	31.4	7.4	3.0	5.0	61.2	12.6
Diseases of the respiratory system	44.0	3.4	11.5	5.8	59.9	5.5	9.3	7.7	65.6	5.2	13.4	8.9
Diseases of the digestive system	8.4	2.8	16.1	5.1	18.5	3.8	14.3	6.0	15.7	3.9	18.4	6.5
Diseases of the skin and subcutaneous tissue	2.6	3.5	3.2	7.9	5.3	4.4	1.9	7.7	5.9	4.3	3.3	9.4
Diseases of the musculo-skeletal and connective tissue	2.3	4.2	12.7	6.4	3.9	7.9	10.4	8.5	4.4	5.7	12.3	8.0
Diseases of the genitourinary system	5.0	4	11.2	4.4	7.0	6.0	9.7	4.6	6.7	5.3	14.2	5.1
Pregnancy, childbirth and puerperium ⁴	0.1	1.7	39.3	2.8	3.5	4.0	31.3	4.3	2.7	4.2	33.6	4.1
Certain conditions originating in perinatal period	18.2	6.8	-	-	13.4	7.3	-	-	20.4	5.9	-	-
Congenital malformations, deformations and chromosomal abnormalities	7.5	4.9	0.5	5.4	5.7	6.8	0.3	6.0	6.5	6.0	0.3	6.5
Symptoms, signs and abnormal clinical and laboratory findings, not elsewhere classified	4.9	2.1	1.2	3.8	1.1	3.1	0.2	4.5	8.6	15.7	1.5	3.7
Injury, poisoning and certain other consequences of external causes	10.3	2.9	11.9	8.8	17.7	3.7	15.2	7.2	17.0	3.9	17.5	9.8
Factors influencing health and contact with health services	3.6	3.8	1.5	5.6	-	-	-	-	7.2	3.8	1.5	7.5
TOTAL	152.8	4.1	179.2	8.0	184.0	6.4	159.2	8.7	210.9	5.6	229.4	10.3

¹ Excluding hospital day cases

² Excluding short-term social care beds, patients transferred to another hospital or died patients

³ Diseases of the nervous system and sense organs

⁴ Per 1000 female population

Surgical operations¹ in the hospitals in 2010

	Estonia			Latvia			Lithuania ²		
	Number	Per 100,000 population	%	Number	Per 100,000 population	%	Number	Per 100,000 population	%
TOTAL	81222	6060.6	100.0	115739	5169.2	100.0	248969	7455.4	100.0
On the nervous system	2417	180.4	3.0	3023	135.0	2.6	8031	240.5	3.2
On the endocrine system	581	43.4	0.7	737	32.9	0.6	2442	73.1	1.0
On the eye	1569	117.1	1.9	3803	169.9	3.3	17960	537.8	7.2
On the ear, nose, throat, mouth, pharynx, facial bones and joints	10079	752.1	12.4	5823	260.1	5.0	25660	768.4	10.3
On the respiratory system	1522	113.6	1.9	1593	71.1	1.4	3427	102.6	1.4
On the heart and central vessels	5046	376.5	6.2	8493	379.3	7.3	2399 ³	71.8 ³	1.0 ³
On the peripheral vessels and lymphatic system	3386	252.7	4.2	3199	142.9	2.8	10913 ⁴	326.8 ⁴	4.4 ⁴
On the digestive system and spleen	12434	927.8	15.3	13606	607.7	11.8	39195	1173.7	15.7
On the urinary organs	2866	213.9	3.5	4952 ⁵	221.2 ⁵	4.3 ⁵	8679	259.9	3.5
On the prostate	1018	164.8 ⁶	1.3				6409	412.6 ⁶	2.6
On female genital organs ⁷	8519	1178.9	10.5	13267	1100.5	11.5	25787	1443.9	10.4
Obstetrical operations ⁷	11695	1618.4	14.4	16614	1378.1	14.4	26000	1455.8	10.4
On the musculoskeletal system	14184	1058.4	17.5	22155	989.5	19.1	45047	1348.9	18.1
On the breast	1027	76.6	1.3	1908	85.2	1.6	3246	97.2	1.3
On the skin and subcutaneous tissue	4005	298.8	4.9	10908	487.2	9.4	18320	548.6	7.4
Other procedures	874	65.2	1.1	5658	252.7	4.9	5454	163.3	2.2

¹ Hospital day cases are excluded

² Data for 2009, ³ Operations on the heart, ⁴ Operations on vessels

⁵ Operations on the urinary organs and prostate

⁶ Per 100,000 male population, ⁷ Per 100,000 female population

Sales of medicinal products by ATC group in 2010
DDD/1 000 inhabitants/day

ATC group	Estonia	Latvia	Lithuania
A Alimentary tract and metabolism	113.9	98.8	71.4
B Blood and blood forming organs	67.6	60.5	42.7
C Cardiovascular system	349.6	206.5	286.7
D Dermatologicals	1.4	0.3	0.3
G Genitourinary system and sex hormones	50.3	9.1	7.7
H Systemic hormonal preparations, excl. sex hormones and insulins	18.9	17.9	22.6
J Antiinfectives for systemic use	16.2	13.3	16.8
L Antineoplastic and immunomodulating agents	6.9	4.1	4.5
M Musculo-skeletal system	60.2	55.3	51.5
N Nervous system	85.3	62.6	84.7
P Antiparasitic products, insecticides and repellents	0.8	0.6	0.5
R Respiratory system	61.3	46.1	38.6
S Sensory organs	17.9	1.9	3.4
V Various	0.1	0.05	0.03
Total	850.2	577.0	631.6

Sources:

EE: State Agency of Medicines

LV: The State Agency of Medicines of Latvia

LT: State Medicines Control Agency

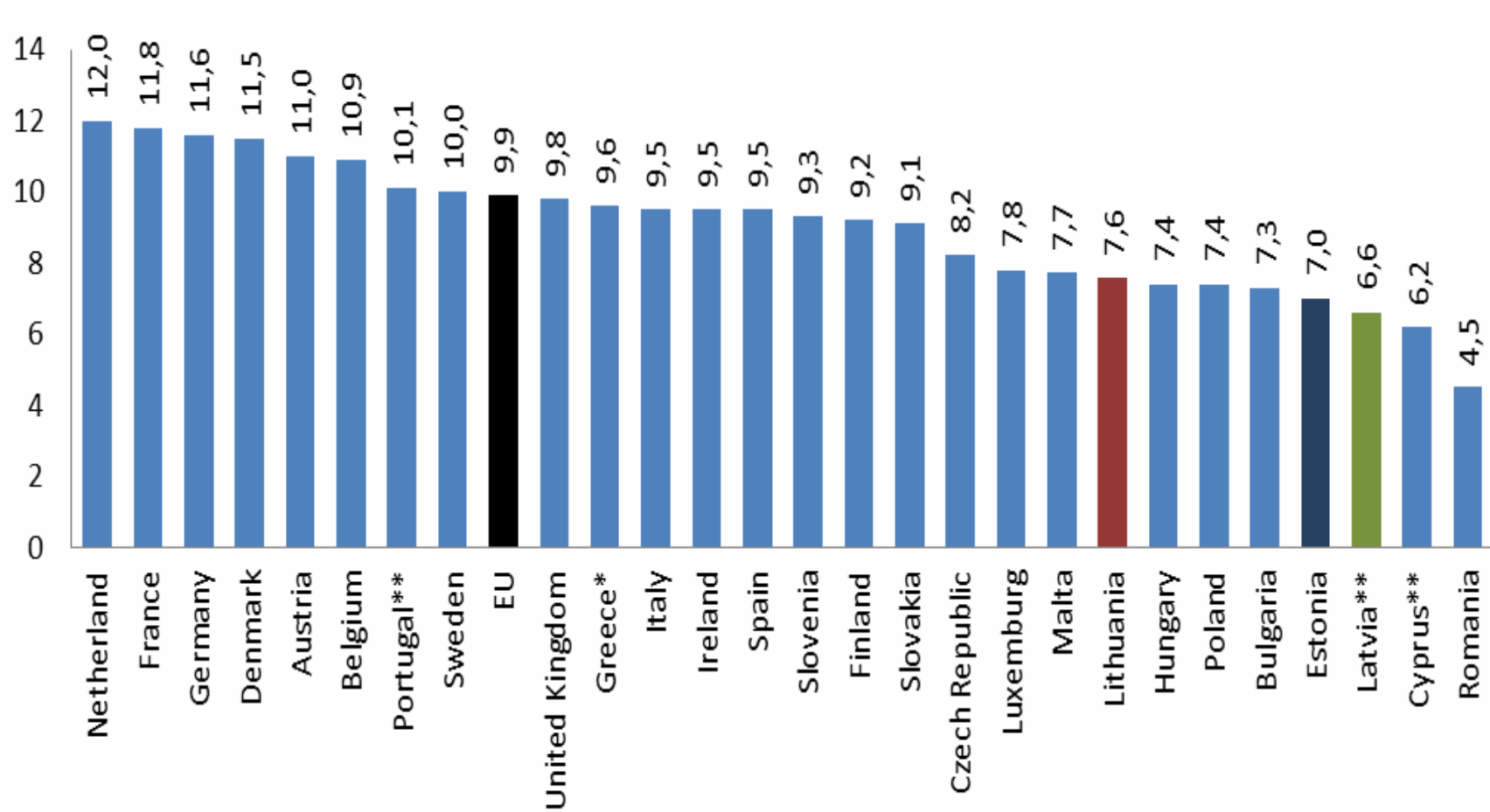
Health in the Baltic countries

Health care expenditure (in millions) in 2009 (Data calculated using OECD methodology of System of Health Accounts)

	Estonia	Latvia¹	Lithuania
Total health care expenditure (in national currency):	15156.7	1066.5	6931.5
public	11405.6	663.4	5089.2
of which social security funds	9882.9	-	4234.8
private	3161.9	398.6	1841.8
of which private households out-of-pocket expenditure	3079.1	376.7	1792.8
Current expenditure on health care (in national currency)	14541.3	962.7	6839.9
Expenditure on gross capital formation in health care (in national currency)	615.4	103.8	91.6
Gross domestic product (in national currency)	216874.8	16188.2	91914.0
Gross domestic product (in Euro)	13860.8	23033.9	26620.1
Total health care expenditure (in Euro)	968.7	1517.5	2007.5
Total health care expenditure per capita (in Euro)	722.7	670.0	601.1
Total expenditure on health care as percentage of GDP (%)	7.0	6.6	7.5
Public expenditure on health care as percentage of GDP (%)	5.3	4.1	5.5
Private expenditure on health care as percentage of GDP (%)	1.5	2.5	2.0
Public expenditure on health care as percentage of total expenditure	75.3	62.2	73.4
Expenditure on gross capital formation as percentage of total expenditure	4.1	9.7	1.3
The structure of current expenditure on health care by health care functions (%):			
curative care	52.1	53.4	48.1
rehabilitative care	2.1	1.9	3.4
long-term care	4.4	3.9	9.1
ancillary services to health care	10.1	9.4	6.0
medical goods dispensed to out-patients	26.9	24.3	29.6
prevention and public health services	2.3	1.6	1.1
health administration and health insurance	2.2	5.5	2.7

¹ 2008 data

Total health care expenditure as % of GDP in EU member states in 2009



* 2007 data, ** 2008 data

Obstetric Definitions

Live birth -	A foetus that after complete expulsion or extraction from its mother breathes or shows any other evidence of life, irrespective of the duration of the pregnancy.		standard rate is used for international comparison including births with a weight of 1000 g or more.
Still birth -	Death prior to the complete expulsion or extraction from its mother of a product of conception after 22 weeks of gestation. The standard rate is used for international comparison including births with a weight of 1000 g or more.	Maternal death -	The death of a woman while pregnant or within 42 days after termination of pregnancy, irrespective of the duration and the site of the pregnancy, from any cause related to or aggravated by the pregnancy or its management, but not from accidental or incidental causes.
Infant death -	A live-born infant who dies during the first year of life.	Abortion -	Spontaneous or induced (legal, therapeutic, criminal) abortion is the termination of pregnancy or artificial extraction of the product of the conception during the first 22 weeks of gestation.
Neonatal death -	Death occurring at the age of 0 to 27 full days of life (27 days 23 hours 59 min.). The first day of life is considered as day zero.		
Early neonatal death -	Death occurring at the age of 0 to 6 full days of life (6 days 23 hours 59 min.). The first day of life is considered as day zero.	Still birth rate -	The average number of children that would be born per woman if all women lived to the end of their childbearing years and bore children according to a given set of age-specific fertility rates.
Perinatal death -	Foetal deaths and live-born infants who die at the age of 0 to 6 full days of life. The		

Sources

1. Statistical Yearbook of Estonia 2011. Statistics Estonia. Tallinn, 2011
2. Statistical database on the website of Statistical Office of Estonia: <http://www.stat.ee>
3. Statistical data on the website of National Institute for Health Development: <http://www.tai.ee/tstua>
4. Databases of Central Statistical Bureau of Latvia
5. Statistical overviews, databases and surveys of The National Health Service of Latvia
6. Website of The State Agency of Medicines of Latvia: <http://www.zva.gov.lv>
7. Statistical Yearbook of Lithuania 2010; Department of Statistics to the Government of the Republic of Lithuania; Vilnius, 2011; <http://www.stat.gov.lt>
8. Demographic Yearbook 2010; Department of Statistics to the Government of the Republic of Lithuania; Vilnius, 2011; <http://www.stat.gov.lt>
9. Health Statistics of Lithuania 2010; Health Information Centre, Institute of Hygiene; Vilnius, 2011; <http://sic.hi.lt>
10. Health for All database, WHO Regional Office for Europe; <http://www.euro.who.int>
11. Health Statistics in the Nordic Countries 2008; NOMESCO, Copenhagen 2010; <http://www.nom-nos.dk>

Further information:

National Institute for Health Development,
Hiiu 42, 11619 Tallinn, Estonia
Phone: 372-6593 900,
Fax: 372-6593 901,
E-mail: tai@tai.ee
Website: www.tai.ee
M.Jesse, Director

The National Health Service,
Cesu Street 31, k-3, Riga LV-1012, Latvia
Phone: +37167043700
Fax: +37167043701
e-mail: nvd@vmnvd.gov.lv
Website: <http://www.vmnvd.gov.lv>
M.Taube, Director

Health Information Centre of Institute of Hygiene
Didzioji str. 22, LT-01128, Vilnius, Lithuania
Phone: + 370 52773303
Fax: + 370 52624583
E-mail: Instututas@hi.lt
Website: <http://sic.hi.lt>
Dr. R.Gurevicius, Head of Health Information Centre

Health in the Baltic Countries 2010

Editorial board:

National Institute for Health Development of Estonia:

Dr M. Rätsep, M. Ruuge, R. Tilk

The National Health Service of Latvia:

J.Misins, D.Mihalovska, M.Pasevska, I.Redovica, B.Zarina, I.Zile

Health Information Centre, Institute of Hygiene:

R.Gaidelyte, D.Tendziagolskyte