

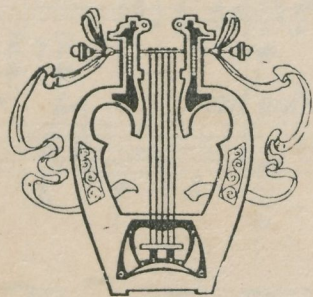
E. Heitmann

SIMPLE AVEU

ROMANCE SANS PAROLES

FRANÇOIS THOMÉ

OP. 25



EDITION G. PAUKAM TARTU

Noodiäri
O. KRUPP
Harju tänn. №39, Tallinn.

WILLIAM WELLS

ROMANCE AND PAROLES

THOMAS H. BROWN

OF 23

EDITION OF PAPERBACK



SIMPLE AVEU.

FRANÇOIS THOMÉ.
Op. 25.

Moderato.

dolciss. e legato e sempre sosten.

le chant bien marqué le petites notes pp

con due Ped.

sempre dolce

con anima

sempre marc. tre corde

calmato

Handwritten: *calmato*

This system contains the first two staves of music. The upper staff is in treble clef and the lower in bass clef, both with a key signature of one sharp (F#). The music features a steady eighth-note accompaniment in the bass and a more melodic line in the treble. The tempo marking 'calmato' is written below the first staff.

dolce

This system contains the next two staves of music. The tempo marking 'dolce' is written below the first staff. The musical texture continues with similar accompaniment and melodic lines.

Animato con calore.

cre - - seen - - do

animato sempre.

This system contains the third and fourth staves. The tempo marking 'Animato con calore.' is written above the first staff. The lyrics 'cre - - seen - - do' are written above the notes in the upper staff. The tempo marking 'animato sempre.' is written below the fourth staff.

poco a poco

f

Tempo I.

con anima e marcatiss. il canto

This system contains the fifth and sixth staves. The tempo marking 'poco a poco' is written above the first staff, followed by a dynamic marking 'f'. The tempo marking 'Tempo I.' is written above the sixth staff. The instruction 'con anima e marcatiss. il canto' is written below the sixth staff.

This system contains the seventh and eighth staves of music. It continues the musical texture established in the previous systems, with a key signature of one sharp and a consistent accompaniment.

Animato un poco.

Large *mf* *e sempre more.*

This system features a grand staff with treble and bass clefs. The treble clef contains a complex melodic line with many sixteenth notes and some triplets. The bass clef provides a steady accompaniment with quarter notes. The tempo is marked 'Animato un poco' and the initial dynamic is 'Large'.

calmato *dim.*

Ped. *

This system continues the piece with a 'calmato' (calmer) section. It includes a 'dim.' (diminuendo) instruction. The treble clef has a triplet of eighth notes. A 'Ped.' (pedal) instruction is placed below the bass clef, followed by an asterisk.

Tempo I.

pp una corda

sempre calmato. *poco rall.*

This system marks the beginning of the 'Tempo I' section. The dynamic is 'pp una corda'. The tempo is 'Tempo I'. The piece is marked 'sempre calmato.' and 'poco rall.' (poco rallentando).

This system continues the 'Tempo I' section with a complex melodic line in the treble clef and a steady bass line. It features a triplet of eighth notes in the bass clef.

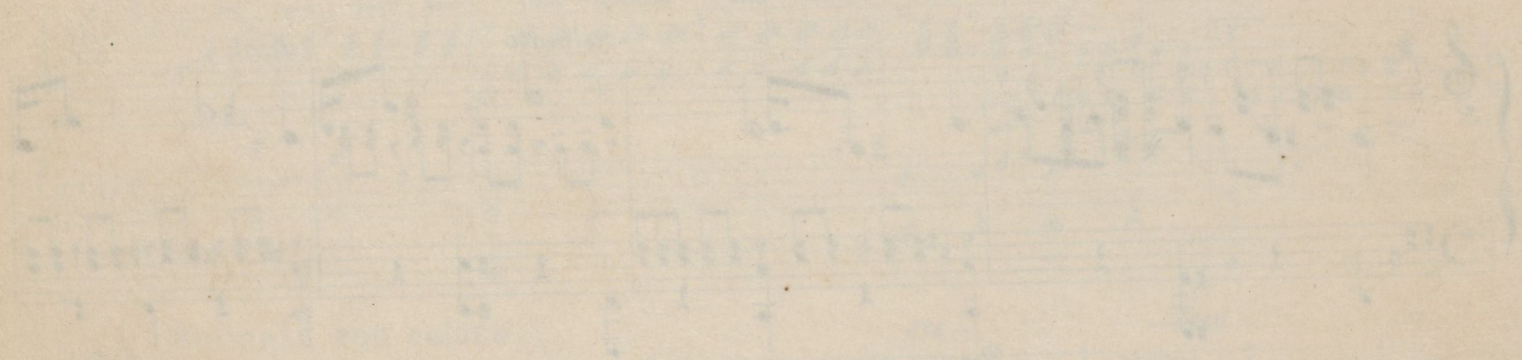
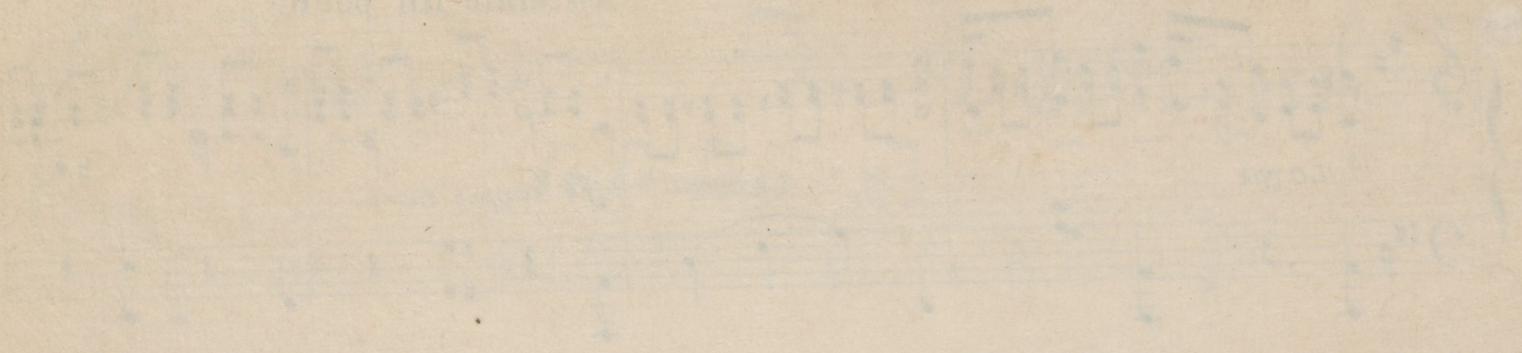
poco rall *pp* *pp* *PPP Fine.*

monc. il basso.

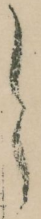
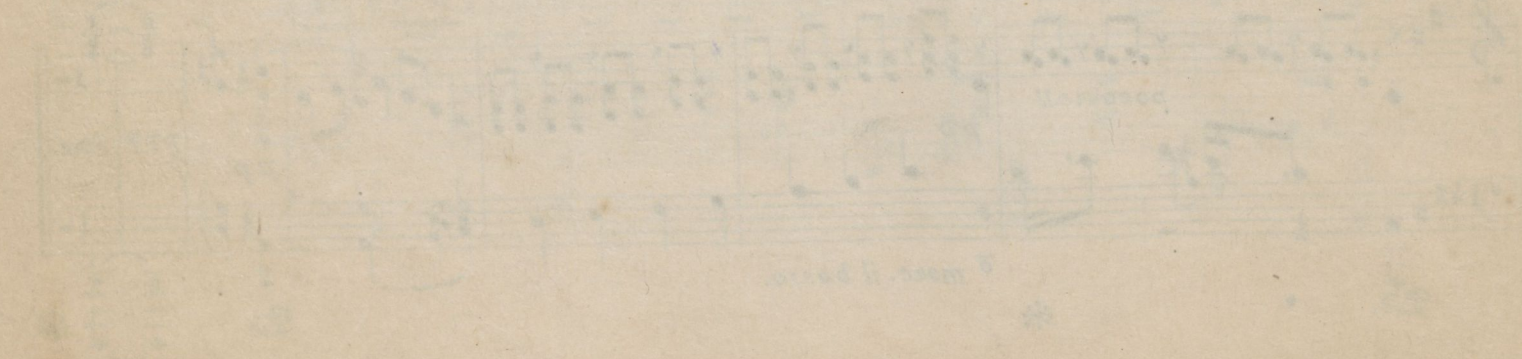
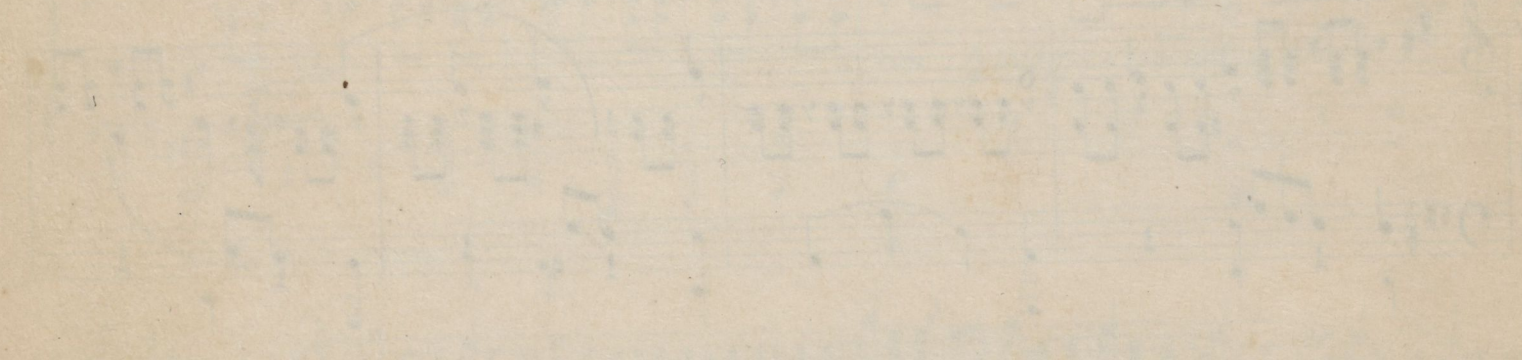
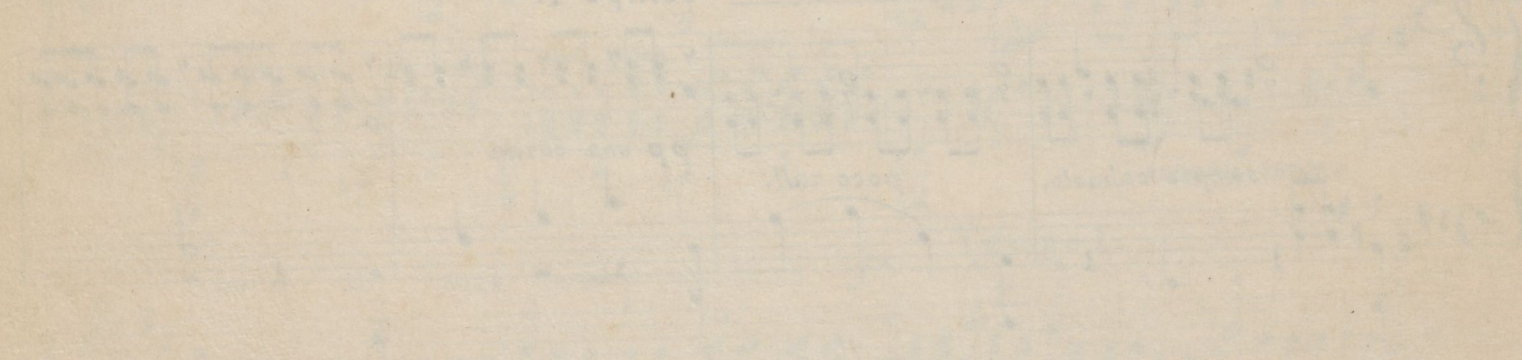
Ped. *

This system concludes the piece with a 'poco rall' (poco rallentando) instruction. The dynamics are 'pp' and 'PPP Fine.'. A 'monc. il basso.' (monocorde il basso) instruction is present. The system ends with a 'Ped.' (pedal) instruction and an asterisk.

Andante



Tempo I



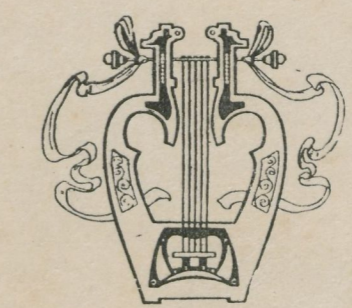
E. Heitmann

SIMPLE AVEU

ROMANCE SANS PAROLES

FRANÇOIS THOMÉ

OP. 25



EDITION G. PAUKAM TARTU

*Noodiari
O. KRUPP
Harju tänn. № 39, Tallinn.*