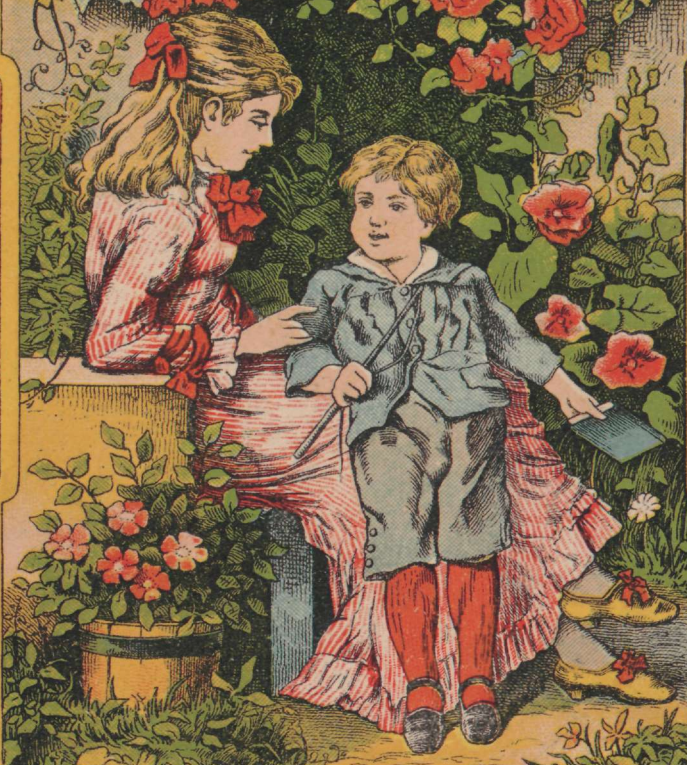


4 II 814.

029

Laste rõõm



354

10

Postmus

1. 8. Dez. 1913

ENSV TA
Kirjandusmuuse
Arhiivraamatukogu

Wäike tähestik. 37498

a b d e g h i j k l m n
o p r s t u w ä ö ü ô

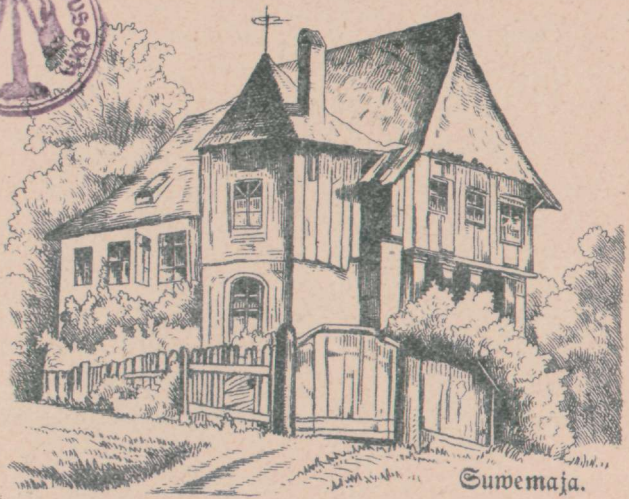
Suur tähestik.

A B D E G H I
K L M N
O P R S T U W
Ä Ö Ü Ô

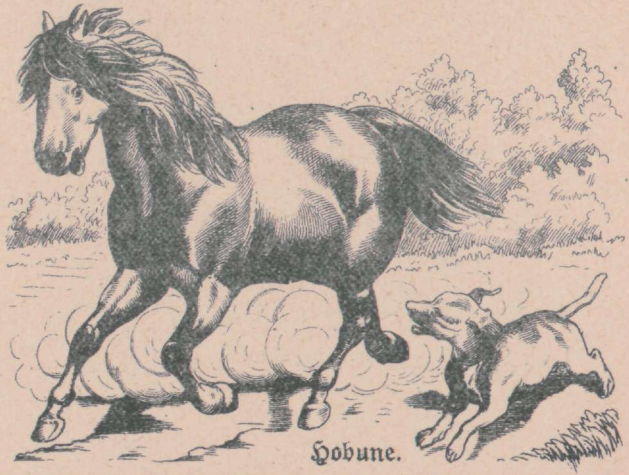
1 2 3 4 5 6 7 8 9 0



Di tere, tere tulemast,
mu juurde sisse astumast!
Mis tohin teile pakkuda?
Ma soovin sukrut tõega
ja peale jelle rosinaid —
jee kõik null' andke sedamaid!



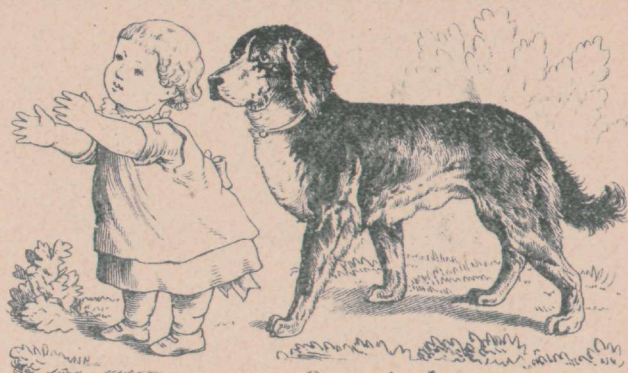
Sumemaja.



Hobune.



Mihkel mängib ja Linda laulab,
tore, nii tore on kuulata.
Ja see ilusa laulu pärast
jäävad väljas kõik kuulama.
Tõeste, laul on taeva anne,
taevataadi kaunis tanne!



Laps ja koer.



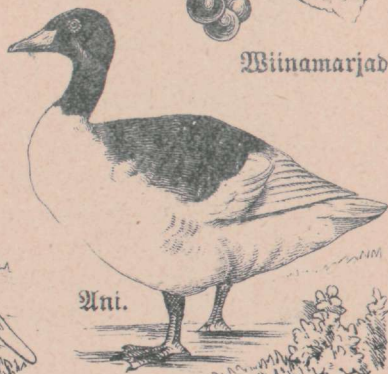
Pafun.



Viinamarjad.



Sõjamees.



Ani.

Retraja.



Pöörlija.



Huff.

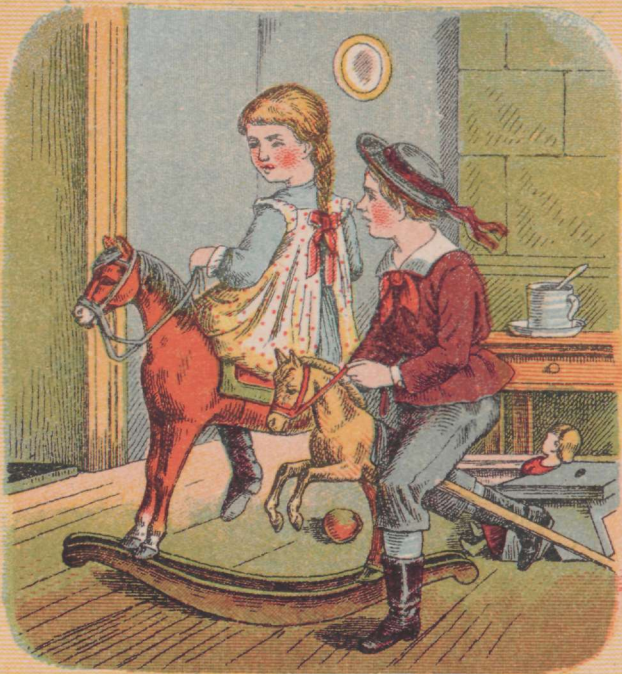
Rastja.



Räärid.



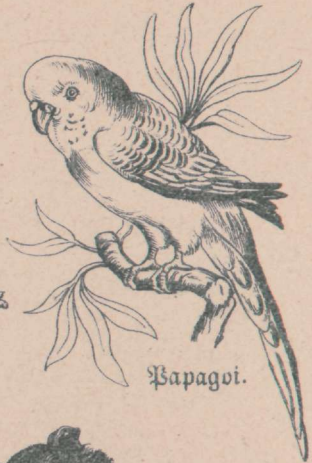
Õmbleja.



Suurte jakske eeskujul
ja ka nende uhkel tujul
näed siin paari ratsutamas,
poisfi-piigat patsutamas,
tuna nutuke peab wahti,
millal peaseb waewast lahti !



Draw.



Paragoi.



Tantsutaru.



See talleke on wäite weel
ja praegu wiibib eksiteel.
Mia pean teda juhtima,
et ema juurde jõuaks ta,
siis tema priskelt rohtu sööb,
ja haljal murul tepju lööb!

Üksford ühte pead ja
 ořawaste ořfama!

1	×	1	=	1
2	×	1	=	2
3	×	1	=	3
4	×	1	=	4
5	×	1	=	5
6	×	1	=	6
7	×	1	=	7
8	×	1	=	8
9	×	1	=	9
10	×	1	=	10

1	×	4	=	4
2	×	4	=	8
3	×	4	=	12
4	×	4	=	16
5	×	4	=	20
6	×	4	=	24
7	×	4	=	28
8	×	4	=	32
9	×	4	=	36
10	×	4	=	40

1	×	7	=	7
2	×	7	=	14
3	×	7	=	21
4	×	7	=	28
5	×	7	=	35
6	×	7	=	42
7	×	7	=	49
8	×	7	=	56
9	×	7	=	63
10	×	7	=	70

1	×	2	=	2
2	×	2	=	4
3	×	2	=	6
4	×	2	=	8
5	×	2	=	10
6	×	2	=	12
7	×	2	=	14
8	×	2	=	16
9	×	2	=	18
10	×	2	=	20

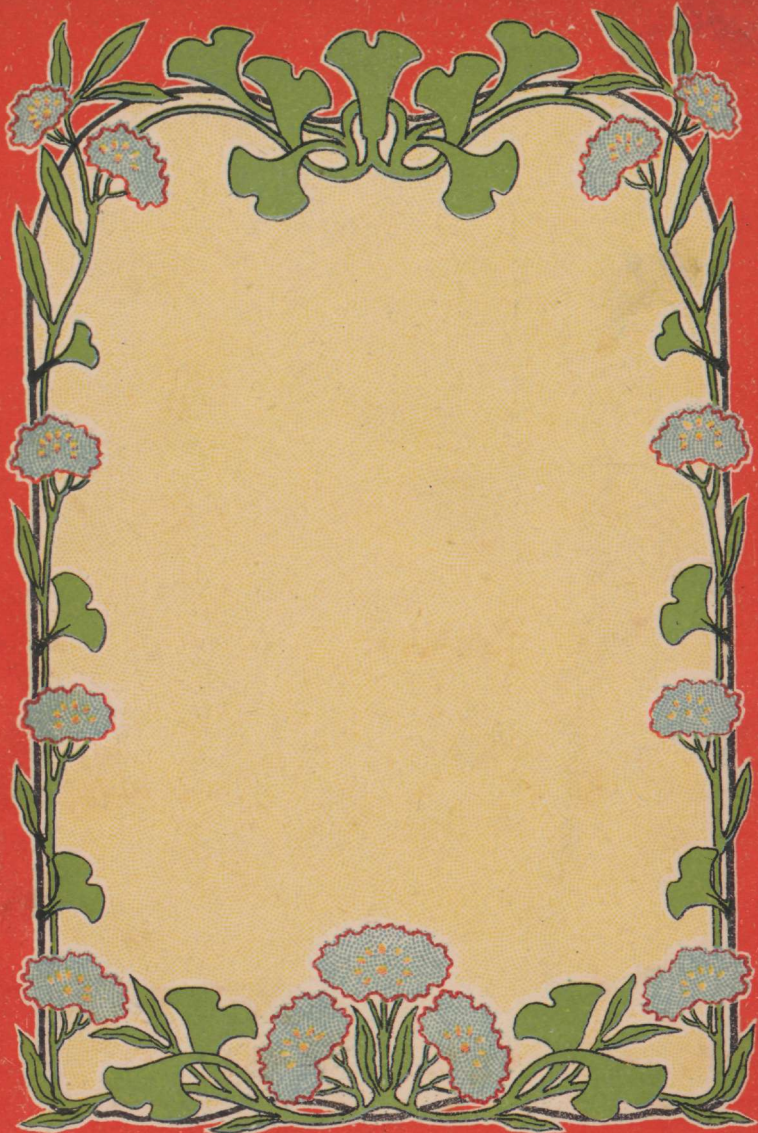
1	×	5	=	5
2	×	5	=	10
3	×	5	=	15
4	×	5	=	20
5	×	5	=	25
6	×	5	=	30
7	×	5	=	35
8	×	5	=	40
9	×	5	=	45
10	×	5	=	50

1	×	8	=	8
2	×	8	=	16
3	×	8	=	24
4	×	8	=	32
5	×	8	=	40
6	×	8	=	48
7	×	8	=	56
8	×	8	=	64
9	×	8	=	72
10	×	8	=	80

1	×	3	=	3
2	×	3	=	6
3	×	3	=	9
4	×	3	=	12
5	×	3	=	15
6	×	3	=	18
7	×	3	=	21
8	×	3	=	24
9	×	3	=	27
10	×	3	=	30

1	×	6	=	6
2	×	6	=	12
3	×	6	=	18
4	×	6	=	24
5	×	6	=	30
6	×	6	=	36
7	×	6	=	42
8	×	6	=	48
9	×	6	=	54
10	×	6	=	60

1	×	9	=	9
2	×	9	=	18
3	×	9	=	27
4	×	9	=	36
5	×	9	=	45
6	×	9	=	54
7	×	9	=	63
8	×	9	=	72
9	×	9	=	81
10	×	9	=	90



3. Steinkampi trüfikoda, Dultsburgis.